



2016 AT-PAC RINGLOCK
PRODUCT CATALOG

NORTH AMERICA

TABLE OF CONTENTS

INTRODUCTION	4
OVERVIEW	5
RINGLOCK QUALITY FACTORS	5
PRODUCT TRACEABILITY	6
RINGLOCK NODE CONNECTION	7
COMPONENT IDENTIFICATION	8
COLOR CODED COMPONENTS	9
RINGLOCK	10
BASE	
SCREWJACK/BASE JACK	10
SWIVELJACK	10
SOLID SCREWJACK FOR CASTER.....	10
CASTER 8" HD	10
CASTER 12".....	11
ADAPTER FOR 12" CASTER.....	11
STARTER/BASE COLLAR.....	11
STANDARD WITH BOLTED SPIGOT	12
LEDGERS	
LEDGER O-TYPE	13
TRUSS LEDGER O-TYPE	13
TRANSOMS	
MID TRANSOM O-TYPE	14
LEDGER TO PLANK TRANSOM O-TYPE	14
PLANK TO PLANK TRANSOM O-TYPE	14
BRACKETS	
SIDE/HOP-UP BRACKET O-TYPE	15
SIDE/CONSOLE BRACKET O-TYPE	15
BRACES	
BAY BRACE 6'-6" (2.0m) LIFT	16
SWIVEL CLAMP BRACE	16
GIRDERS	
LATTICE GIRDER, NO SPIGOT 19.7" (0.5m)	17
LATTICE GIRDER WITH SPIGOT 19.7" (0.5m)	17
SPIGOT ADAPTER CLAMP FOR GIRDERS	17
SPIGOT ADAPTER CLAMP (I-BOLT).....	18
WORK PLATFORMS	19
INTERLOCKING TOEBOARD	20
STEEL PLANK O-TYPE 9.5" (240mm)	20
INFILL PLANK.....	21
ACCESS & EGRESS	22
LADDER	23
LADDER BRACKET	23
STAIR STRINGER	23
STAIR TREAD	23
GUARDRAIL STANDARD/"CRAZY LEG"	24
ADJUSTABLE SWING GATE	24

TABLE OF CONTENTS

ACCESSORIES.....	25
ROSETTE CLAMP	26
DAVIT ARM.....	26
LEG LOCK (SUSPENDED SCAFFOLD).....	26
VERTICAL MID TRANSOM 19.7" (0.5m).....	26
ADAPTER CLAMPS	
SWIVEL ADAPTER CLAMP (I-BOLT).....	27
RIGHT ANGLE ADAPTER CLAMP (I-BOLT).....	27
SWIVEL ADAPTER CLAMP (WEDGE)	27
RIGHT ANGLE ADAPTER CLAMP (WEDGE)	27
PINS	
PIG TAIL PIN	28
TOGGLE PIN	28
OTHER	
SCAFFOLD RACK.....	28
SCAFFOLD CAGE INSERT	28
TUBE & CLAMP	29
CLAMPS	
RIGHT ANGLE CLAMP (I-BOLT)	30
RIGHT ANGLE CLAMP (WEDGE).....	30
SWIVEL CLAMP (I-BOLT).....	30
SWIVEL CLAMP (WEDGE).....	30
BEAM CLAMP FORGED (RIGID).....	31
BEAM CLAMP (SWIVEL)	31
JOINERS	
END TO END JOINER—EXTERNAL	31
END TO END JOINER—INTERNAL.....	31
TUBE & BEAM	
STEEL TUBE WITH FITTING.....	32
ALUMINUM TUBE.....	32
6.5" ALUMINUM BEAM.....	33
A-CLAMP	34
DISCLAIMER	35

INTRODUCTION

INTRODUCTION TO AT-PAC



Since 1995, AT-PAC has offered Complete Scaffolding Solutions to our strategic clients throughout the world, matching our expertise to the specific needs of our Customers. With our extensive experience in the industrial market, we specialize in Oil, Gas & Chemicals, Power & Energy and Mining & Refining projects. AT-PAC prides itself on building long term and sustainable relationships with both our customers and team members and distributes only the highest quality products by ensuring that our production process adheres to our rigorous quality assurance and quality control program.

AT-PAC has locations throughout the USA, Canada, UK, Australia and South America. We currently supply Asia-Pacific, Africa, the Middle East and beyond. Our unparalleled expertise and professionalism enables us to consistently deliver Complete Scaffolding Solutions. Our experienced customer driven team provides a seamless service from product development, supply chain management, production, quality control, delivery and local engineering support for fast, effective solutions where required.

AT-PAC Ringlock is a modular system scaffold which enables users to quickly and efficiently erect, use and dismantle temporary work structures. The AT-PAC Ringlock system conforms to ANSI/ OSHA Regulations, European, Chile and Australian standards.



OVERVIEW

RINGLOCK QUALITY FACTORS



All AT-PAC Ringlock products are engineered to meet the highest quality standards based on three simple factors:

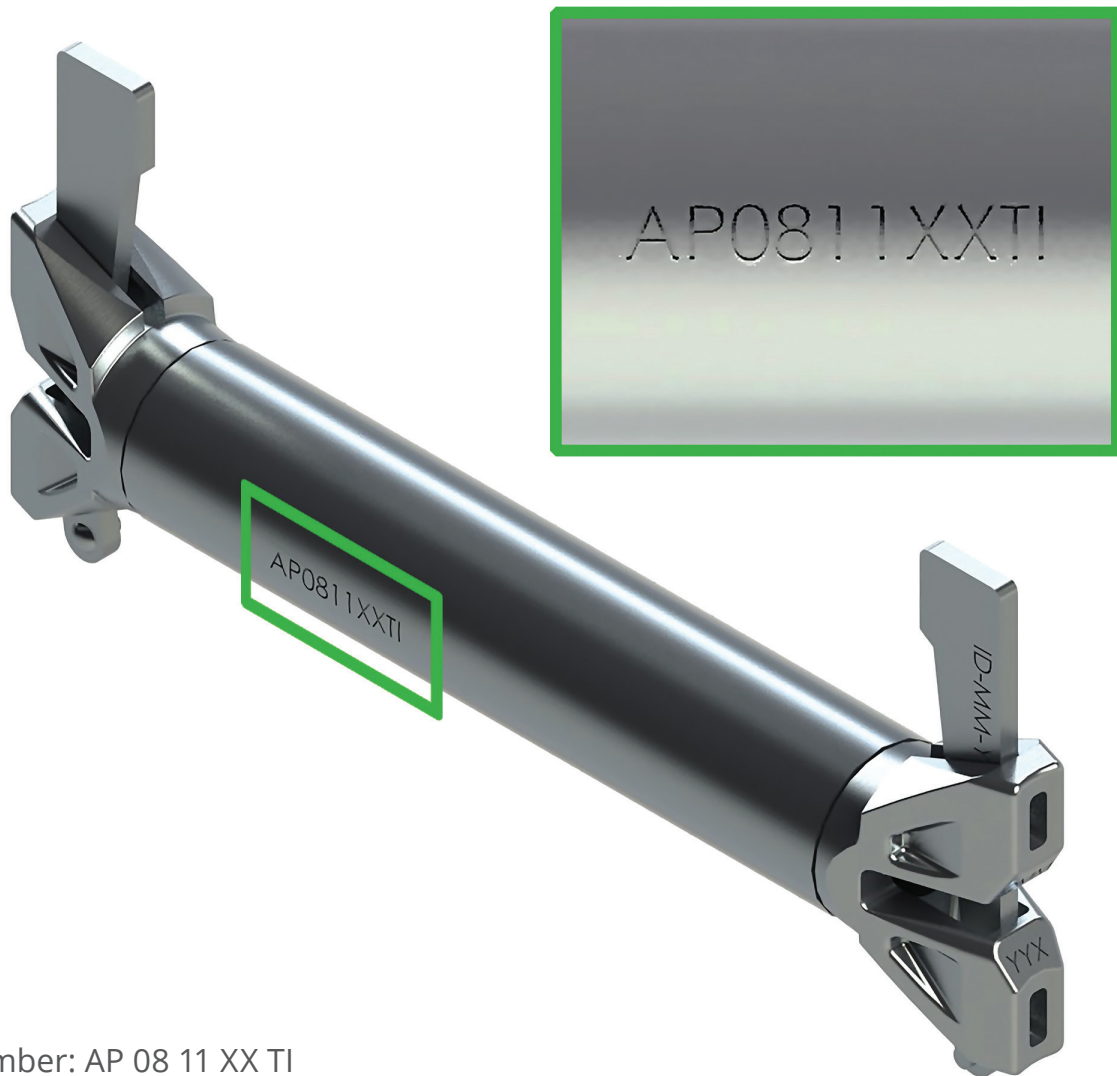
- MATERIAL*** We only use the highest quality steel in our products. Our steel is certified, tested and conforms to or exceeds industry standards no matter the location or climate.
- FIT*** AT-PAC products are engineered with versatility and usability in mind. Our modified product designs increase efficiencies and productivity, saving your projects time and money.
- FINISH*** Where applicable, our products are finished and protected by hot-dipped zinc galvanizing. This method of finishing maximizes the utilization and extends the product life.

For additional information on Ringlock system components please consult your local AT-PAC representative.

OVERVIEW

PRODUCT TRACEABILITY

All AT-PAC components are stamped with traceability marks.



Key

Batch Number: AP 08 11 XX TI

AP = AT-PAC

08 = Month of Manufacture

11 = Year of Manufacture

XX = Order Number

TI = Reference Number

OVERVIEW

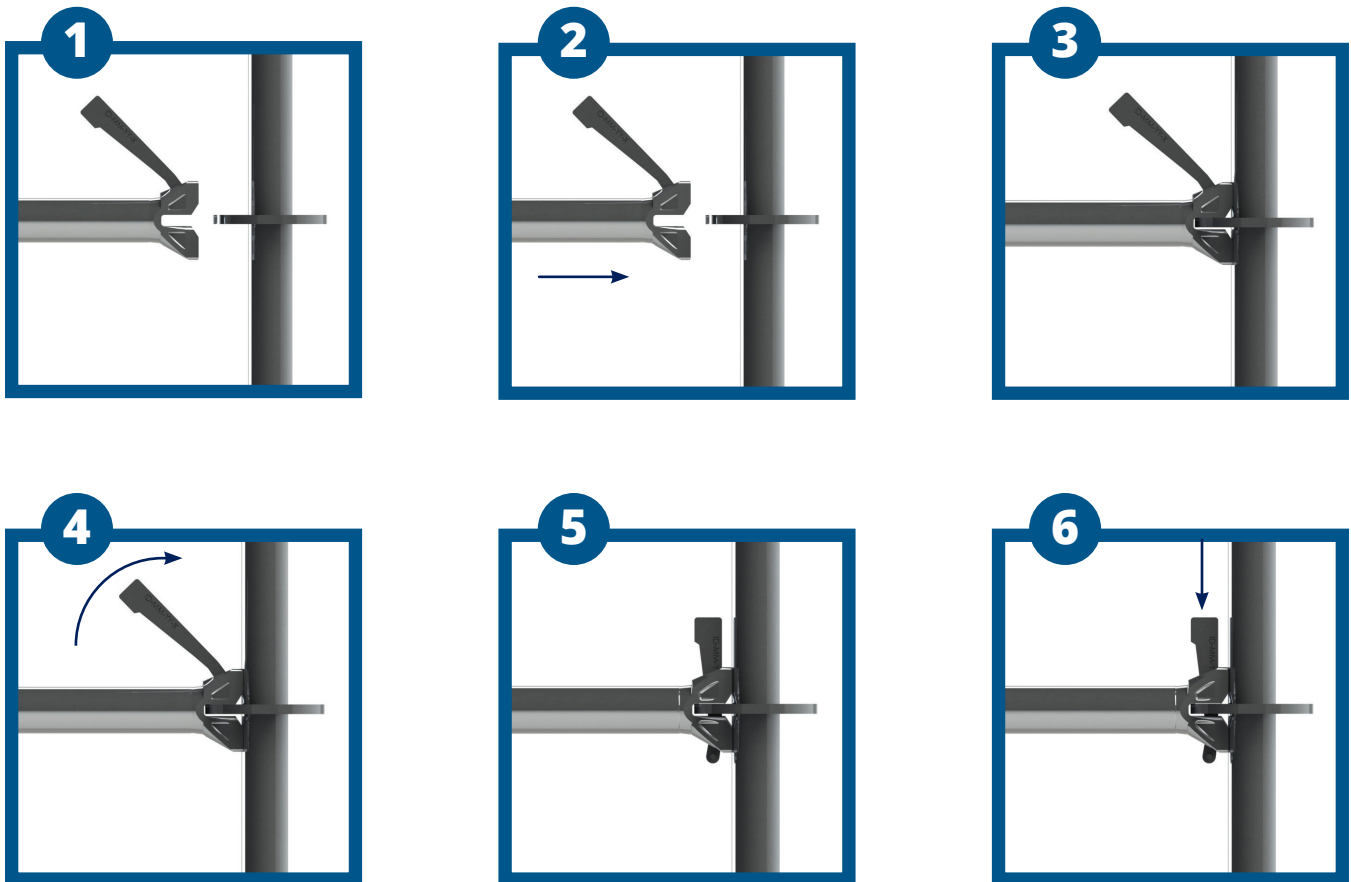
RINGLOCK NODE CONNECTION

Ringlock node connection consists of Standards with rosettes every 19.7" (0.5m) and horizontal members with a cast end captive wedge (Ledger and Transom). When connected together the Ledger ends and rosettes create a very strong connection. It is this connection that transmits forces throughout the scaffold structure.

The Ringlock rosette has a diameter of 5" (123mm) has been manufactured with 8 slots, 4 small and 4 large. The smaller slots represent the 90 degree angle at which Ledgers and Transoms are installed. The larger trapezoidal slots accommodate the Diagonal Bay Braces.

If the need arises, the Ledgers can be installed in the trapezoidal slots, allowing up to 15 degrees of rotation. This provides added flexibility to clear obstacles when necessary.

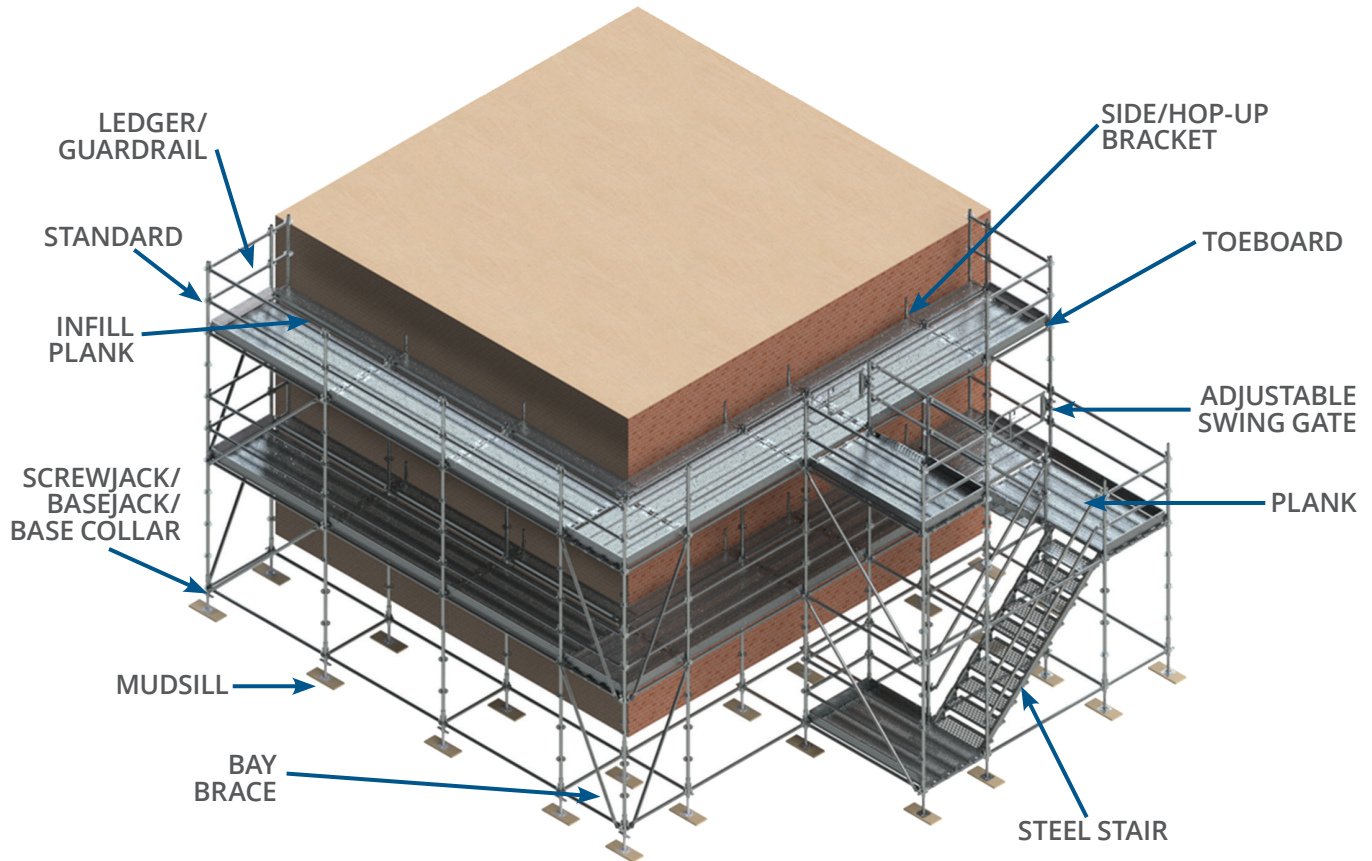
TO MAKE A CONNECTION



OVERVIEW

COMPONENT IDENTIFICATION

The following diagram represents the most common Ringlock components used. Most scaffold structures are made from these basic components yet the Ringlock system comes with a variety of accessories for all your scaffolding requirements.


















The above illustration shows an example of the Ringlock 10-Leg Stair Tower. AT-PAC also has the following alternate means of access and egress:

- Exterior Vertical Steel Ladders with Ladder Brackets used in conjunction with Swing Gates.
- Internal Vertical Steel Ladders used with Swing Gates, Plank-To-Plank Transoms, Ledger-to-Plank Transoms or Ladder Access Transoms.
- Aluminum Platform Stair units (custom orders only), used in conjunction with 4-leg Stair Tower.

OVERVIEW

COLOR CODED COMPONENTS

A new feature offered by AT-PAC, is the color coded horizontal component manufactured with a colored identification label. This process allows the scaffolder to easily match particular components for each size of bay to be erected. (For example: A Purple Ledger 3'-7" (1.09m) will work with a Purple Diagonal and a Purple Plank.)

.31m	COMPLETE SCAFFOLDING SOLUTIONS		1.21m	COMPLETE SCAFFOLDING SOLUTIONS	
1'	 AT-PAC		4'	 AT-PAC	
	WWW.AT-PAC.COM INFO@AT-PAC.COM			WWW.AT-PAC.COM INFO@AT-PAC.COM	
.61m	COMPLETE SCAFFOLDING SOLUTIONS		1.52m	COMPLETE SCAFFOLDING SOLUTIONS	
2'	 AT-PAC		5'	 AT-PAC	
	WWW.AT-PAC.COM INFO@AT-PAC.COM			WWW.AT-PAC.COM INFO@AT-PAC.COM	
.65m	COMPLETE SCAFFOLDING SOLUTIONS		1.57m	COMPLETE SCAFFOLDING SOLUTIONS	
2'2"	 AT-PAC		5'2"	 AT-PAC	
	WWW.AT-PAC.COM INFO@AT-PAC.COM			WWW.AT-PAC.COM INFO@AT-PAC.COM	
.88m	COMPLETE SCAFFOLDING SOLUTIONS		1.82m	COMPLETE SCAFFOLDING SOLUTIONS	
2'9"	 AT-PAC		6'	 AT-PAC	
	WWW.AT-PAC.COM INFO@AT-PAC.COM			WWW.AT-PAC.COM INFO@AT-PAC.COM	
.91m	COMPLETE SCAFFOLDING SOLUTIONS		2.13m	COMPLETE SCAFFOLDING SOLUTIONS	
3'	 AT-PAC		7'	 AT-PAC	
	WWW.AT-PAC.COM INFO@AT-PAC.COM			WWW.AT-PAC.COM INFO@AT-PAC.COM	
1.065m	COMPLETE SCAFFOLDING SOLUTIONS		2.43m	COMPLETE SCAFFOLDING SOLUTIONS	
3'6"	 AT-PAC		8'	 AT-PAC	
	WWW.AT-PAC.COM INFO@AT-PAC.COM			WWW.AT-PAC.COM INFO@AT-PAC.COM	
1.09m	COMPLETE SCAFFOLDING SOLUTIONS		3.05m	COMPLETE SCAFFOLDING SOLUTIONS	
3'7"	 AT-PAC		10'	 AT-PAC	
	WWW.AT-PAC.COM INFO@AT-PAC.COM			WWW.AT-PAC.COM INFO@AT-PAC.COM	
1.15m	COMPLETE SCAFFOLDING SOLUTIONS				
3'10"	 AT-PAC				
	WWW.AT-PAC.COM INFO@AT-PAC.COM				

RINGLOCK

Base

SCREWJACK/BASE JACK

The Screwjack is used as a starting base for a scaffold. It is adjustable in height to allow for compensation on uneven surfaces so that a level scaffold is always attainable.

SCREWJACK/BASE JACK

PRODUCT			HEIGHT		WEIGHT		PACKAGING	
CODE	REF. NO.	DESCRIPTION	METERS	FEET	KG	LB	QTY	TYPE
06.01.060.00	SBJ24	Screwjack/Base Jack	0.60	2'	3.87	8.53	220	Rack



SWIVELJACK

The Swiveljack is used as a starting base for a scaffold. It is adjustable in height and angle to allow for compensation on sloped surfaces where a Screwjack/Base Jack cannot be used.

SWIVELJACK

PRODUCT			HEIGHT		WEIGHT		PACKAGING	
CODE	REF. NO.	DESCRIPTION	METERS	FEET	KG	LB	QTY	TYPE
06.03.078.00	SSWBJ24	Swiveljack	0.78	2'-7"	6.02	13.27	160	Rack



SOLID SCREWJACK FOR CASTER

The Solid Screwjack for Caster is designed to be used in conjunction with 12" (0.3m) Caster and used as a starting base for a scaffold. It has an adjustable height to allow for compensation on uneven surfaces so that a level scaffold is always attainable.

SOLID SCREW JACK FOR CASTER

PRODUCT			HEIGHT		WEIGHT		PACKAGING	
CODE	REF. NO.	DESCRIPTION	METERS	FEET	KG	LB	QTY	TYPE
06.02.030.00	SBJ24C	Screwjack for Caster	0.69	2'-3"	8.44	18.60	220	Rack

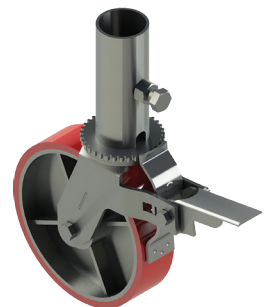


CASTER 8" HD

The Caster 8" (0.2m) HD is designed to provide mobility to a small to medium size scaffold tower allowing the tower to roll across a flat surface. The Ringlock Standard fits into the collar of the Caster and can be secured into place using the locking nut.

CASTER 8" (0.2m) HD

PRODUCT			DIAMETER		WEIGHT		PACKAGING	
CODE	REF. NO.	DESCRIPTION	METERS	FEET	KG	LB	QTY	TYPE
07.01.020.00	SSCW	Caster 8" HD	0.20	8"	6.00	13.23	220	Rack



RINGLOCK

Base

CASTER 12"

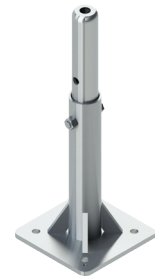
The Caster 12" (0.3m) is designed to provide mobility to a medium to large size scaffold tower allowing the tower to roll across a flat surface. The Adapter/ Solid Screw Jack can be fixed to the top of the Caster using Bolt and Nut fixtures. This allows for the Ringlock Standard to attach directly to the Adapter/Caster combination.



CASTER 12" (0.3m)								
PRODUCT			DIAMETER		WEIGHT		PACKAGING	
CODE	REF. NO.	DESCRIPTION	METERS	FEET	KG	LB	QTY	TYPE
07.02.030.00	SSCW	Caster 12"	0.30	12"	16.01	35.29	220	Rack

ADAPTER FOR 12" CASTER

The Adapter for 12" (0.3m) Caster is used as a base connection point to a 12" Caster and provides a base spigot to use with Standards or Base Collars to begin scaffold construction.



ADAPTER FOR 12" (0.3m) CASTER								
PRODUCT			HEIGHT		WEIGHT		PACKAGING	
CODE	REF. NO.	DESCRIPTION	METERS	FEET	KG	LB	QTY	TYPE
01.33.030.00	RSLC12ADT	Adapter for 12" Caster	0.249	9.75"	4.24	9.35	144	Rack + Insert

STARTER/BASE COLLAR

The Base Collar is the beginning of the Ringlock Scaffolding system. It sits upon a fixed or Adjustable Base.



STARTER/BASE COLLAR								
PRODUCT			HEIGHT		WEIGHT		PACKAGING	
CODE	REF. NO.	DESCRIPTION	METERS	FEET	KG	LB	QTY	TYPE
01.27.000.00	RSBC	Starter/Base Collar	0.301	11.75"	2.43	5.36	385	Rack

RINGLOCK

Base

STANDARD WITH BOLTED SPIGOT

The Standard with Bolted Spigot is the vertical member of the Ringlock scaffolding system that utilizes a removable spigot. The rosettes are located at fixed increments of 19.7" (0.5m) for attaching horizontal Ledgers and Diagonal Braces. The Standard provides the vertical support for the scaffold system.



STANDARD WITH BOLTED SPIGOT

PRODUCT			HEIGHT		WEIGHT		PACKAGING	
CODE	REF. NO.	DESCRIPTION	METERS	FEET	KG	LB	QTY	TYPE
01.34.050.00	RSSNS050	Standard (1 Ring)	0.5	1'-8"	3.46	7.63	270	Rack
01.34.100.00	RSSNS100	Standard (2 Ring)	1.0	3'-3"	5.76	12.70	180	Rack
01.34.150.00	RSSNS150	Standard (3 Ring)	1.5	4'-11"	8.08	17.81	90	Rack
01.34.200.00	RSSNS200	Standard (4 Ring)	2.0	6'-6"	10.29	22.68	90	Rack
01.34.250.00	RSSNS250	Standard (5 Ring)	2.5	8'-2"	12.42	27.38	90	Rack
01.34.300.00	RSSNS300	Standard (6 Ring)	3.0	9'-9"	14.93	32.92	90	Rack

RINGLOCK

Ledgers

LEDGER O-TYPE

The Ledger is the horizontal member of Ringlock scaffolding. Shorter Ledgers are used as horizontal support for Ringlock Planks. Ledgers can also be used as mid rail and top or hand guard rails.

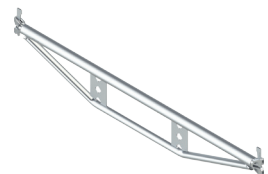
LEDGER O-TYPE								
PRODUCTS			LENGTH		WEIGHT		PACKAGING	
CODE	REF. NO.	DESCRIPTION	METERS	FEET	KG	LB	QTY	TYPE
01.03.015.00	RSL015	Ledger O-Type	0.15	6"	1.17	2.58	300	Rack
01.03.031.00	RSL031	Ledger O-Type	0.31	1'	0.31	1.77	300	Rack
01.03.061.00	RSL061	Ledger O-Type	0.61	2'-0"	2.96	6.52	300	Rack
01.03.065.00	RSL065	Ledger O-Type	0.65	2'-2"	3.07	6.77	300	Rack
01.03.088.00	RSL088	Ledger O-Type	0.88	2'-10 ⁵ / ₈ "	4.00	8.81	300	Rack
01.03.091.00	RSL091	Ledger O-Type	0.91	3'-0"	4.14	9.13	200	Rack
01.03.106.00	RSL106	Ledger O-Type	1.065	3'-6"	4.59	10.11	200	Rack
01.03.109.00	RSL109	Ledger O-Type	1.09	3'-7"	4.70	10.36	200	Rack
01.03.115.00	RSL115	Ledger O-Type	1.15	3'-10"	4.86	10.71	200	Rack
01.03.121.00	RSL121	Ledger O-Type	1.21	4'	5.09	11.22	150	Rack
01.03.152.00	RSL152	Ledger O-Type	1.52	5'-0"	6.16	13.58	150	Rack
01.03.157.00	RSL157	Ledger O-Type	1.57	5'-2"	6.45	14.21	150	Rack
01.03.182.00	RSL182	Ledger O-Type	1.82	6'-0"	7.25	15.98	150	Rack
01.03.213.00	RSL213	Ledger O-Type	2.13	7'-0"	8.40	18.52	150	Rack
01.03.243.00	RSL243	Ledger O-Type	2.43	8'-0"	9.52	20.99	150	Rack
01.03.305.00	RSL305	Ledger O-Type	3.05	10'	11.59	25.55	150	Rack



TRUSS LEDGER O-TYPE

The Truss Ledger is engineered to enable higher service loads to the working platform. The reinforcing tube and stiffener plates support the top tube, providing additional strength.

TRUSS LEDGER O-TYPE								
PRODUCT			LENGTH		WEIGHT		PACKAGING	
CODE	REF. NO.	DESCRIPTION	METERS	FEET	KG	LB	QTY	TYPE
01.18.157.00	RSTL157	Truss Ledger O-Type	1.57	5'-2"	10.10	22.26	63	Rack
01.18.182.00	RSTL182	Truss Ledger O-Type	1.82	6'-0"	12.51	27.57	63	Rack
01.18.213.00	RSTL213	Truss Ledger O-Type	2.13	7'-0"	14.33	31.59	63	Rack
01.18.243.00	RSTL243	Truss Ledger O-Type	2.43	8'-0"	16.68	36.77	63	Rack
01.18.305.00	RSTL305	Truss Ledger O-Type	3.05	10'-0"	21.12	46.56	63	Rack



RINGLOCK

Transoms

MID TRANSOM O-TYPE

The Mid Transom is designed to create a transom at the plank level anywhere inside of a bay by straddling the outer Ledgers/ Transoms of a bay. Mid Transoms can also be used to create openings within the planked bay for Ladder access or to avoid a permanent obstruction.

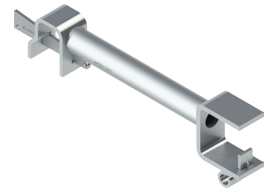
MID TRANSOM O-TYPE									
PRODUCT			LENGTH		WEIGHT		PACKAGING		
CODE	REF. NO.	DESCRIPTION	METERS	FEET	KG	LB	QTY	TYPE	
01.20.106.00	RSMT1065	Mid Transom	1.065	3'-6"	5.09	11.22	160	Rack	
01.20.115.00	RSMT115	Mid Transom	1.15	3'-10"	5.45	12.01	160	Rack	
01.20.157.00	RSMT157	Mid Transom	1.57	5'-2"	6.81	15.01	160	Rack	
01.20.182.00	RSMT182	Mid Transom	1.82	6'-0"	7.80	17.19	160	Rack	
01.20.213.00	RSMT213	Mid Transom	2.13	7'-0"	9.08	20.01	160	Rack	
01.20.243.00	RSMT243	Mid Transom	2.43	8'-0"	10.10	22.26	160	Rack	
01.20.305.00	RSMT305	Mid Transom	3.05	10'-0"	12.45	27.44	160	Rack	



LEDGER TO PLANK TRANSOM O-TYPE

The Ledger to Plank Transom is used where ladder access opening is required on one side of the access platform, or where a gap in the platform is needed to accommodate a column or pipe.

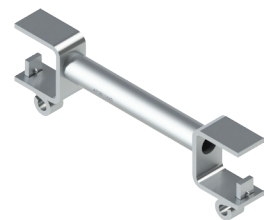
LEDGER TO PLANK TRANSOM									
PRODUCT			LENGTH		WEIGHT		PACKAGING		
CODE	REF. NO.	DESCRIPTION	METERS	FEET	KG	LB	QTY	TYPE	
01.23.240.00	RSLPT240	Ledger to Plank—1 Plank	0.240	10"	3.38	7.45	200	Rack + Insert	
01.23.480.00	RSLPT480	Ledger to Plank—2 Plank	0.480	1'-7"	4.23	9.32	200	Rack	
01.23.720.00	RSLPT720	Ledger to Plank—3 Plank	0.720	2'-4"	5.07	11.17	200	Rack	



PLANK TO PLANK TRANSOM O-TYPE

The Plank to Plank Transom is used when an opening is required in the middle of a platform. For example, a column or pipework that may pass through the working platform.

PLANK TO PLANK TRANSOM									
PRODUCT			LENGTH		WEIGHT		PACKAGING		
CODE	REF. NO.	DESCRIPTION	METERS	FEET	KG	LB	QTY	TYPE	
01.24.240.00	RSPPT240	Plank to Plank—1 Plank	0.240	10"	3.67	8.09	170	Rack + Insert	
01.24.480.00	RSPPT480	Plank to Plank—2 Plank	0.480	1'-7"	4.55	10.03	200	Rack	
01.24.720.00	RSPPT720	Plank to Plank—3 Plank	0.720	2'-4"	5.47	12.05	200	Rack	



RINGLOCK

Brackets

SIDE/HOP-UP BRACKET O-TYPE

The Side/Hop-Up Bracket is used to extend the working platform closer to the building structure in cases where the main scaffold cannot be erected directly next to the working face.

SIDE/HOP-UP BRACKET O-TYPE									
PRODUCT			WIDTH		WEIGHT		PACKAGING		
CODE	REF. NO.	DESCRIPTION	METERS	FEET	KG	LB	QTY	TYPE	
01.11.031.00	RSSB031	Side Bracket 1 Board	0.31	1'	4.55	10.03	110	Rack + Insert	
01.11.065.00	RSSB065	Side Bracket 2 Board	0.65	2'-2"	7.20	15.87	66	Rack	
01.11.088.00	RSSB088	Side Bracket 3 Board	0.88	2'-10 ⁵ / ₈ "	8.46	18.65	50	Rack	



SIDE/CONSOLE BRACKET O-TYPE

The Side/Console Bracket is used at the edge of a scaffold to extend or widen the working platform.

SIDE/CONSOLE BRACKET O-TYPE									
PRODUCT			WIDTH		WEIGHT		PACKAGING		
CODE	REF. NO.	DESCRIPTION	METERS	FEET	KG	LB	QTY	TYPE	
01.12.106.00	RSCB106	Side/Console Bracket O-Type	1.065	3'-6"	12.55	27.66	24	Rack	
01.12.115.00	RSCB115	Side/Console Bracket O-Type	1.15	3'-10"	12.82	28.26	24	Rack	



RINGLOCK

Braces

BAY BRACE 6'-6" (2.0m) LIFT

The Bay Brace is used for the lateral bracing of Ringlock scaffolds. It can also be used as compression and tension members for cantilevers/spurs, transmitting loads back into the main scaffold structure. Bay Braces are used as obtuse angle mid rail and top or hand guard rails in conjunction with AT-PAC's Stair Stringer and Tread combination.

BAY BRACE FOR 6'-6" (2.0m) LIFT HEIGHT

PRODUCT			BAY LENGTH		WEIGHT		PACKAGING	
CODE	REF. NO.	DESCRIPTION	METERS	FEET	KG	LB	QTY	TYPE
01.06.088.00	RSBB20-088	Bay Brace	0.88	2'-10 ⁵ / ₈ "	7.65	16.86	150	Rack
01.06.091.00	RSBB20-091	Bay Brace	0.91	3'-0"	7.69	16.95	150	Rack
01.06.106.00	RSBB20-106	Bay Brace	1.065	3'-6"	7.84	17.28	150	Rack
01.06.109.00	RSBB20-109	Bay Brace	1.09	3'-7"	7.86	17.32	150	Rack
01.06.115.00	RSBB20-115	Bay Brace	1.15	3'-10"	7.94	17.50	150	Rack
01.06.121.00	RSBB20-121	Bay Brace	1.21	4'-0"	8.03	17.70	150	Rack
01.06.152.00	RSBB20-152	Bay Brace	1.52	5'-0"	8.46	18.65	150	Rack
01.06.157.00	RSBB20-157	Bay Brace	1.57	5'-2"	8.54	18.82	150	Rack
01.06.182.00	RSBB20-182	Bay Brace	1.82	6'-0"	8.97	19.77	150	Rack
01.06.213.00	RSBB20-213	Bay Brace	2.13	7'-0"	9.52	20.98	150	Rack
01.06.243.00	RSBB20-243	Bay Brace	2.43	8'-0"	10.14	22.35	150	Rack
01.06.305.00	RSBB20-305	Bay Brace	3.05	10'-0"	11.48	25.31	150	Rack



SWIVEL CLAMP BRACE

The Swivel Clamp Brace is used for the lateral bracing of modular scaffolding. It can also be used as obtuse angle mid rail and top or hand/guard rails in conjunction with AT-PAC's Steel Stair System. Swivel Clamp Braces give more versatility to attach the brace to any location on the vertical member of the scaffold. This item should NOT be used for cantilevers/spurring.

SWIVEL CLAMP BRACE

PRODUCT			BAY LENGTH		WEIGHT		PACKAGING	
CODE	REF. NO.	DESCRIPTION	METERS	FEET	KG	LB	QTY	TYPE
01.09.005.10	RSACB05-22	Swivel Clamp Brace 5'	1.52	5'	7.19	15.85	150	Rack
01.09.007.10	RSACB07-22	Swivel Clamp Brace 7'	2.13	7'	9.64	21.25	150	Rack
01.09.008.10	RSACB08-22	Swivel Clamp Brace 8'	2.43	8'	10.38	22.88	150	Rack
01.09.010.10	RSACB10-22	Swivel Clamp Brace 10'	3.04	10'	11.61	25.59	150	Rack



***Product Available in a Nut Size of 21mm (UK), 22mm (N. America) and 23mm (AUS)*

RINGLOCK

Girders & Spigot Adapter Clamps

LATTICE GIRDER, NO SPIGOT 19.7" (0.5m)

The Lattice Girder is a horizontal member of Ringlock scaffolding that allows for bridging over large spans of 14'-28' (4.26m to 8.52m).

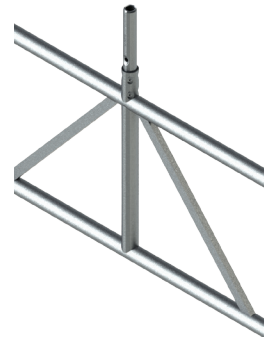
LATTICE GIRDER, NO SPIGOT 19.7" (0.5m)								
PRODUCT			LENGTH		WEIGHT		PACKAGING	
CODE	REF. NO.	DESCRIPTION	METERS	FEET	KG	LB	QTY	TYPE
01.16.426.00	RSLG426	Lattice Girder, No Spigot 500mm	4.26	14'	47.09	103.81	20	Bundle
01.16.517.00	RSLG517	Lattice Girder, No Spigot 500mm	5.17	17'	55.42	122.18	20	Bundle
01.16.639.00	RSLG639	Lattice Girder, No Spigot 500mm	6.39	21'	68.62	151.28	20	Bundle
01.16.852.00	RSLG852	Lattice Girder, No Spigot 500mm	8.52	28'	92.87	204.74	20	Bundle



LATTICE GIRDER WITH SPIGOT 19.7" (0.5m)

The Lattice Girder with Spigot is a horizontal member of Ringlock scaffolding that allows for bridging over large spans of 14'-28' (4.26m to 8.52m) with spigots located along the top chord to allow for Standards to be installed.

LATTICE GIRDER WITH SPIGOT								
PRODUCT			LENGTH		WEIGHT		PACKAGING	
CODE	REF. NO.	DESCRIPTION	METERS	FEET	KG	LB	QTY	TYPE
01.17.426.00	RSLG426	Lattice Girder w/Spigot	4.26	14'	49.10	108.02	15	BUNDLE
01.17.517.00	RSLG517	Lattice Girder w/Spigot	5.17	17'	64.30	141.46	15	BUNDLE
01.17.639.00	RSLG639	Lattice Girder w/Spigot	6.39	21'	70.95	156.09	15	BUNDLE
01.17.852.00	RSLG852	Lattice Girder w/Spigot	8.52	28'	93.00	204.60	15	BUNDLE



SPIGOT ADAPTER CLAMP FOR GIRDERS

The Spigot Adapter Clamp allows the connection of Ringlock Standards at intermediate locations along the length of Lattice Girders without spigots.

LATTICE GIRDER SPIGOT ADAPTER CLAMP						
PRODUCT				WEIGHT		PACKAGING
CODE	REF. NO.	DESCRIPTION	KG	LB	QTY	TYPE
05.08.200.10	RSLGSAC-22	Spigot Adapt.. Clamp for Girders	3.45	7.60	650	Rack + Insert

***Product Available in a Nut Size of 21mm (UK), 22mm (7/8" N. America) and 23mm (AUS)*



RINGLOCK

Spigot Adapter Clamps

SPIGOT ADAPTER CLAMP (I-BOLT)

The Spigot Adapter Clamp (I-Bolt) allows the connection of Ringlock Standards at intermediate locations along the length of O-Type Ledgers, Truss Ledgers and Girders.

SPIGOT ADAPTER CLAMP (I-BOLT)

PRODUCT			WEIGHT		PACKAGING	
CODE	REF. NO	DESCRIPTION	KG	LB	QTY	TYPE
05.03.200.10	RCSAC-22	Spigot Adapter Clamp	1.86	4.10	650	Rack + Insert

***Product Available in a Nut Size of 21mm (UK), 22mm (7/8" N. America) and 23mm (AUS)*



SPIGOT ADAPTER CLAMP (WEDGE)

The Spigot Adapter Clamp (Wedge) allows the connection of Ringlock Standards at intermediate locations along the length of O-Type Ledgers, Truss Ledgers and Girders.

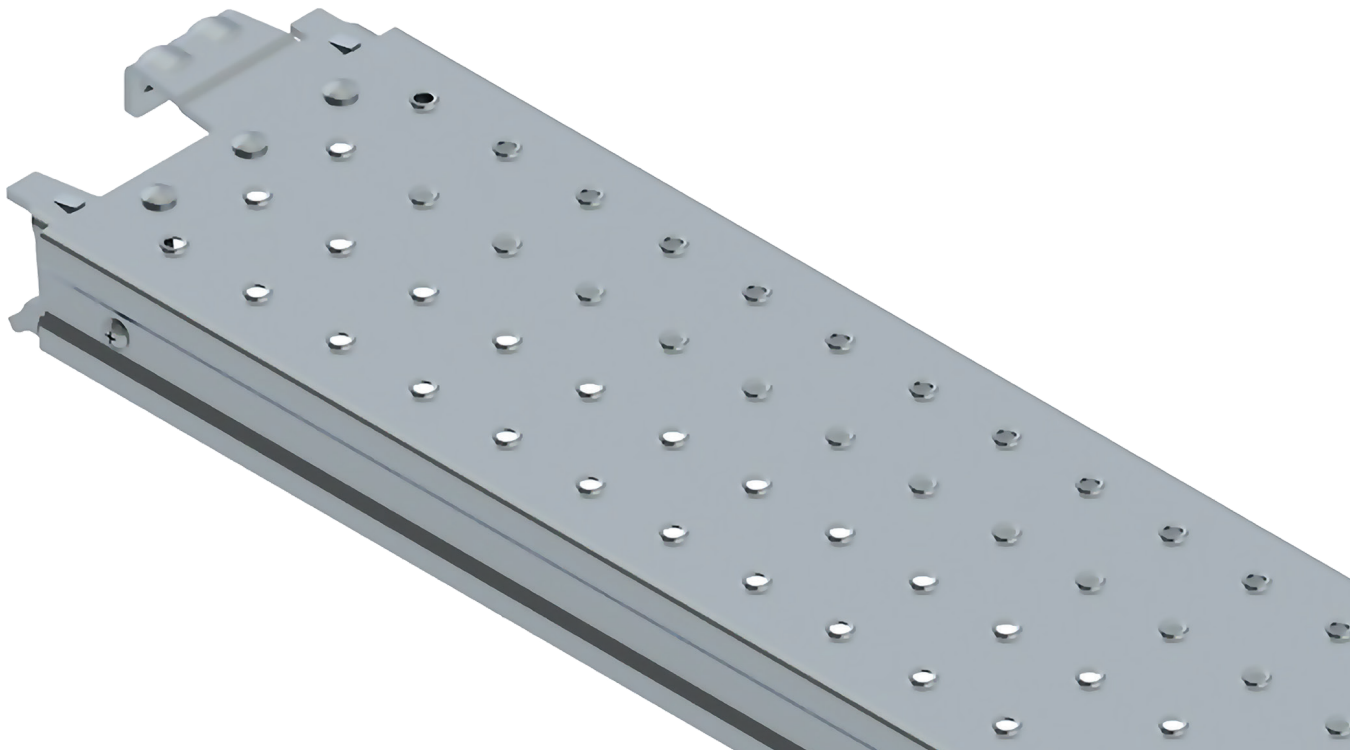
SPIGOT ADAPTER CLAMP (WEDGE)

PRODUCT			WEIGHT		PACKAGING	
CODE	REF. NO	DESCRIPTION	KG	LB	QTY	TYPE
05.06.200.20	TCSACW	Spigot Adapter Clamp	1.95	4.29	500	Rack + Insert



WORK PLATFORMS

Introduction



WORK PLATFORMS

AT-PAC provides a wide range of Work Platform products. These include modular Steel Planks, Wood Planks, Aluminum & Plywood Decks, Aluminum Pic-Boards, Aluminum Beams for decking and All-Aluminum Planks. All of these are designed for use with AT-PAC Ringlock, Tube & Clamp and Frame scaffold product lines.

AT-PAC can assist customers in deciding which work platform solution would be best suited for the applications at hand and the type of scaffolding being used.

Customers and users can rest assured that, no matter which product they choose, all AT-PAC work platform products are manufactured to stringent quality specifications and go through rigorous testing and checking before being shipped.

AT-PAC work platforms provide a strong, safe working surface no matter what the application and are available in a variety of lengths.

AT-PAC backs its products with its proprietary Quality Assurance System. This program is designed to ensure that each and every AT-PAC work platform product has been manufactured correctly and functions and performs as intended. This involves continual factory auditing, monitoring, testing, in-process inspections and pre-shipment inspections.

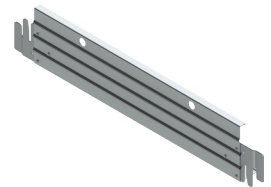
WORK PLATFORMS

Toeboards & Planks

INTERLOCKING TOEBOARD

The Interlocking Toeboard is designed to enclose the bay at the plank level, preventing small tools, debris and other items from falling off the planked platform.

INTERLOCKING TOEBOARD								
PRODUCT			LENGTH		WEIGHT		PACKAGING	
CODE	REF. NO.	DESCRIPTION	METERS	FEET	KG	LB	QTY	TYPE
08.08.065.00	SSTBL065	Interlocking Toeboard	0.65	2'-2"	2.11	4.65	460	Rack
08.08.088.00	SSTBL088	Interlocking Toeboard	0.88	2'10-5/8"	2.80	6.17	400	Rack
08.08.091.00	SSTBL091	Interlocking Toeboard	0.91	3'-0"	2.92	6.43	400	Rack
08.08.106.00	SSTBL106	Interlocking Toeboard	1.065	3'-6"	3.30	7.27	230	Rack
08.08.109.00	SSTBL109	Interlocking Toeboard	1.09	3'-7"	3.39	7.47	230	Rack
08.08.115.00	SSTBL115	Interlocking Toeboard	1.15	3'-10"	3.60	7.93	230	Rack
08.08.152.00	SSTBL152	Interlocking Toeboard	1.52	5'-0"	4.59	10.11	230	Rack
08.08.157.00	SSTBL157	Interlocking Toeboard	1.57	5'-2"	4.75	10.47	230	Rack
08.08.182.00	SSTBL182	Interlocking Toeboard	1.82	6'-0"	5.50	12.12	230	Rack
08.08.213.00	SSTBL213	Interlocking Toeboard	2.13	7'-0"	6.33	13.95	230	Rack
08.08.243.00	SSTBL243	Interlocking Toeboard	2.43	8'-0"	7.19	15.85	230	Rack
08.08.305.00	SSTBL305	Interlocking Toeboard	3.05	10'-0"	8.93	19.68	230	Rack



STEEL PLANK O-TYPE 9.5" (240mm)

The Steel Plank is used to form the working platform. The number of Steel Planks used determines the width of the platform. They span the length of the bay and hook onto the supporting Ledger/Transom. There is an anti-lift system to prevent uplift in adverse weather conditions.

STEEL PLANK O-TYPE 9.5" (240mm)								
PRODUCT			LENGTH		WEIGHT		PACKAGING	
CODE	REF. NO.	DESCRIPTION	METERS	FEET	KG	LB	QTY	TYPE
08.02.088.00	RSSP088	Steel Plank O-Type	0.88	2'-9"	7.01	15.45	100	Rack
08.02.091.00	RSSP091	Steel Plank O-Type	0.91	3'-0"	7.20	15.87	100	Rack
08.02.106.00	RSSP106	Steel Plank O-Type	1.065	3'-6"	8.15	17.96	50	Rack
08.02.115.00	RSSP115	Steel Plank O-Type	1.15	3'-10"	8.63	19.02	50	Rack
08.02.121.00	RSSP121	Steel Plank O-Type	1.21	4'-0"	9.11	20.08	50	Rack
08.02.152.00	RSSP152	Steel Plank O-Type	1.52	5'-0"	10.86	23.94	50	Rack
08.02.157.00	RSSP157	Steel Plank O-Type	1.57	5'-2"	10.98	24.20	50	Rack
08.02.182.00	RSSP182	Steel Plank O-Type	1.82	6'-0"	12.48	27.51	50	Rack
08.02.213.00	RSSP213	Steel Plank O-Type	2.13	7'-0"	14.33	31.59	50	Rack
08.02.243.00	RSSP243	Steel Plank O-Type	2.43	8'-0"	15.98	35.22	50	Rack
08.02.305.00	RSSP305	Steel Plank O-Type	3.05	10'-0"	19.57	43.14	50	Rack



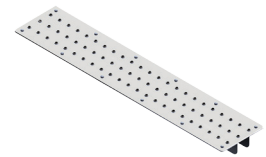
WORK PLATFORMS

Planks

INFILL PLANK

The Infill Plank is designed to fill any unwanted gaps between planks or bays providing a continuous working platform and to prevent small tools, debris and other items falling from the working platform.

INFILL PLANK									
PRODUCTS			LENGTH		WEIGHT		PACKAGING		
CODE	REF. NO.	DESCRIPTION	METERS	FEET	KG	LB	QTY	TYPE	
08.07.088.00	SIFP088	Infill Plank	0.88	2'-10 $\frac{5}{8}$ "	3.45	7.60	270	Rack	
08.07.106.00	SIFP106	Infill Plank	1.065	3'-6"	4.31	9.50	135	Rack	
08.07.115.00	SIFP115	Infill Plank	1.15	3'-10"	4.82	10.62	135	Rack	
08.07.157.00	SIFP157	Infill Plank	1.57	5'-2"	6.59	14.52	135	Rack	
08.07.182.00	SIFP182	Infill Plank	1.82	6'-0"	7.89	17.39	135	Rack	
08.07.213.00	SIFP213	Infill Plank	2.13	7'-0"	9.19	20.26	135	Rack	
08.07.243.00	SIFP243	Infill Plank	2.43	8'-0"	10.43	22.99	135	Rack	
08.07.305.00	SIFP305	Infill Plank	3.05	10'-0"	13.29	29.29	135	Rack	



ACCESS & EGRESS

Introduction



ACCESS & EGRESS

AT-PAC has developed a full complement of Access & Egress products for AT-PAC Ringlock and other applications. These products are designed and manufactured in accordance with all applicable standards and provide a level of safety that is unparalleled in the industry. This range of Products includes self-closing Swing Gates, Vertical Ladders, Aluminum Platforms Stair, Ringlock Steel Stairs and Aluminum Ladders. All products are built to exacting quality standards and individually checked for compliance and function.

The stairs are made from separate steel stringers and treads so the system can be installed where access is tight, such as in boilers or complex refinery installations where pipes and other obstructions prevent large pieces of scaffolding to be used.

The landings are constructed from AT-PAC Steel Planks which provide a convenient and anti-slip platform. AT-PAC Ringlock Bay Braces are used as handrails for the stairs.

AT-PAC also offers its clients their newly designed aluminum platform stair units. These are complete stair units with built-in landings. The use of lightweight structural aluminum for the stair stringers, treads and landings make these units highly manageable and easy to install. They also allow the stair towers to have only 4 legs on plan, making the system very fast and easy to erect.

ACCESS & EGRESS

Ladder & Stair

LADDER

The Vertical Ladder is designed to attach (using Ladder Brackets) on the inside or outside of a scaffold to provide safe access to the various deck levels.

LADDER								
PRODUCT			HEIGHT		WEIGHT		PACKAGING	
CODE	REF. NO.	DESCRIPTION	METERS	FEET	KG	LB	QTY	TYPE
11.01.003.00	RSAL03	Ladder	0.91	3'	6.53	14.39	25	Bundle
11.01.005.00	RSAL05	Ladder	1.52	5'	10.22	22.53	25	Bundle



LADDER BRACKET

The Ladder Bracket is designed to attach the ladders to the vertical or horizontal members of the scaffold tower.

LADDER BRACKET								
PRODUCT			WIDTH		WEIGHT		PACKAGING	
CODE	REF. NO.	DESCRIPTION	METERS	FEET	KG	LB	QTY	TYPE
11.02.200.10	RSALB	Ladder Bracket 22mm	0.430	17"	3.18	7.01	170	Rack + Insert
11.02.200.20	RSALBW	Ladder Bracket Wedge	0.430	17"	3.23	7.12	170	Rack + Insert



** Ladder Bracket Wedge is not shown in the above illustration

STAIR STRINGER

The Steel Stair Stringer is the diagonal member of the 10 Leg Steel Stair System. The Stringer must be used in pairs in order to support the Stair Treads. The Stringer is used for a typical 6'-6" (2.0m) lift height and is also available for a 3'-3" (1.0m) lift height.

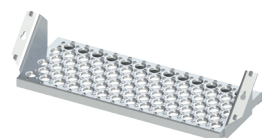
STAIR STRINGER								
PRODUCT			BAY LENGTH		WEIGHT		PACKAGING	
CODE	REF. NO.	DESCRIPTION	METERS	FEET	KG	LB	QTY	TYPE
15.01.106.00	RSSS106	Stair Stringer (1.0m Lift)	1.065	3'-6"	8.95	19.73	110	Rack
15.01.213.00	RSSS213	Stair Stringer (2.0m Lift)	2.13	7'	15.95	35.16	110	Rack



STAIR TREAD

The Stair Tread is designed as the horizontal member connecting to the Stair Stringers (both 1.0m and 2.0m lift) providing the steps of the stair system.

STAIR TREAD								
PRODUCT			WIDTH		WEIGHT		PACKAGING	
CODE	REF. NO.	DESCRIPTION	METERS	FEET	KG	LB	QTY	TYPE
15.02.081.00	RSST32	Stair Tread	0.81	32"	8.37	18.45	69	Bundle



ACCESS & EGRESS

Guardrail Standard

GUARDRAIL STANDARD/“CRAZY LEG”

The Guardrail Standard is designed to provide a vertical connection to secure Ledger Guardrails when creating ladder access openings in the side protection. An additional Ledger is required at one rosette below the deck level.

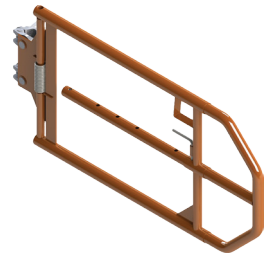


GUARDRAIL STANDARD/“CRAZY LEG”

PRODUCT			HEIGHT		WEIGHT		PACKAGING	
CODE	REF. NO.	DESCRIPTION	METERS	FEET	KG	LB	QTY	TYPE
01.31.163.00	VCL	Guardrail Standard	1.5	5'-3"	8.32	18.34	70	Rack

ADJUSTABLE SWING GATE

The Adjustable Swing Gate is designed as safety gates, providing the necessary fall prevention for safe scaffold access. Adjustable Swing Gates adjust from 3'-1"-4'-10" (948mm-1488mm).



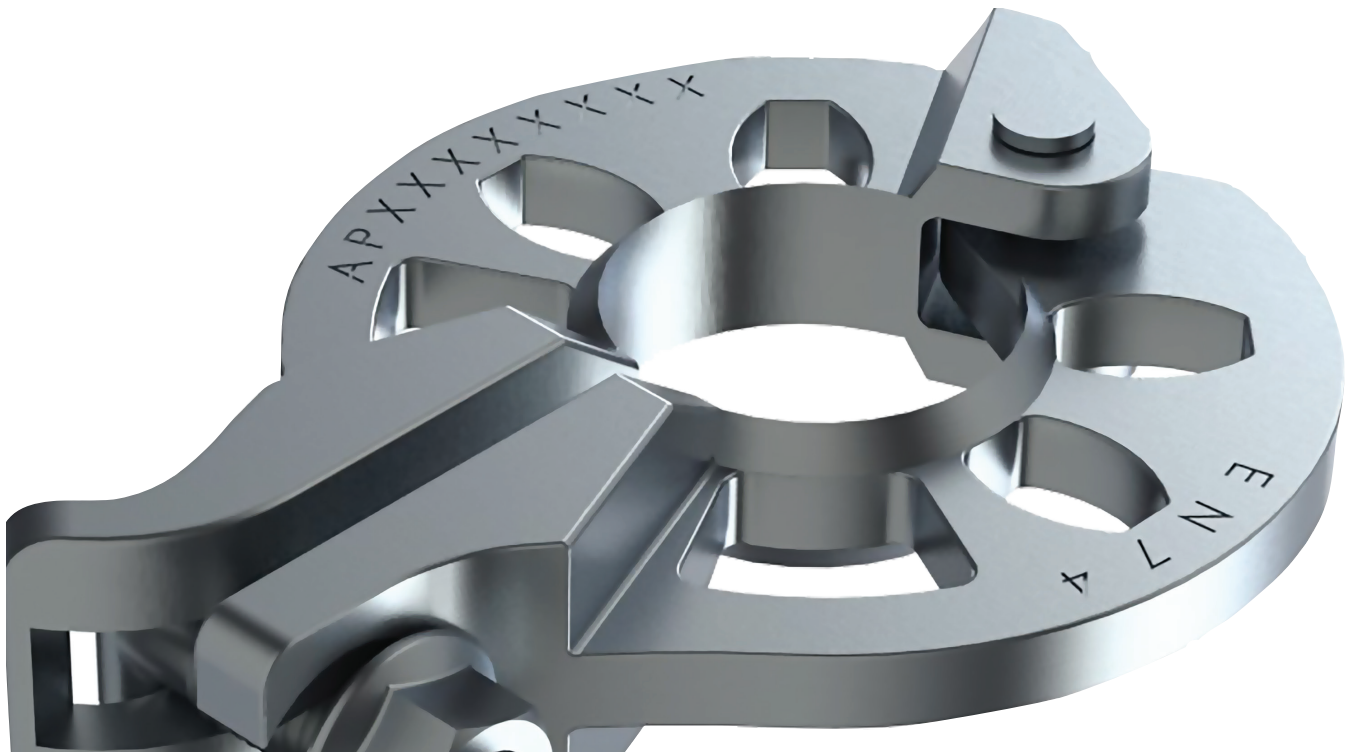
ADJUSTABLE SWING GATE

PRODUCT			WIDTH		WEIGHT		PACKAGING	
CODE	REF. NO.	DESCRIPTION	METERS	FEET	KG	LB	QTY	TYPE
10.01.200.10	SWGADJ-22	Adjustable Swing Gate	1.0	3'-3"	10.02	22.09	34	Rack

***Product Available in a Nut Size of 21mm (UK), 22mm (N. America) and 23mm (AUS)*

ACCESSORIES

Introduction



INTRODUCTION

AT-PAC has a continually growing list of accessories for its major product lines, specifically its Ringlock System Scaffold. These accessories enhance Ringlock capabilities for simple or complicated scaffold structures. AT-PAC's Engineering department has a wealth of experience when it comes to designing and manufacturing components. On request from customers, AT-PAC can also design, manufacture and supply special components.

These special components are taken from concept to completion in a timely manner to ensure customers are able to maintain productivity at all times. All components are analyzed by Professional Engineers and tested via recognized test laboratories, globally.

The accessory range of products include Rosette Clamps, Vertical Mid Transom, Davit Arm, Leg Lock, to name a few.

AT-PAC's Engineering department adopts the latest 3d design software and 3d printing capabilities in order to development new products/ accessories. This strong emphasis on design, analysis and testing brings AT-PAC to the forefront of design development within the scaffolding industry.

ACCESSORIES

Miscellaneous

ROSETTE CLAMP

The Rosette Clamp is used to add a rosette at any point on a vertical Standard or tube. It allows up to six connection points where Ledgers or Diagonal Bay Braces can be connected to it.

ROSETTE CLAMP								
PRODUCT				WEIGHT		PACKAGING		
CODE	REF. NO.	DESCRIPTION	KG	LB	QTY	TYPE		
01.30.000.10	RSRCL-22	Rosette Clamp, 22mm	1.19	2.62	750	Rack + Insert		

***Product Available in a Nut Size of 21mm (UK), 22mm (7/8" N. America) and 23mm (AUS)*



DAVIT ARM

The Davit Arm is designed to support a Gin Wheel for lifting light loads, or to serve as a tie off point for a Retractable Lifeline in accordance with the AT-PAC Safety Harness Connection Guide.

DAVIT ARM								
PRODUCT			HEIGHT		WEIGHT		PACKAGING	
CODE	REF. NO.	DESCRIPTION	METERS	FEET	KG	LB	QTY	TYPE
01.29.000.00	RSDA42	Davit Arm	1.14	3'-9"	10.21	22.50	50	Rack



LEG LOCK (SUSPENDED SCAFFOLD)

The Leg Lock, used in pairs, is designed to attach to the bottom rosette of the top standard and to the top rosette of the bottom standard. This joins the standards together in preparation for suspended scaffold applications.

LEG LOCK (SUSPENDED SCAFFOLD)								
PRODUCT			HEIGHT		WEIGHT		PACKAGING	
CODE	REF. NO.	DESCRIPTION	METERS	FEET	KG	LB	QTY	TYPE
01.28.000.00	LL5	Leg Lock (Suspended Scaffold)	0.50	19.7"	3.66	8.06	268	Rack

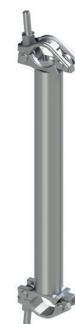


VERTICAL MID TRANSOM 19.7" (0.5m)

The Vertical Mid Transom fits vertically between two Ledgers positioned 19.7" (0.5m) apart and is attached with Half Clamps. When positioned at mid or third points between two Ledgers, the maximum point Load capacity of a Ledger is increased.

VERTICAL MID TRANSOM								
PRODUCT			HEIGHT		WEIGHT		PACKAGING	
CODE	REF. NO.	DESCRIPTION	METERS	FEET	KG	LB	QTY	TYPE
01.21.050.10	RSVT050	Vert. Mid Transom Bolt	0.50	19.7"	3.36	7.40	160	Rack
01.21.050.20	RSVT050W	Vert. Mid Transom Wedge	0.50	19.7"	3.32	7.31	160	Rack

***Bolt Type Vertical Mid Transom shown above.*



ACCESSORIES

Adapter Clamps

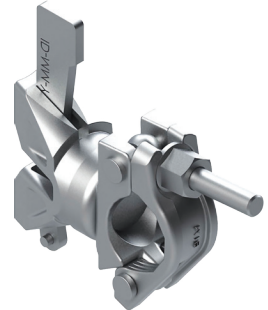
SWIVEL ADAPTER CLAMP (I-BOLT)

The Swivel Adapter Clamp (I-Bolt) is designed to easily join a scaffold tube to the rosette of a Ringlock Scaffold producing a variety of angles and configurations.

SWIVEL ADAPTER CLAMP (I-BOLT)

PRODUCT			WEIGHT		PACKAGING	
CODE	REF. NO	DESCRIPTION	KG	LB	QTY	TYPE
05.02.200.10	TCSWAC22	Swivel Adapter Clamp	1.60	3.52	650	Rack + Insert

***Product Available in a Nut Size of 21mm (UK), 22mm (7/8" N. America) and 23mm (AUS)*



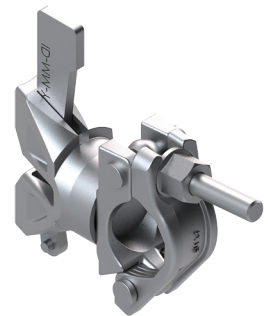
RIGHT ANGLE ADAPTER CLAMP (I-BOLT)

The Right Angle Adapter Clamp (I-Bolt) is designed to easily join a scaffold tube directly to the rosette at 90 degrees.

RIGHT ANGLE ADAPTER CLAMP (I-BOLT)

PRODUCT			WEIGHT		PACKAGING	
CODE	REF. NO	DESCRIPTION	KG	LB	QTY	TYPE
05.01.200.10	TCRAAC22	Right Angle Adapter Clamp	1.56	3.43	650	Rack + Insert

***Product Available in a Nut Size of 21mm (UK), 22mm (7/8" N. America) and 23mm (AUS)*

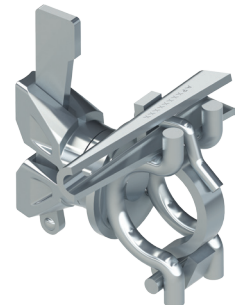


SWIVEL ADAPTER CLAMP (WEDGE)

The Swivel Adapter Clamp (Wedge) is designed to easily join a scaffold tube directly to the rosette creating a variety of angular options.

SWIVEL ADAPTER CLAMP (WEDGE)

PRODUCT			WEIGHT		PACKAGING	
CODE	REF. NO	DESCRIPTION	KG	LB	QTY	TYPE
05.05.200.20	N/A	Swivel Adapter Clamp	1.77	3.90	650	Rack + Insert

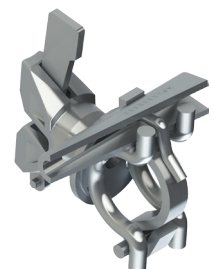


RIGHT ANGLE ADAPTER CLAMP (WEDGE)

The Right Angle Adapter Clamp (Wedge) is designed to easily join a scaffold tube directly to the rosette creating 90 degree angles.

RIGHT ANGLE ADAPTER CLAMP (WEDGE)

PRODUCT			WEIGHT		PACKAGING	
CODE	REF. NO	DESCRIPTION	KG	LB	QTY	TYPE
05.04.200.20	TCTRAWAC	Right Angle Adapter Clamp	1.55	3.41	650	Rack + Insert



ACCESSORIES

Pins & Racks

PIG TAIL PIN

The Pig Tail Pin is designed to lock two standards together to resist uplift.

PIG TAIL PIN							
PRODUCT				WEIGHT		PACKAGING	
CODE	REF. NO.	DESCRIPTION		KG	LB	QTY	TYPE
35.02.000.00	SPTP	Pig Tail Pin		0.05	0.11	500	Bag



TOGGLE PIN

The Toggle Locking Pin is designed to lock two standards together to resist uplift.

TOGGLE PIN							
PRODUCT				WEIGHT		PACKAGING	
CODE	REF. NO.	DESCRIPTION		KG	LB	QTY	TYPE
35.03.000.00	STP	Toggle Pin		0.06	0.13	1000	Bag



SCAFFOLD RACK

The Scaffold Rack is designed for storage of larger items such as Standards, Ledgers, Steel Plank, etc.

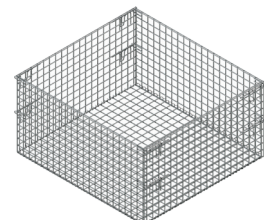
SCAFFOLD RACK								
PRODUCT			HEIGHT/DEPTH		WEIGHT		PACKAGING	
CODE	REF. NO.	DESCRIPTION	METERS	FEET	KG	LB	QTY	TYPE
99.02.000.00	CSR	Scaffold Rack	0.77 x 1.1	2'-6" x 3'-7"	45.61	100.55	1	Rack



SCAFFOLD CAGE INSERT

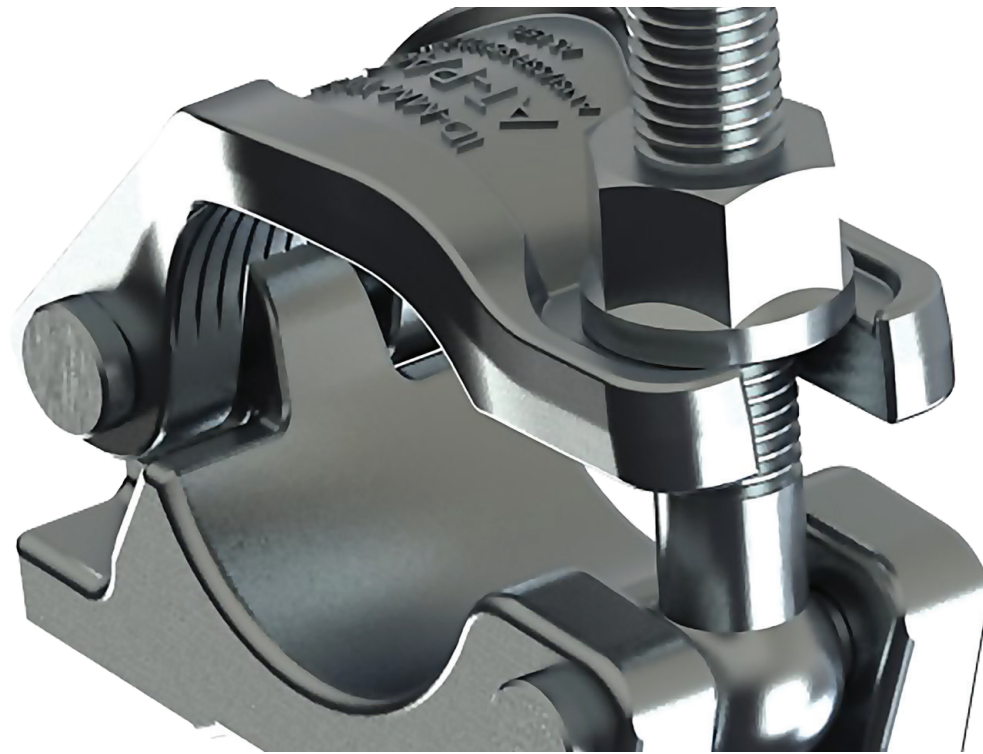
The Scaffold Cage Insert is designed to fit into the storage rack, to create the Basket for storage of smaller scaffold items such as clamps and accessories.

SCAFFOLD INSERT								
PRODUCT			HEIGHT/DEPTH		WEIGHT		PACKAGING	
CODE	REF. NO.	DESCRIPTION	METERS	FEET	KG	LB	QTY	TYPE
99.01.000.00	CSCI	Scaffold Cage Insert	0.55 x 1.0	1'-9" x 3'-3"	29.96	66.05	1	Insert



TUBE & CLAMP

Introduction



INTRODUCTION

AT-PAC Tube & Clamp range of products are aimed at providing customers with Tube and Clamps of a broad range of types and sizes that can be used for any application, including with our AT-PAC Ringlock System.

A complete range of Clamps is available, ranging from simple Putlog Clamps to robust Beam Clamps with either wedge or bolt fixings, depending upon the needs of the application and market. All of these clamps are manufactured to stringent quality specifications and go through rigorous testing and checking before being shipped to customers.

All Clamps are tested to ANSI/SSFI, EN, BS and AS/NZS requirements, including the EN74-1 standard which is one of the world's most stringent clamp testing standard. Our wedge Clamps are cold weather tested at -40 degrees Celsius in order for them to be certified to withstand the harsh Canadian winters.

AT-PAC also provides Aluminum Tubes for the Canadian market and these are made from high grade, thick wall aluminum extrusions. Whichever type of tube is required, they are all made to exacting specifications and are individually inspected for accuracy and compliance.

TUBE & CLAMP

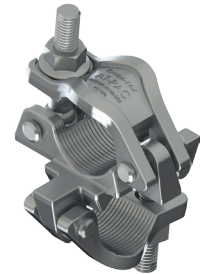
Clamps

RIGHT ANGLE CLAMP (I-BOLT)

The Right Angle Clamp (I-Bolt) is designed to be used in conjunction with scaffold tube to create 90 degree angles.

RIGHT ANGLE CLAMP (I-BOLT)						
PRODUCT			WEIGHT		PACKAGING	
CODE	REF. NO	DESCRIPTION	KG	LB	QTY	TYPE
04.01.202.10	TCRAB55	Right Angle Clamp	1.48	3.26	700	Rack + Insert

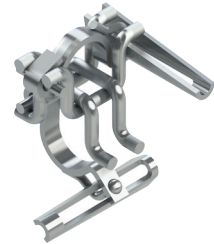
***Product Available in a Nut Size of 21mm (UK), 22mm (7/8" N. America) and 23mm (AUS)*



RIGHT ANGLE CLAMP (WEDGE)

The Right Angle Clamp (Wedge) is designed to be used in conjunction with scaffold tube to create 90 degree angles.

RIGHT ANGLE CLAMP (WEDGE)						
PRODUCT			WEIGHT		PACKAGING	
CODE	REF. NO	DESCRIPTION	KG	LB	QTY	TYPE
04.07.202.20	TCRAW55	Right Angle Clamp	1.50	3.30	500	Rack + Insert



SWIVEL CLAMP (I-BOLT)

The Swivel Clamp (I-Bolt) is designed to be used in conjunction with scaffold tube to create a variety of angles.

SWIVEL CLAMP (I-BOLT)						
PRODUCT			WEIGHT		PACKAGING	
CODE	REF. NO	DESCRIPTION	KG	LB	QTY	TYPE
04.02.202.10	TCSWB55C	Swivel Clamp	1.83	4.03	700	Rack + Insert

***Product Available in a Nut Size of 21mm (UK), 22mm (7/8" N. America) and 23mm (AUS)*



SWIVEL CLAMP (WEDGE)

The Swivel Clamp (Wedge) is designed to be used in conjunction with scaffold tube to create a variety of angles.

SWIVEL CLAMP (WEDGE)						
PRODUCT			WEIGHT		PACKAGING	
CODE	REF. NO	DESCRIPTION	KG	LB	QTY	TYPE
04.08.202.20	TCSWW55	Swivel Clamp	1.69	3.72	500	Rack + Insert



TUBE & CLAMP

Clamps & End-To-End Joiners

BEAM CLAMP FORGED RIGID

The Rigid Beam Clamp is designed to connect scaffold tube to the flanges of structural steel beams. They can also be used to support suspended scaffold from structural steel.

BEAM CLAMP RIGID						
PRODUCT				WEIGHT		PACKAGING
CODE	REF. NO	DESCRIPTION	KG	LB	QTY	TYPE
04.03.200.10	TCBCDF-22	Beam Clamp Rigid	1.64	3.61	700	Rack + Insert

***Product Available in a Nut Size of 21mm (UK), 22mm (7/8" N. America) and 23mm (AUS)*



SWIVEL BEAM CLAMP

The Swivel Beam Clamp is designed to connect scaffold tube to the flanges of structural steel beams. They can also be used to support suspended scaffold and create a variety of angles.

BEAM CLAMP SWIVEL						
PRODUCT				WEIGHT		PACKAGING
CODE	REF. NO	DESCRIPTION	KG	LB	QTY	TYPE
04.04.200.10	TCBCS-22	Beam Clamp Swivel	1.71	3.76	700	Rack + Insert

***Product Available in a Nut Size of 21mm (UK), 22mm (7/8" N. America) and 23mm (AUS)*

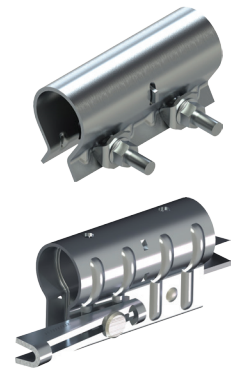


END TO JOINER—EXTERNAL

The End to End Joiner is designed to fit over over the outside of the tubes and provide a rigid connection between two tubes. A Bolt or Wedge Type is available.

END TO END JOINER—EXTERNAL						
PRODUCT				WEIGHT		PACKAGING
CODE	REF. NO	DESCRIPTION	KG	LB	QTY	TYPE
04.10.000.10	TCBCDF-22	External Tube Joiner, 22mm Nut (7/8")	1.07	2.35	672	Rack + Insert
04.09.202.20	TCJ55	End to End Joiner Wedge Clamp 2x2	1.19	2.62	500	Rack + Insert

***Product Available in a Nut Size of 21mm (UK), 22mm (7/8" N. America) and 23mm (AUS)*



END TO END JOINER—INTERNAL

The End to End Joiner is designed to fit inside the end of the tubes and provide a rigid connection.

END TO END JOINER—INTERNAL						
PRODUCT				WEIGHT		PACKAGING
CODE	REF. NO	DESCRIPTION	KG	LB	QTY	TYPE
04.11.000.10	TCBCS-22	Internal Tube Joiner, 22mm Nut (7/8")	0.72	1.58	1500	Rack + Insert

***Product Available in a Nut Size of 21mm (UK), 22mm (7/8" N. America) and 23mm (AUS)*



TUBE & CLAMP

Steel/Aluminum Tube

STEEL TUBE WITH FITTING

The Steel Tube with Fittings can be used in conjunction with Bolt Clamps to create a versatile scaffolding system.

STEEL TUBE WITH FITTING						
PRODUCT				WEIGHT		PACKAGING
CODE	REF. NO	DESCRIPTION	KG	LB	QTY	TYPE
02.01.004.10	TCST04	Steel Tube w/fittings 4'	4.35	9.59	200	Rack
02.01.006.10	TCST06	Steel Tube w/fittings 6'	5.96	13.13	200	Rack
02.01.008.10	TCST08	Steel Tube w/fittings 8'	7.31	16.11	200	Rack
02.01.010.10	TCST10	Steel Tube w/fittings 10'	9.20	20.28	200	Rack
02.01.013.10	TCST13	Steel Tube w/fittings 13'	11.70	25.79	200	Rack
02.01.016.10	TCST16	Steel Tube w/fittings 16'	15.45	34.06	200	Rack



ALUMINUM TUBE

The Aluminum Tube can be used in conjunction with Wedge Clamps to create a versatile scaffolding system.

ALUMINUM TUBE						
PRODUCT			WEIGHT		PACKAGING	
CODE	DESCRIPTION	KG	LB	QTY	TYPE	
41.01.002.00	Aluminum Tube 2'	0.82	1.80	50	Bundle	
41.01.003.00	Aluminum Tube 3'	1.23	2.71	50	Bundle	
41.01.004.00	Aluminum Tube 4'	1.64	3.62	50	Bundle	
41.01.005.00	Aluminum Tube 5'	2.05	4.52	50	Bundle	
41.01.006.00	Aluminum Tube 6'	2.46	5.42	50	Bundle	
41.01.007.00	Aluminum Tube 7'	2.86	6.30	50	Bundle	
41.01.008.00	Aluminum Tube 8'	3.28	7.23	50	Bundle	
41.01.009.00	Aluminum Tube 9'	3.68	8.11	50	Bundle	
41.01.010.00	Aluminum Tube 10'	4.92	10.85	50	Bundle	
41.01.012.00	Aluminum Tube 12'	4.10	9.04	50	Bundle	
41.01.013.00	Aluminum Tube 13'	5.32	11.73	50	Bundle	
41.01.014.00	Aluminum Tube 14'	5.74	12.65	50	Bundle	
41.01.015.00	Aluminum Tube 15'	6.14	13.53	50	Bundle	
41.01.016.00	Aluminum Tube 16'	6.56	14.46	50	Bundle	
41.01.018.00	Aluminum Tube 18'	7.38	16.27	50	Bundle	
41.01.019.00	Aluminum Tube 19'	7.77	17.13	50	Bundle	
41.01.020.00	Aluminum Tube 20'	8.20	18.08	50	Bundle	
41.01.024.00	Aluminum Tube 24'	9.82	21.64	50	Bundle	



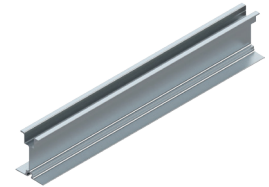
TUBE & CLAMP

Aluminum Beam

6.5" ALUMINUM BEAM

The Aluminum Beam is used to span large distances and typically used for Shoring, Forming or creating dance floors. The Aluminum Beam is fitted with a plastic nailer strip.

6.5" ALUMINUM BEAM						
PRODUCT		WEIGHT		PACKAGING		
CODE	DESCRIPTION	KG	LB	QTY	TYPE	
22.01.061.00	Aluminum Beam 6½" x 2' (0.61m)	3.64	8.00	30	Bundle	
22.01.091.00	Aluminum Beam 6½" x 3' (0.91m)	5.45	12.02	30	Bundle	
22.01.121.00	Aluminum Beam 6½" x 4' (1.21m)	7.27	16.03	30	Bundle	
22.01.152.00	Aluminum Beam 6½" x 5' (1.52m)	9.09	20.04	30	Bundle	
22.01.168.00	Aluminum Beam 6½" x 5'-6" (1.68)	10.00	22.04	30	Bundle	
22.01.182.00	Aluminum Beam 6½" x 6' (1.82m)	10.91	24.05	30	Bundle	
22.01.198.00	Aluminum Beam 6½" x 6'-6" (1.98m)	11.82	26.05	30	Bundle	
22.01.213.00	Aluminum Beam 6½" x 7' (2.13m)	12.73	28.06	30	Bundle	
22.01.229.00	Aluminum Beam 6½" x 7'-6" (2.29m)	13.64	30.07	30	Bundle	
22.01.243.00	Aluminum Beam 6½" x 8' (2.43m)	14.55	32.07	30	Bundle	
22.01.259.00	Aluminum Beam 6½" x 8'-6" (2.59m)	15.45	34.06	30	Bundle	
22.01.275.00	Aluminum Beam 6½" x 9' (2.75m)	16.36	36.06	30	Bundle	
22.01.290.00	Aluminum Beam 6½" x 9'-6" (2.90m)	17.27	38.07	30	Bundle	
22.01.305.00	Aluminum Beam 6½" x 10' (3.05m)	18.60	41.01	30	Bundle	
22.01.320.00	Aluminum Beam 6½" x 10'-6" (3.20m)	19.27	42.48	30	Bundle	
22.01.335.00	Aluminum Beam 6½" x 11' (3.35m)	20.00	44.09	30	Bundle	
22.01.351.00	Aluminum Beam 6½" x 11'-6" (3.51m)	20.91	46.10	30	Bundle	
22.01.366.00	Aluminum Beam 6½" x 12' (3.66m)	22.32	49.21	30	Bundle	
22.01.381.00	Aluminum Beam 6½" x 12'-6" (3.81m)	22.73	50.11	30	Bundle	
22.01.411.00	Aluminum Beam 6½" x 13' (4.11m)	23.64	52.12	30	Bundle	
22.01.427.00	Aluminum Beam 6½" x 14' (4.27m)	26.04	57.40	30	Bundle	
22.01.442.00	Aluminum Beam 6½" x 14'-6" (4.42m)	26.36	58.11	30	Bundle	
22.01.457.00	Aluminum Beam 6½" x 15' (4.57m)	27.27	60.12	30	Bundle	
22.01.472.00	Aluminum Beam 6½" x 15'-6" (4.72m)	28.18	62.13	30	Bundle	
22.01.488.00	Aluminum Beam 6½" x 16' (4.88m)	29.76	65.61	30	Bundle	
22.01.503.00	Aluminum Beam 6½" x 16'-6" (5.03m)	30.00	66.14	30	Bundle	
22.01.518.00	Aluminum Beam 6½" x 17' (5.18m)	30.91	68.14	30	Bundle	
22.01.533.00	Aluminum Beam 6½" x 17'-6" (5.33m)	31.82	70.15	30	Bundle	
22.01.548.00	Aluminum Beam 6½" x 18' (5.48m)	33.48	73.81	30	Bundle	
22.01.564.00	Aluminum Beam 6½" x 18'-6" (5.64m)	33.64	74.16	30	Bundle	

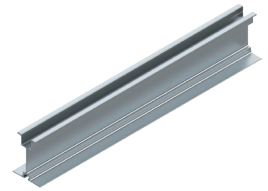


TUBE & CLAMP

Aluminum Beam (Cont'd.), A-Clamp

6.5" ALUMINUM BEAM

PRODUCT		WEIGHT		PACKAGING	
CODE	DESCRIPTION	KG	LB	QTY	TYPE
22.01.579.00	Aluminum Beam 6½" x 19' (5.79m)	34.55	76.16	30	Bundle
22.01.614.00	Aluminum Beam 6½" x 20' (6.14m)	37.20	82.01	30	Bundle
22.01.639.00	Aluminum Beam 6½" x 21' (6.39m)	39.06	86.11	30	Bundle
22.01.671.00	Aluminum Beam 6½" x 22' (6.71m)	40.92	90.21	30	Bundle
22.01.732.00	Aluminum Beam 6½" x 24' (7.32m)	44.64	98.41	30	Bundle
22.01.762.00	Aluminum Beam 6½" x 25' (7.62m)	45.80	101.00	30	Bundle
22.01.792.00	Aluminum Beam 6½" x 26' (7.92m)	48.36	106.61	30	Bundle
22.01.852.00	Aluminum Beam 6½" x 28' (8.52m)	52.08	114.81	30	Bundle
22.01.914.00	Aluminum Beam 6½" x 30' (9.41m)	54.40	120.00	30	Bundle
22.01.975.00	Aluminum Beam 6½" x 32' (9.75m)	58.10	128.00	30	Bundle

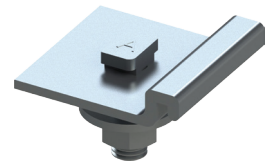


A-CLAMP

The A-Clamp is used to secure Aluminum Beams to a U-Head or Flat Plate. A-Clamps must be used in pairs.

A-CLAMP

PRODUCT			WEIGHT		PACKAGING	
CODE	REF. NO	DESCRIPTION	KG	LB	QTY	TYPE
04.12.000.00	TCACBC	A-Clamp Assembly/Beam Clip	0.14	0.31	500	Rack+Insert





DISCLAIMER

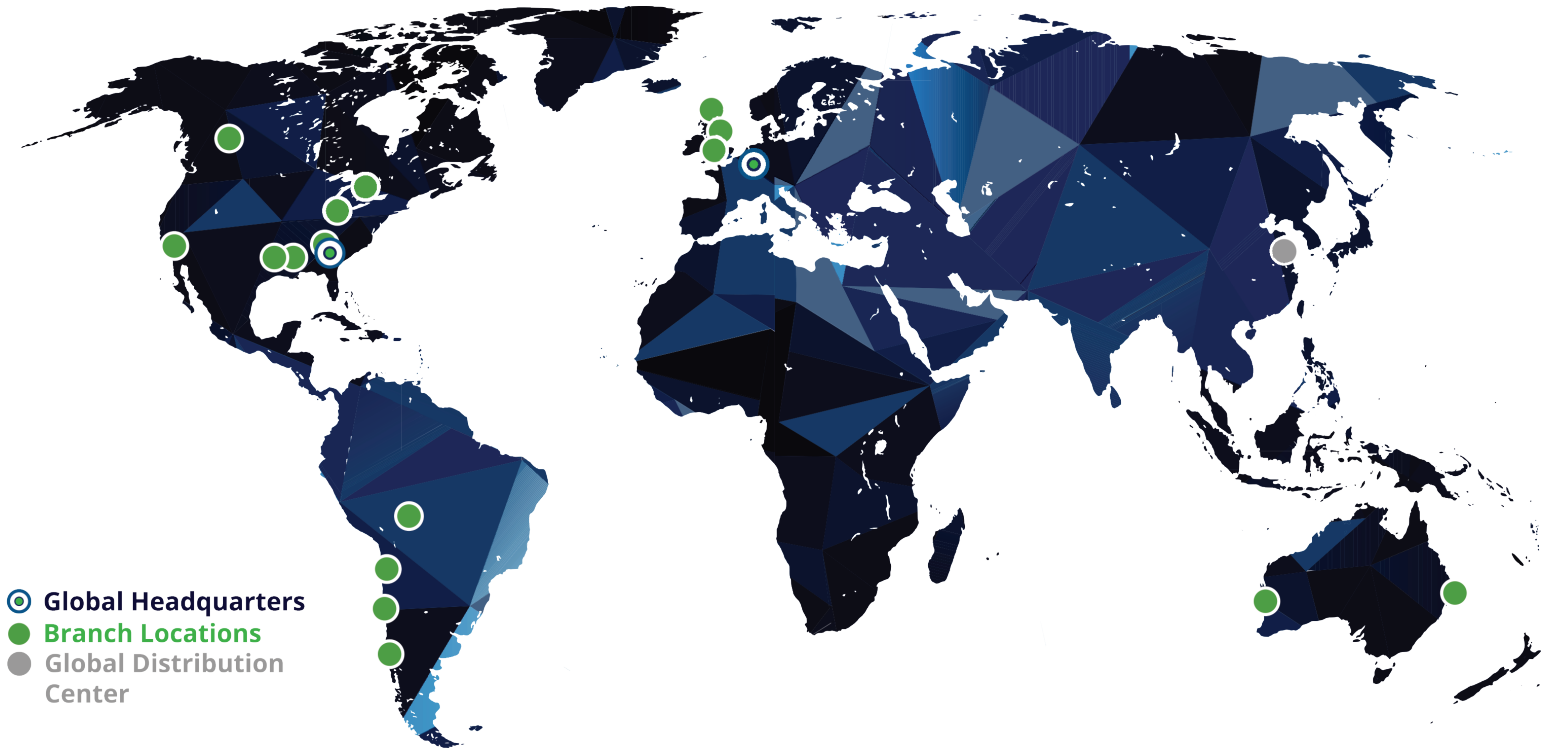
DISCLAIMER

The content of this document is provided for information only and without responsibility. AT-PAC and its suppliers make no representations about the suitability, accuracy, currency or completeness of the information contained in this document for any purpose, including, without limitation, availability, safety data or terms of sale. Such information is provided 'as is' without warranties of any kind, all of which are hereby disclaimed. In no event shall AT-PAC or its suppliers be liable for any damages of any kind in any type of action arising out of or related to the use of information available from this document. AT-PAC may, in its sole discretion, revise the information contained herein at any time without notice.

Copyright © 2016 Atlantic Pacific Equipment. All rights reserved. info@at-pac.com



COMPLETE SCAFFOLDING SOLUTIONS



GLOBAL CORPORATE OFFICE:

10904 Crabapple Road | Roswell, GA | 30075 | USA
Main: 678.505.3957 | Fax: 866.720.3307 | General Email: info@at-pac.com

ADDITIONAL BRANCH OFFICES:

ATLANTA
770.592.9663

BATON ROUGE
225.387.5111

HOUSTON
713.946.2123

LOS ANGELES
951.710.6420

COLUMBUS, OH
740.223.8164

EDMONTON, ALBERTA
780.440.3099

TORONTO, ONTARIO
416.726.6417

Antofagasta, CL
Concepcion, CL
Santiago, CL
Santa Cruz, BO

Glasgow, UK
Leeds, UK
London, UK
Birmingham, UK

Brisbane, QLD, AUS
Perth, WA, AUS