



2016 AT-PAC RINGLOCK
PRODUCT CATALOGUE

UNITED KINGDOM

TABLE OF CONTENTS

INTRODUCTION	4
INTRODUCTION TO AT-PAC	4
RINGLOCK QUALITY FACTORS	5
OVERVIEW	5
PRODUCT TRACEABILITY	6
RINGLOCK NODE CONNECTION	7
COMPONENT IDENTIFICATION	8
COLOUR CODED COMPONENTS.....	9
RINGLOCK	10
BASE	
SCREWJACK / BASE JACK	10
SWIVELJACK	10
CASTOR 0.3M.....	10
STARTER / BASE COLLAR.....	11
ADAPTER FOR 0.3M CASTOR	11
STANDARDS	
STANDARD WITH CRIMPED SPIGOT.....	12
LEDGERS	
LEDGER O-TYPE	13
TRUSS LEDGER O-TYPE	13
LEDGER U-TYPE	14
TRANSOMS	
LEDGER TO PLANK TRANSOM O-TYPE	15
PLANK TO PLANK TRANSOM O-TYPE	15
MID TRANSOM O-TYPE	15
LEDGER TO PLANK TRANSOM U-TYPE	16
PLANK TO PLANK TRANSOM U-TYPE	16
BRACKETS	
SIDE/HOP-UP BRACKET O-TYPE	17
SIDE/CONSOLE BRACKET O-TYPE	17
SIDE/HOP UP BRACKET U-TYPE.....	17
SIDE/CONSOLE BRACKET U-TYPE	17
BRACES	
BAY BRACES	18
TELESCOPIC BRACES.....	19
GIRDERS/SPIGOT ADAPTERS	
LATTICE GIRDER, NO SPIGOT 0.5M.....	20
SPIGOT ADAPTER CLAMP FOR GIRDERS	20
SPIGOT ADAPTER CLAMP.....	20
WORK PLATFORMS	21
PLANKS	
STEEL PLANK O-TYPE 320MM.....	22
STEEL PLANK O-TYPE 190MM.....	22
STEEL PLANK U-TYPE.....	23
DECK LOCK.....	23
TOEBOARDS/INFILL	
INTERLOCKING TOEBOARD 24MM	24
TOE BOARD RETAINING CLAMP.....	24
INFILL PLANK 190MM.....	24

TABLE OF CONTENTS

GAP FILLER PLANK.....	25
GAP FILLER PLATE	25
ACCESS & EGRESS.....	26
STEEL STAIR	
STEEL STAIR STRINGER.....	27
STEEL STAIR TREAD.....	27
ALUMINIUM LADDER DECK	
ALUMINIUM LADDER HATCH DECK	27
ALUMINIUM PLATFORM STAIR O-TYPE	28
ALUMINIUM PLATFORM STAIR GUARDRAILS.....	28
STAIR/ACCESS	
GUARDRAIL STANDARD	29
ADJUSTABLE SAFETY GATE.....	29
ACCESS BARRIER	29
ACCESSORIES.....	30
CLAMPS	
ROSETTE CLAMP	31
SWIVEL ADAPTER CLAMP.....	31
RIGHT ANGLE ADAPTER CLAMP.....	31
LEG LOCK (SUSPENDED SCAFFOLD).....	31
LOADING TOWER COMPONENTS	
LOADING TOWER TRANSOM O-TYPE	32
LOADING TOWER GATE	32
LOADING TOWER LIFTING ARM	32
REAR GUARDRAIL	32
MISCELLANEOUS ITEMS	
RETURN LEDGER HOOK.....	33
BRICKGUARD PANEL.....	33
RETURN GUARDRAIL FRAME.....	33
PINS/STORAGE	
PIG TAIL PIN	34
TOGGLE PIN	34
SCAFFOLD CAGE INSERT	34
DISCLAIMER	35

INTRODUCTION

INTRODUCTION TO AT-PAC



Since 1995, AT-PAC has offered Complete Scaffolding Solutions to our strategic clients throughout the world, matching our expertise to the specific needs of our Customers. With our extensive experience in the industrial market, we specialize in Oil, Gas & Chemicals, Power & Energy and Mining & Refining projects. AT-PAC prides itself on building long term and sustainable relationships with both our customers and team members and distributes only the highest quality products by ensuring that our production process adheres to our rigorous quality assurance program and quality control.

AT-PAC has locations throughout the USA, Canada, UK, Australia and South America. We currently supply Asia-Pacific, Africa, the Middle East and beyond. Our unparalleled expertise and professionalism enables us to consistently deliver Complete Scaffolding Solutions. Our experienced customer driven team provides a seamless service from product development, supply chain management, production, quality control, delivery and local engineering support available for fast, effective solutions where required.

AT-PAC Ringlock is a modular system scaffold which enables users to quickly and efficiently erect, use and dismantle temporary work structures. The AT-PAC Ringlock system conforms to European standards BS EN12810 and BS EN12811. AT-PAC Ringlock is compliant with The National Access & Scaffolding Confederation (NASC) Code of Practice for System Scaffold.

**AT-PAC LTD. is a Non-Contracting Full Member of the
National Access & Scaffolding Confederation**



OVERVIEW

RINGLOCK QUALITY FACTORS



All of AT-PAC Euro range of Ringlock products are engineered to meet the highest quality standards based on three simple factors:

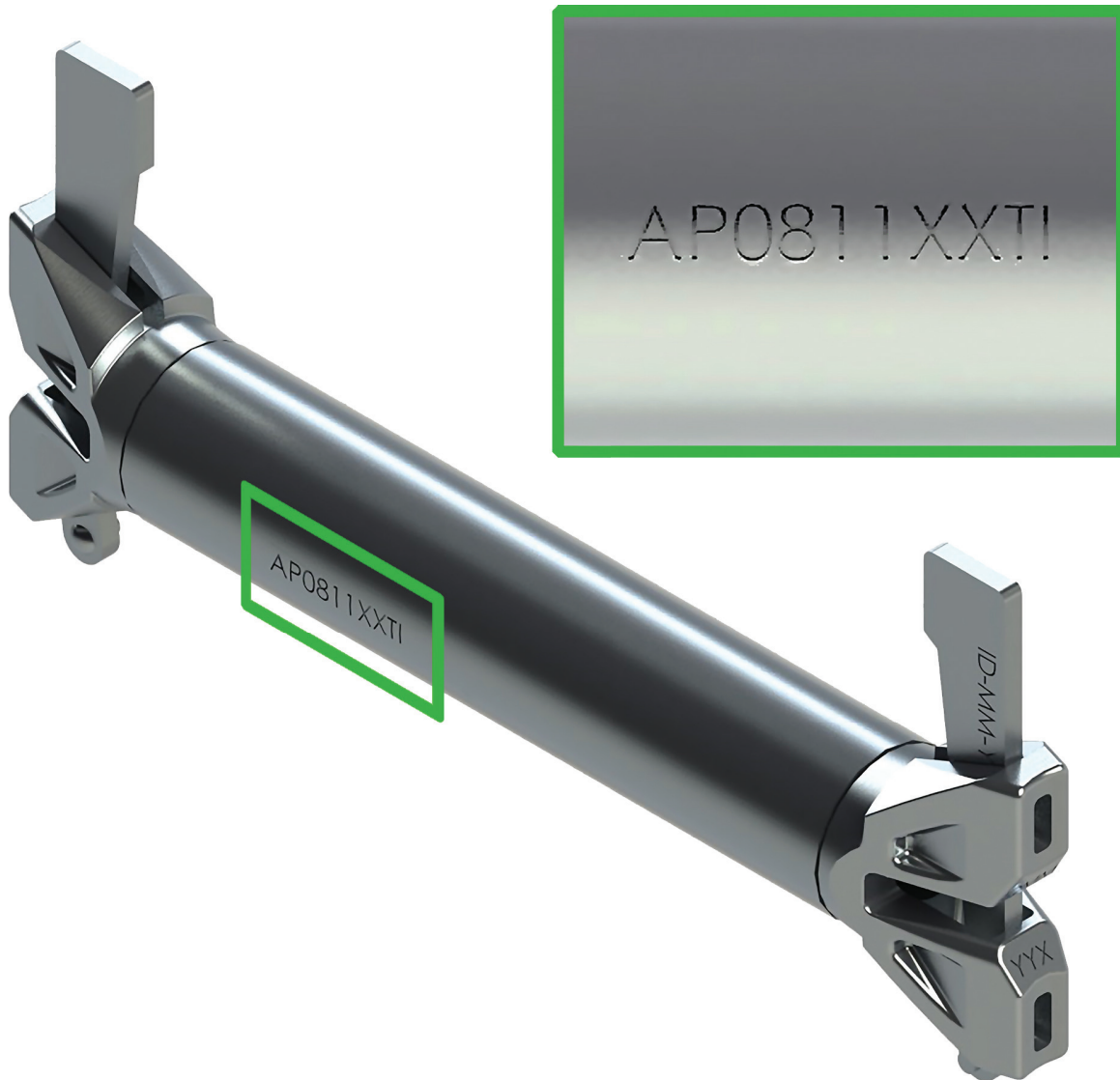
- Material** We only use the highest quality steel in our products. Our steel is certified and tested, it conforms to or exceeds industry standards no matter the location or climate.
- Fit** AT-PAC products are engineered with versatility and usability in mind. Our modified product designs increase efficiencies and productivity, saving your projects time and money.
- Finish** Where applicable, our products are finished and protected by hot-dipped zinc galvanizing. This method of finishing maximizes the utilization and extends the product life.

For additional information on Ringlock system components please consult your local AT-PAC representative.

OVERVIEW

PRODUCT TRACEABILITY

All AT-PAC components are stamped with traceability marks.



Key

Batch Number: AP 08 11 XX TI

AP = AT-PAC

08 = Month of Manufacture

11 = Year of Manufacture

XX = Order Number

TI = Reference Number

OVERVIEW

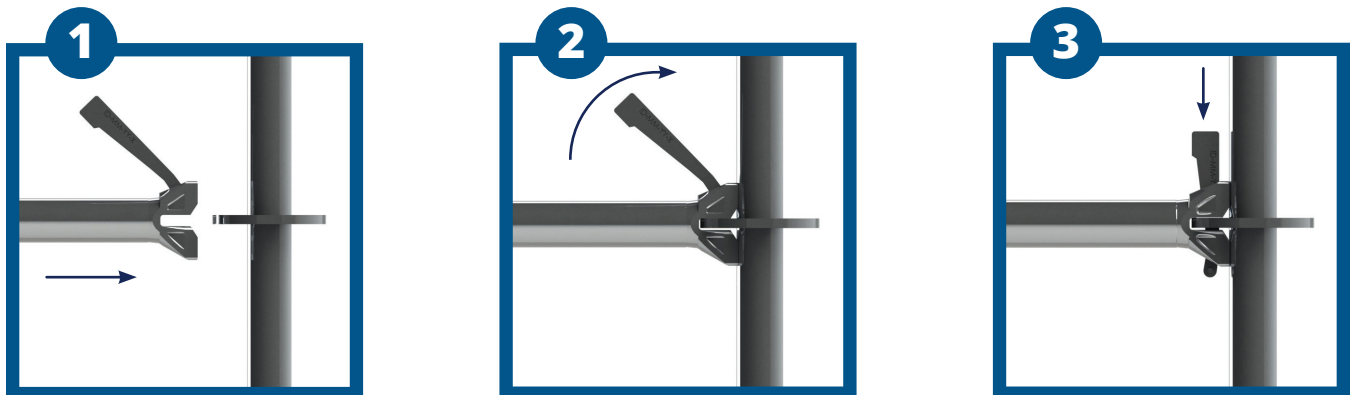
RINGLOCK NODE CONNECTION

Ringlock node connection consists of Standards with rosettes every 0.5m and horizontal members with a cast end captive wedge (Ledger and Transom). When connected together the Ledger ends and rosettes create a very strong connection. It is this connection that transmits forces throughout the scaffold structure.

The Ringlock rosette has a diameter of 123mm and has been manufactured to have 8 holes, 4 of which are small and 4 of which are large. The smaller holes represent the 90 degree angle at which Ledgers and Transoms are fitted. The larger holes accommodate the Diagonal Bay Braces.

The rosette also allows for the Ledgers to be connected into the larger holes. This gives up to 15 degrees of maneuverability in each direction. This provides the ability to move the Ledgers to clear obstacles.

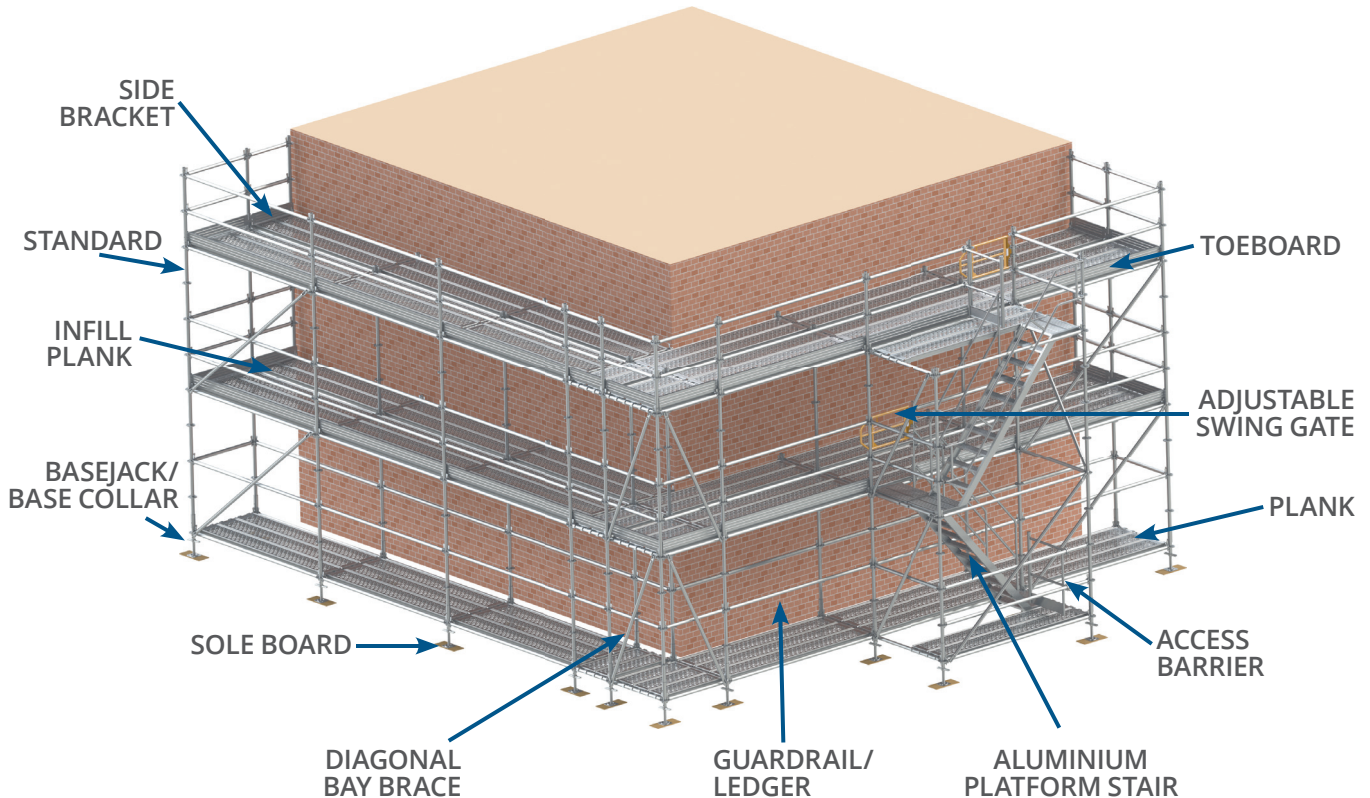
TO MAKE A CONNECTION



OVERVIEW

COMPONENT IDENTIFICATION

The following diagram represents the most common Ringlock components used. Most scaffold structures are made from these basic components yet the Ringlock system comes with a variety of accessories for all your scaffolding requirements.



The above layout provides a typical arrangement of the Ringlock system and we can provide you with a variety of means of access. These include:

- Ladder Access using Ledger to Plank and Plank to Plank Transoms
- Stair Treads and Stringers to form integral stairs or independent stair towers.
- Aluminium Platform Stairs in one bay.
- All Aluminium Decks with integral ladders.

OVERVIEW

COLOUR CODED COMPONENTS

A new feature offered by AT-PAC, are colour coded horizontal components manufactured with a coloured identification label. This process allows the scaffolder to easily match particular components for each size of bay to be erected. (For example: A Purple Ledger (1.09m) will work with a Purple Diagonal and a Purple Plank.)



RED- 0.39M COMPONENTS



MAGENTA- 1.40M COMPONENTS



WHITE- 0.45M COMPONENTS



ORANGE- 1.57M COMPONENTS



YELLOW- 0.73M COMPONENTS



CYAN- 2.07M COMPONENTS



BLACK- 1.036M COMPONENTS



GREEN- 2.57M COMPONENTS



PURPLE- 1.09M COMPONENTS



BROWN- 3.07M COMPONENTS



BLUE- ITEMS WITHOUT SPECIFIC SIZE

RINGLOCK

Base

SCREWJACK / BASE JACK

The Screwjack is used as a starting base for a scaffold. It is adjustable in height to allow for compensation on uneven surfaces so that a level scaffold is always attainable.

SCREWJACK / BASE JACK					
PRODUCT		HEIGHT	WEIGHT	PACKAGING	
CODE	DESCRIPTION	METRES	KG	QTY	TYPE
06.01.060.00	Screwjack / Base Jack	0.60	3.87	220	Rack



SWIVEL JACK

The Swivel Jack is used as a starting base for a scaffold. It is adjustable in height and angle to allow for compensation on uneven surfaces so that a level scaffold is always attainable.

Swivel Jack					
PRODUCT		HEIGHT	WEIGHT	PACKAGING	
CODE	DESCRIPTION	METRES	KG	QTY	TYPE
06.03.078.00	Swivel Jack	0.78	6.02	160	Rack



CASTOR 0.3m

The Castor 0.3m is designed to provide mobility to a medium to large size scaffold tower allowing the tower to roll across a flat surface.

CASTOR 0.3m					
PRODUCT		DIAMETER	WEIGHT	PACKAGING	
CODE	DESCRIPTION	METRES	KG	QTY	TYPE
07.02.030.00	Castor 0.3m	0.30	16.01	220	Rack



RINGLOCK

Base

STARTER/BASE COLLAR

The Base Collar is the beginning of the Ringlock Scaffolding system. It sits upon a fixed or Adjustable Base.

STARTER / BASE COLLAR					
PRODUCT		HEIGHT	WEIGHT	PACKAGING	
CODE	DESCRIPTION	METRES	KG	QTY	TYPE
01.27.000.00	Starter/Base Collar	0.301	2.43	385	Rack



ADAPTER FOR 0.3m CASTOR

The Adapter for 0.3m Castor is used as a base connection point to a 0.3m Castor and provides a base spigot to use with Standards or Base Collars to begin scaffold construction.

ADAPTER FOR 0.3m CASTOR					
PRODUCT		HEIGHT	WEIGHT	PACKAGING	
CODE	DESCRIPTION	METRES	KG	QTY	TYPE
01.33.030.00	Adapter for 12" Castor	0.249	4.24	144	Rack + Insert



STANDARD WITH CRIMPED SPIGOT

The Standard with Crimped Spigot is the vertical member of Ringlock scaffolding that utilises a crimped spigot. The Rosettes are located at fixed increments 0.5m for attaching horizontal Transom/Ledgers and Diagonal Braces.

STANDARD WITH CRIMPED SPIGOT					
PRODUCT		HEIGHT	WEIGHT	PACKAGING	
CODE	DESCRIPTION	METRES	KG	QTY	TYPE
01.01.050.00	Standard (1 Ring)	0.5	3.31	270	Rack
01.01.100.00	Standard (2 Ring)	1.0	5.62	180	Rack
01.01.150.00	Standard (3 Ring)	1.5	7.94	90	Rack
01.01.200.00	Standard (4 Ring)	2.0	10.32	90	Rack
01.01.250.00	Standard (5 Ring)	2.5	12.03	90	Rack
01.01.300.00	Standard (6 Ring)	3.0	14.99	90	Rack
01.01.400.00	Standard (8 Ring)	4.0	19.77	90	Rack



STANDARD WITH HANGING SPIGOT

The Standard with Hanging Spigot is a vertical member of Ringlock scaffolding. The Standard provides the vertical support for suspended scaffolding.

STANDARD WITH HANGING SPIGOT					
PRODUCT		HEIGHT	WEIGHT	PACKAGING	
CODE	DESCRIPTION	METRES	KG	QTY	TYPE
01.02.050.00	Standard (1 Ring)	0.5	2.24	270	Rack
01.02.100.00	Standard (2 Ring)	1.0	6.78	180	Rack
01.02.150.00	Standard (3 Ring)	1.5	8.76	90	Rack
01.02.200.00	Standard (4 Ring)	2.0	11.00	90	Rack
01.02.250.00	Standard (5 Ring)	2.5	13.90	90	Rack
01.02.300.00	Standard (6 Ring)	3.0	15.63	90	Rack
01.02.400.50	Standard (8 Ring)	4.0	19.96	90	Rack
35.01.000.00	Spigot for Hanging Scaffold	N/A	1.20	750	Rack + Insert



Note: Spigot supplied separately

RINGLOCK

Ledgers

LEDGER O-TYPE

The Ledger O-Type is the horizontal member of Ringlock scaffolding. They provide horizontal support for Ringlock planks. Ledgers can also be used as mid rail and top or hand Guardrail.

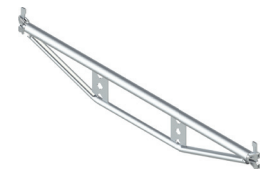
LEDGER O-TYPE					
PRODUCTS		LENGTH	WEIGHT	PACKAGING	
CODE	DESCRIPTION	METRES	KG	QTY	TYPE
01.03.015.00	Ledger O-Type	0.15	1.17	300	Rack
01.03.039.50	Ledger O-Type	0.39	2.14	300	Rack
01.03.073.50	Ledger O-Type	0.73	3.39	300	Rack
01.03.104.50	Ledger O-Type	1.04	4.31	200	Rack
01.03.109.00	Ledger O-Type	1.09	4.70	200	Rack
01.03.140.50	Ledger O-Type	1.40	5.54	200	Rack
01.03.157.00	Ledger O-Type	1.57	6.45	200	Rack
01.03.207.50	Ledger O-Type	2.07	8.19	150	Rack
01.03.257.50	Ledger O-Type	2.57	9.91	150	Rack
01.03.307.50	Ledger O-Type	3.07	11.67	150	Rack



TRUSS LEDGER O-TYPE

Truss Ledgers O-Type have been value engineered to enable higher service loads to the scaffold than could be applied using traditional Ledgers. The reinforcing tube and stiffener plates support the top tube and provide strength while maintaining lightness.

TRUSS LEDGER O-TYPE					
PRODUCT		LENGTH	WEIGHT	PACKAGING	
CODE	DESCRIPTION	METRES	KG	QTY	TYPE
01.18.140.00	Truss Ledger O-Type	1.40	9.38	63	Rack
01.18.157.00	Truss Ledger O-Type	1.57	10.10	63	Rack
01.18.207.50	Truss Ledger O-Type	2.07	13.91	63	Rack
01.18.257.50	Truss Ledger O-Type	2.57	16.68	63	Rack
01.18.307.50	Truss Ledger O-Type	3.07	21.26	63	Rack



RINGLOCK

Ledgers/Transoms U-Type

LEDGER U-TYPE

The Ledger U-Type is the horizontal member of Ringlock scaffolding. They provide horizontal support for Ringlock Planks.

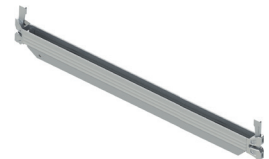
U LEDGER/TRANSOM					
PRODUCT		LENGTH	WEIGHT	PACKAGING	
CODE	DESCRIPTION	METRES	KG	QTY	TYPE
01.04.039.50	Ledger U-Type	0.39	1.99	300	Rack
01.04.073.50	Ledger U-Type	0.73	3.18	300	Rack



REINFORCED LEDGER/TRANSOM U-TYPE

The Reinforced Ledger is a reinforced horizontal member of the Ringlock Scaffolding. They provide support for Ringlock Planks at longer spans between verticals.

U REINFORCED LEDGER/TRANSOM					
PRODUCT		LENGTH	WEIGHT	PACKAGING	
CODE	DESCRIPTION	METRES	KG	QTY	TYPE
01.05.109.50	Ledger U-Type—Reinforced	1.09	6.48	110	Rack
01.05.140.50	Ledger U-Type—Reinforced	1.40	8.21	110	Rack
01.05.157.50	Ledger U-Type—Reinforced	1.57	9.30	110	Rack



TRUSS LEDGER/TRANSOM U-TYPE

Truss Ledgers O-Type have been value engineered to enable higher service loads to the scaffold than could be applied using traditional Ledgers.

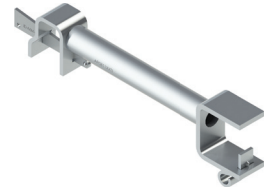
U TRUSS LEDGER/TRANSOM					
PRODUCT		LENGTH	WEIGHT	PACKAGING	
CODE	DESCRIPTION	METRES	KG	QTY	TYPE
01.19.140.50	Truss Ledger U-Type	1.40	9.09	70	Rack
01.19.157.50	Truss Ledger U-Type	1.57	10.84	70	Rack
01.19.207.50	Truss Ledger U-Type	2.07	14.40	70	Rack
01.19.257.50	Truss Ledger U-Type	2.57	17.74	70	Rack
01.19.307.50	Truss Ledger U-Type	3.07	21.49	70	Rack



LEDGER TO PLANK TRANSOM O-TYPE

The Ledger to Plank Transom O-Type is used where a ladder access opening is required on one side of the access platform.

LEDGER TO PLANK TRANSOM					
PRODUCT		LENGTH	WEIGHT	PACKAGING	
CODE	DESCRIPTION	METRES	KG	QTY	TYPE
01.23.320.50	Ledger to Plank—1 Plank	0.32	3.46	200	Rack + Insert
01.23.640.50	Ledger to Plank—2 Plank	0.64	4.31	200	Rack
01.23.960.50	Ledger to Plank—3 Plank	0.96	5.62	200	Rack



PLANK TO PLANK TRANSOM O-TYPE

Plank to Plank Transoms O-Type are used when an opening is required in the middle of a platform, for example a column or pipework that may pass through the working platform.

PLANK TO PLANK TRANSOM					
PRODUCT		LENGTH	WEIGHT	PACKAGING	
CODE	DESCRIPTION	METRES	KG	QTY	TYPE
01.24.320.50	Plank to Plank—1 Plank	0.32	3.69	170	Rack + Insert
01.24.640.50	Plank to Plank—2 Plank	0.64	4.69	200	Rack
01.24.960.50	Plank to Plank—3 Plank	0.96	5.59	200	Rack



MID TRANSOM O-TYPE

The Mid Transom is designed to create a Transom at the plank level anywhere inside of a bay by straddling the outer Ledgers/ Transoms of a bay.

MID TRANSOM O-TYPE					
PRODUCT		LENGTH	WEIGHT	PACKAGING	
CODE	DESCRIPTION	METRES	KG	QTY	TYPE
01.20.039.50	Mid Transom	0.39	2.73	160	Rack
01.20.073.50	Mid Transom	0.73	3.91	160	Rack
01.20.104.50	Mid Transom	1.04	4.96	160	Rack
01.20.109.00	Mid Transom	1.09	5.14	160	Rack
01.20.140.50	Mid Transom	1.40	6.28	160	Rack
01.20.157.00	Mid Transom	1.57	6.82	160	Rack
01.20.207.50	Mid Transom	2.07	8.49	160	Rack
01.20.257.50	Mid Transom	2.57	10.15	160	Rack
01.20.307.50	Mid Transom	3.07	12.12	160	Rack



RINGLOCK

U Intermediate Transoms

LEDGER TO PLANK TRANSOM U-TYPE

The Ledger to Plank Transom U-Type is used where a ladder access opening is required on one side of the access platform.

U LEDGER TO PLANK TRANSOM

PRODUCT		LENGTH	WEIGHT	PACKAGING	
CODE	DESCRIPTION	METRES	KG	QTY	TYPE
01.25.320.50	U-Type (Ledger to Plank) —1 Plank	0.32	3.71	170	Cage
01.25.640.50	U-Type (Ledger to Plank) —2 Plank	0.64	4.71	200	Rack
01.25.960.50	U-Type (Ledger to Plank) —3 Plank	0.96	5.77	200	Rack



PLANK TO PLANK TRANSOM U-TYPE

Plank to Plank Transoms U-Type are used when an opening is required in the middle of a platform, for example a column or pipework that may pass through the working platform.

U PLANK TO PLANK TRANSOM

PRODUCT		LENGTH	WEIGHT	PACKAGING	
CODE	DESCRIPTION	METRES	KG	QTY	TYPE
01.26.320.50	U-Type (Plank to Plank) —1 Plank	0.32	3.96	170	Cage
01.26.640.50	U-Type (Plank to Plank) —2 Plank	0.64	5.13	200	Cage
01.26.960.50	U-Type (Plank to Plank) —3 Plank	0.96	6.37	200	Cage



RINGLOCK

Brackets

SIDE/HOP-UP BRACKET O-TYPE

Side/Hop-Up Brackets are used to extend the working platform closer to the building structure in cases where the main scaffold cannot be erected directly next to the working face.

SIDE BRACKET O-TYPE					
PRODUCT		WIDTH	WEIGHT	PACKAGING	
CODE	DESCRIPTION	METRES	KG	QTY	TYPE
01.11.039.50	Side Bracket O-Type	0.39	4.94	110	Rack + Insert
01.11.073.50	Side Bracket O-Type	0.73	7.46	50	Rack



SIDE/CONSOLE BRACKET O-TYPE

Side/Console Brackets are used at the edge of a scaffolding to extend the or widen the working platform.

SIDE/CONSOLE BRACKET O-TYPE					
PRODUCT		WIDTH	WEIGHT	PACKAGING	
CODE	DESCRIPTION	METRES	KG	QTY	TYPE
01.12.109.00	Side/Console Bracket O-Type	1.09	12.74	24	Rack



SIDE/HOP UP BRACKET U-TYPE

SIDE BRACKET U-TYPE					
PRODUCT		WIDTH	WEIGHT	PACKAGING	
CODE	DESCRIPTION	METRES	KG	QTY	TYPE
01.13.039.50	Side Bracket U-Type	0.39	4.83	100	Rack + Insert
01.13.073.50	Side Bracket U-Type	0.73	7.47	50	Rack



SIDE/CONSOLE BRACKET U-TYPE

SIDE/CONSOLE BRACKET U-TYPE					
PRODUCT		WIDTH	WEIGHT	PACKAGING	
CODE	DESCRIPTION	METRES	KG	QTY	TYPE
01.14.109.50	Side/Console Bracket U-Type	1.09	12.39	26	Rack



RINGLOCK

Bay Braces

BAY BRACES

Bay Braces are used for the lateral bracing of Ringlock scaffolds. They can also be used as compression and tension members for cantilevers/spurs, transmitting loads back into the main scaffold structure.

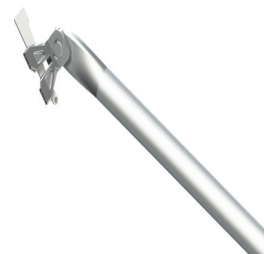
DIAGONAL BAY BRACE (FACADE BRACE FOR 2.0m LIFT HEIGHT)

PRODUCT		BAY LENGTH	WEIGHT	PACKAGING	
CODE	DESCRIPTION	METRES	KG	QTY	TYPE
01.06.073.50	Bay Brace 2.0m Lift	0.73	7.55	150	Rack
01.06.104.50	Bay Brace 2.0m Lift	1.04	7.83	150	Rack
01.06.109.00	Bay Brace 2.0m Lift	1.09	7.86	150	Rack
01.06.140.50	Bay Brace 2.0m Lift	1.40	8.31	150	Rack
01.06.157.00	Bay Brace 2.0m Lift	1.57	8.54	150	Rack
01.06.207.50	Bay Brace 2.0m Lift	2.07	9.45	150	Rack
01.06.257.50	Bay Brace 2.0m Lift	2.57	10.46	150	Rack
01.06.307.50	Bay Brace 2.0m Lift	3.07	11.57	150	Rack



DIAGONAL BAY BRACE (FACADE BRACE FOR 1.5m LIFT HEIGHT)

PRODUCT		BAY LENGTH	WEIGHT	PACKAGING	
CODE	DESCRIPTION	METRES	KG	QTY	TYPE
01.07.073.50	Bay Brace 1.5m Lift	0.73	5.90	150	Rack
01.07.104.50	Bay Brace 1.5m Lift	1.04	6.20	150	Rack
01.07.109.00	Bay Brace 1.5m Lift	1.09	6.85	150	Rack
01.07.140.50	Bay Brace 1.5m Lift	1.40	6.70	150	Rack
01.07.157.00	Bay Brace 1.5m Lift	1.57	7.68	150	Rack
01.07.207.50	Bay Brace 1.5m Lift	2.07	8.10	150	Rack
01.07.257.50	Bay Brace 1.5m Lift	2.57	9.20	150	Rack
01.07.307.50	Bay Brace 1.5m Lift	3.07	10.30	150	Rack



DIAGONAL BAY BRACE (FACADE BRACE FOR 1.0m LIFT HEIGHT)

PRODUCT		BAY LENGTH	WEIGHT	PACKAGING	
CODE	DESCRIPTION	METRES	KG	QTY	TYPE
01.08.073.50	Bay Brace 1.0m Lift	0.73	4.74	150	Rack
01.08.104.50	Bay Brace 1.0m Lift	1.04	5.21	150	Rack
01.08.109.00	Bay Brace 1.0m Lift	1.09	5.29	150	Rack
01.08.140.50	Bay Brace 1.0m Lift	1.40	5.21	150	Rack
01.08.157.00	Bay Brace 1.0m Lift	1.57	6.24	150	Rack
01.08.207.50	Bay Brace 1.0m Lift	2.07	7.39	150	Rack
01.08.257.50	Bay Brace 1.0m Lift	2.57	8.59	150	Rack
01.08.307.50	Bay Brace 1.0m Lift	3.07	9.82	150	Rack



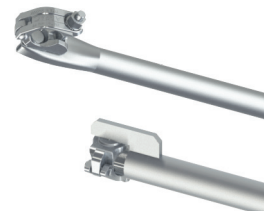
RINGLOCK

Telescopic Braces

TELESCOPIC BRACES

Telescopic Braces are used for the lateral bracing of Ringlock scaffolds. They can also be used as compression and tension members for cantilevers/spurs. Telescopic Braces are comprised of an inner and outer tube connected together using a drop-forged half coupler. Telescopic Braces connect to Ringlock Standards using Swivel Half Couplers.

TELESCOPIC BRACES						
PRODUCT		RANGE	WEIGHT	PACKAGING		
CODE	DESCRIPTION	METRES	KG	QTY	TYPE	
01.36.001.50	Telescopic Brace—Long	2.6-4.3	26.45	150	Rack	
01.36.002.50	Telescopic Brace— Medium	1.56-2.38	11.28	150	Rack	
01.36.003.50	Telescopic Brace—Short	0.94-1.27	7.20	150	Rack	



RINGLOCK

Girders/Spigot Adapters

LATTICE GIRDER, NO SPIGOT 0.5m

Lattice Girders are a horizontal member of Ringlock scaffolding that allow for bridging over large spans of 5.14m to 7.71m.

LATTICE GIRDER, NO SPIGOT 0.5m					
PRODUCT		LENGTH	WEIGHT	PACKAGING	
CODE	DESCRIPTION	METRES	KG	QTY	TYPE
01.16.257.50	Lattice Girder, No Spigot 0.5m	2.57	28.00	20	Bundle
01.16.307.50	Lattice Girder, No Spigot 0.5m	3.07	32.00	20	Bundle
01.16.514.50	Lattice Girder, No Spigot 0.5m	5.14	52.00	20	Bundle
01.16.614.50	Lattice Girder, No Spigot 0.5m	6.14	64.00	20	Bundle
01.16.771.50	Lattice Girder, No Spigot 0.5m	7.71	82.00	20	Bundle



SPIGOT ADAPTER CLAMP FOR GIRDERS

Spigot Adapter Clamps allow the connection of Ringlock Standards at intermediate locations along the length of O-Type Ledgers, Truss Ledgers and Girders.

LATTICE GIRDER SPIGOT ADAPTER CLAMP				
PRODUCT		WEIGHT	PACKAGING	
CODE	DESCRIPTION	KG	QTY	TYPE
05.08.200.50	Spigot Adaptor. Clamp for Girders	1.80	500	Rack + Insert

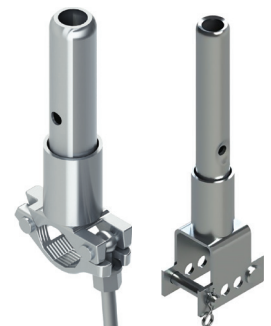
***Product Available in a Nut Size of 21mm (UK), 22mm (7/8" N. America) and 23mm (AUS)*



SPIGOT ADAPTER CLAMP

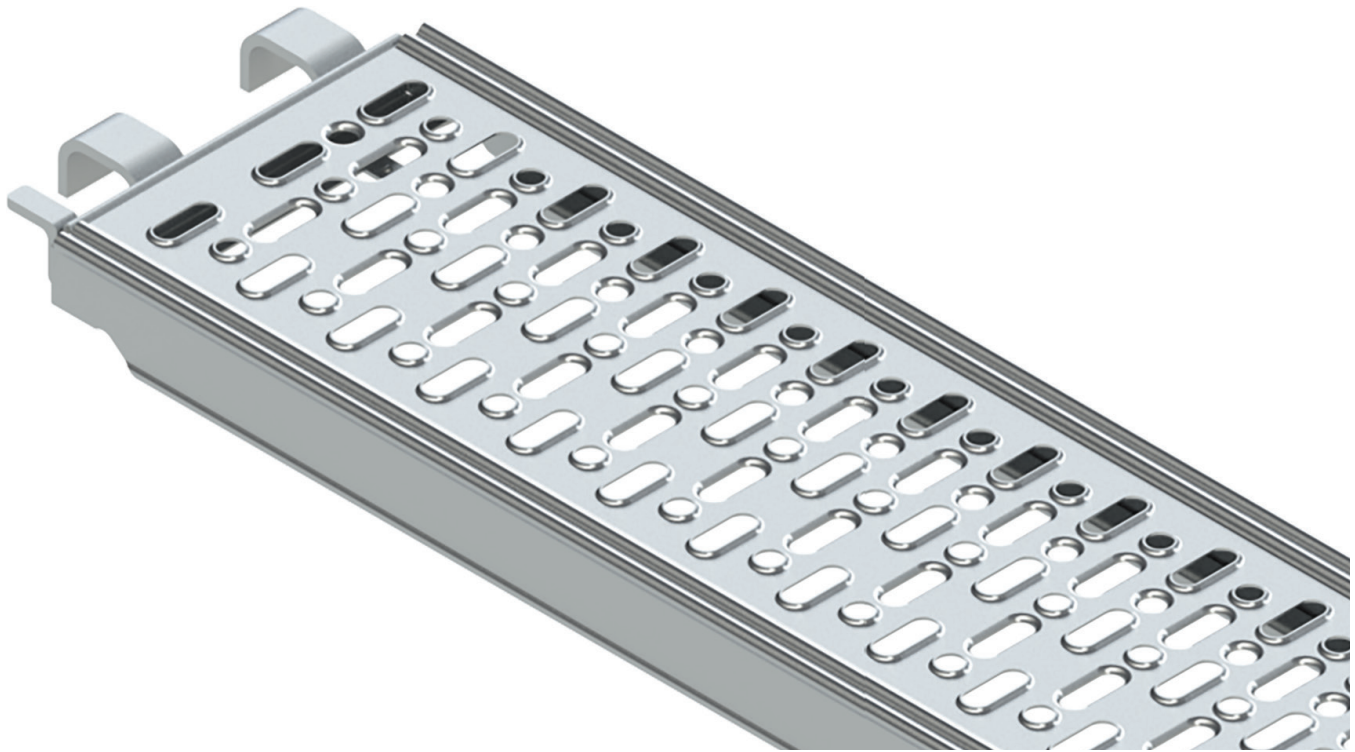
SPIGOT ADAPTER CLAMP				
PRODUCT		WEIGHT	PACKAGING	
CODE	DESCRIPTION	KG	QTY	TYPE
05.03.200.50	Spigot Adapter Clamp	1.86	650	Rack + Insert
05.09.200.50	U Spigot Adapter Clamp	1.80	500	Rack + Insert

***Product Available in a Nut Size of 21mm (UK), 22mm (7/8" N. America) and 23mm (AUS)*



WORK PLATFORMS

Introduction



WORK PLATFORMS

AT-PAC provides a range of work platform products for its Ringlock Scaffold. These include Modular Steel Planks 320mm and 190mm wide, Infill Planks 190mm wide, Gap Filler Planks 320mm wide and Gap Filler Plates 320mm wide. All work platforms products are available in the typical Ringlock Ledger Lengths.

Customers and users can rest assured that, no matter which product they choose, all AT-PAC work platform products are manufactured to stringent quality specifications and go through rigorous testing and checking before being shipped.

AT-PAC work platforms provide a strong, safe working surface no matter what the application.

AT-PAC backs its products with its proprietary Quality Assurance System. This program is designed to ensure that each and every AT-PAC work platform product has been manufactured correctly and functions and performs as it should. This involves continual factory auditing, monitoring, testing, in-process inspections and pre-shipment inspections.

WORK PLATFORMS

Planks

STEEL PLANK O-TYPE 320mm

Steel Planks are used to form the working platform. The number of Steel Planks used determines the width of the platform. They span the length of the bay and hook onto the supporting Ledger/Transom. There is an anti-lift system to prevent uplift in adverse weather conditions.

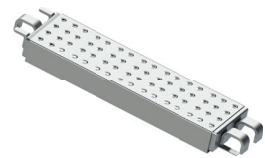
STEEL PLANK O-TYPE 320mm						
PRODUCT		LENGTH	WEIGHT	PACKAGING		
CODE	DESCRIPTION	METRES	KG	QTY	TYPE	
08.03.073.50	Steel Plank 320mm	0.73	7.20	75	Rack	
08.03.109.50	Steel Plank 320mm	1.09	9.63	75	Rack	
08.03.140.50	Steel Plank 320mm	1.40	11.75	75	Rack	
08.03.157.50	Steel Plank 320mm	1.57	12.94	75	Rack	
08.03.207.50	Steel Plank 320mm	2.07	16.30	75	Rack	
08.03.257.50	Steel Plank 320mm	2.57	19.88	75	Rack	
08.03.307.50	Steel Plank 320mm	3.07	23.25	75	Rack	



STEEL PLANK O-TYPE 190mm

Steel Planks are used to form the working platform. The number of Steel Planks used determines the width of the platform. They span the length of the bay and hook onto the supporting Ledger/Transom. There is an anti-lift system to prevent uplift in adverse weather conditions.

STEEL PLANK O-TYPE 190mm						
PRODUCT		LENGTH	WEIGHT	PACKAGING		
CODE	DESCRIPTION	METRES	KG	QTY	TYPE	
08.01.073.50	Steel Plank 190mm	0.73	5.22	50	Rack	
08.01.109.50	Steel Plank 190mm	1.09	7.09	50	Rack	
08.01.140.50	Steel Plank 190mm	1.40	8.87	50	Rack	
08.01.157.50	Steel Plank 190mm	1.57	9.59	50	Rack	
08.01.207.50	Steel Plank 190mm	2.07	12.12	50	Rack	
08.01.257.50	Steel Plank 190mm	2.57	14.63	50	Rack	
08.01.307.50	Steel Plank 190mm	3.07	17.37	50	Rack	



WORK PLATFORMS

Planks

STEEL PLANK U-TYPE

U-Type Steel Plank connect to U-Ledgers/ Transoms instead of the O-Type.

STEEL PLANK U-TYPE 320mm

PRODUCT		LENGTH	WEIGHT	PACKAGING	
CODE	DESCRIPTION	METRES	KG	QTY	TYPE
08.05.073.50	Steel Plank 320mm	0.73	6.78	75	Rack
08.05.109.50	Steel Plank 320mm	1.09	8.74	75	Rack
08.05.140.50	Steel Plank 320mm	1.40	10.86	75	Rack
08.05.157.50	Steel Plank 320mm	1.57	12.07	75	Rack
08.05.207.50	Steel Plank 320mm	2.07	15.25	75	Rack
08.05.257.50	Steel Plank 320mm	2.57	19.40	75	Rack
08.05.307.50	Steel Plank 320mm	3.07	22.17	75	Rack



STEEL PLANK U-TYPE 190mm

PRODUCT		LENGTH	WEIGHT	PACKAGING	
CODE	DESCRIPTION	METRES	KG	QTY	TYPE
08.04.073.50	Steel Plank 190mm	0.73	5.16	125	Rack
08.04.109.50	Steel Plank 190mm	1.09	6.88	125	Rack
08.04.140.50	Steel Plank 190mm	1.40	8.57	125	Rack
08.04.157.50	Steel Plank 190mm	1.57	9.88	125	Rack
08.04.207.50	Steel Plank 190mm	2.07	12.52	125	Rack
08.04.257.50	Steel Plank 190mm	2.57	15.58	125	Rack
08.04.307.50	Steel Plank 190mm	3.07	18.45	125	Rack



DECK LOCK

The Deck Locks are designed to prevent the U-Type Planks from uplift and connect into slots on the underside of the U Ledger/Transom.

DECK LOCK

PRODUCT		LENGTH	WEIGHT	PACKAGING	
CODE	DESCRIPTION	METRES	KG	QTY	TYPE
08.11.073.50	Deck Lock	0.73	1.32	250	Rack
08.11.109.50	Deck Lock	1.09	1.83	250	Rack
08.11.140.50	Deck Lock	1.40	2.69	250	Rack
08.11.157.50	Deck Lock	1.57	2.65	250	Rack
08.11.207.50	Deck Lock	2.07	3.48	250	Rack
08.11.257.50	Deck Lock	2.57	4.16	250	Rack
08.11.307.50	Deck Lock	3.07	5.20	250	Rack



WORK PLATFORMS

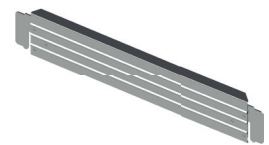
Toeboards/Infill

INTERLOCKING TOEBOARD 24mm

Interlocking Toeboards are designed to enclose the bay at the Plank level, preventing small tools, debris and other items from falling off the platform.

INTERLOCKING TOEBOARD 24mm

PRODUCT		LENGTH	WEIGHT	PACKAGING	
CODE	DESCRIPTION	METRES	KG	QTY	TYPE
08.09.073.50	Interlocking Toeboard	0.73	2.34	460	Rack
08.09.104.50	Interlocking Toeboard	1.04	3.08	230	Rack
08.09.109.50	Interlocking Toeboard	1.09	3.28	230	Rack
08.09.140.50	Interlocking Toeboard	1.40	3.97	230	Rack
08.09.157.50	Interlocking Toeboard	1.57	4.38	230	Rack
08.09.207.50	Interlocking Toeboard	2.07	5.54	230	Rack
08.09.257.50	Interlocking Toeboard	2.57	6.92	230	Rack
08.09.307.50	Interlocking Toeboard	3.07	8.22	230	Rack



TOE BOARD RETAINING CLAMP

The Toe Board Retaining Clamps are used to secure the toeboard from uplift in adverse weather conditions.

TOE BOARD RETAINING CLAMP

PRODUCTS		LENGTH	WEIGHT	PACKAGING	
CODE	DESCRIPTION	METRES	KG	QTY	TYPE
04.16.000.00	Toe Board Retaining Clamp	0.08	0.83	350	Rack+Insert

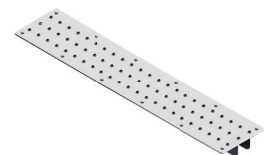


INFILL PLANK 190mm

Infill Planks are designed to fill any unwanted gaps between Planks or bays providing a continuous working platform.

INFILL PLANK 190mm

PRODUCTS		LENGTH	WEIGHT	PACKAGING	
CODE	DESCRIPTION	METRES	KG	QTY	TYPE
08.07.073.50	Infill Plank	0.73	3.37	270	Rack
08.07.109.00	Infill Plank	1.09	5.04	135	Rack
08.07.140.50	Infill Plank	1.40	6.47	135	Rack
08.07.157.00	Infill Plank	1.57	6.58	135	Rack
08.07.207.50	Infill Plank	2.07	9.13	135	Rack
08.07.257.50	Infill Plank	2.57	11.35	135	Rack
08.07.307.50	Infill Plank	3.07	13.60	135	Rack



WORK PLATFORMS

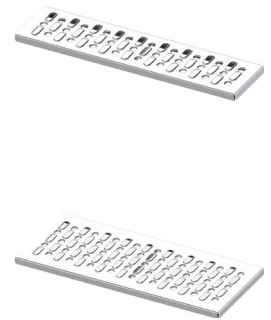
Infill

GAP FILLER PLANK

The Gap Filler Plank is designed to span small openings in the Ringlock platform or between bays.

GAP FILLER PLANK					
PRODUCT		LENGTH	WEIGHT	PACKAGING	
CODE	DESCRIPTION	METRES	KG	QTY	TYPE
08.13.075.50	320mm Gap Filler Plank	0.75	4.52	144	Rack
08.13.100.50	320mm Gap Filler Plank	1.00	5.50	72	Rack
08.13.125.50	320mm Gap Filler Plank	1.25	6.67	72	Rack
08.13.150.50	320mm Gap Filler Plank	1.50	7.74	72	Rack
08.13.175.50	320mm Gap Filler Plank	1.75	5.50	72	Rack
08.13.200.50	320mm Gap Filler Plank	2.00	10.52	72	Rack
08.14.075.50	190mm Gap Filler Plank	0.75	2.80	240	Rack
08.14.100.50	190mm Gap Filler Plank	1.00	3.50	120	Rack
08.14.125.50	190mm Gap Filler Plank	1.25	4.18	120	Rack
08.14.150.50	190mm Gap Filler Plank	1.50	4.87	120	Rack
08.14.175.50	190mm Gap Filler Plank	1.75	5.57	120	Rack
08.14.200.50	190mm Gap Filler Plank	2.00	6.27	120	Rack
35.05.000.00	Rubber Plug	N/A	0.02	N/A	

Supplied with Rubber Plug to secure platform.

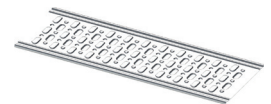


GAP FILLER PLATE

The Gap Filler Plates are designed to fill any unwanted gaps between planks or bays creating continuous working platforms.

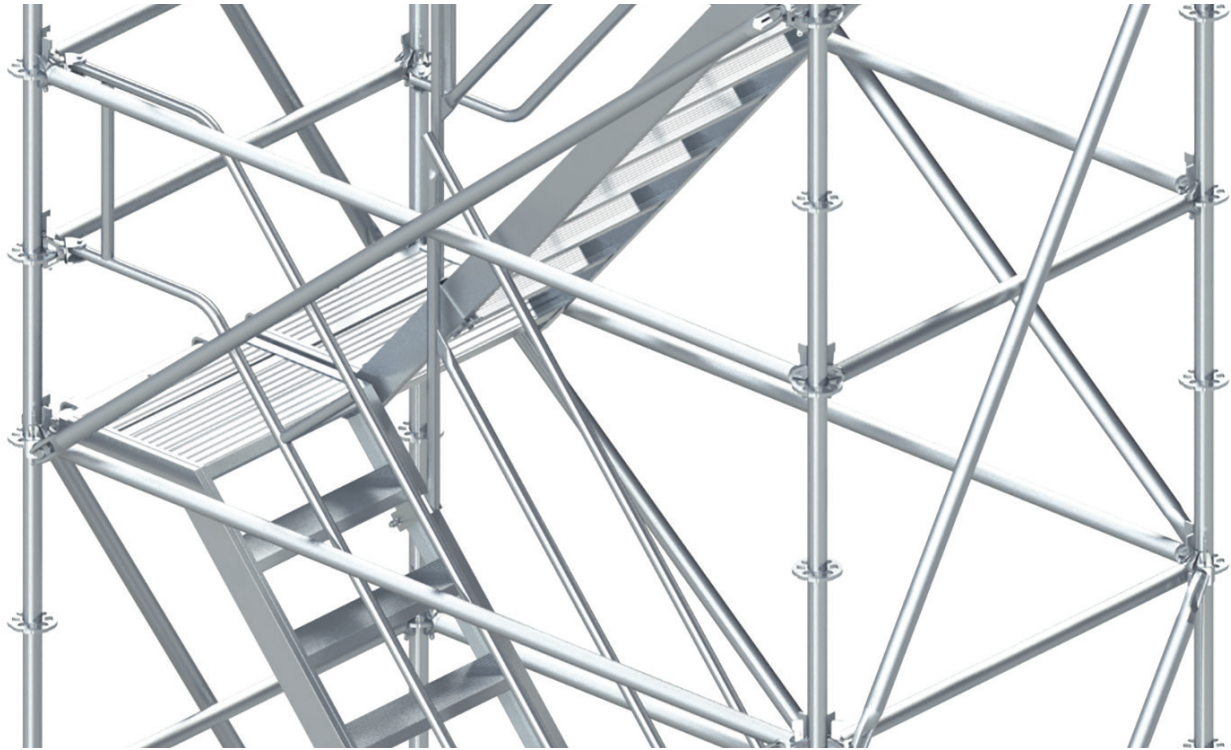
GAP FILLER PLATE					
PRODUCTS		LENGTH	WEIGHT	PACKAGING	
CODE	DESCRIPTION	METRES	KG	QTY	TYPE
08.15.073.50	Gap Filler Plate	0.73	2.20	320	Rack
08.15.104.50	Gap Filler Plate	1.04	3.28	160	Rack
08.15.109.50	Gap Filler Plate	1.09	3.47	160	Rack
08.15.140.50	Gap Filler Plate	1.40	4.58	160	Rack
08.15.157.50	Gap Filler Plate	1.57	5.19	160	Rack
08.15.207.50	Gap Filler Plate	2.07	6.97	400	TUBE Rack
08.15.257.50	Gap Filler Plate	2.57	8.44	400	TUBE Rack
08.15.307.50	Gap Filler Plate	3.07	10.55	400	TUBE Rack
35.05.000.00	Rubber Plug	N/A	0.02	N/A	

Supplied with Rubber Plug to secure platform.



ACCESS & EGRESS

Introduction



ACCESS & EGRESS

AT-PAC has developed a full complement of Access & Egress products for AT-PAC Ringlock and other applications. These products are designed and manufactured in accordance with all applicable standards and provide a level of safety that is unparalleled in the industry. This range of components include Self-closing Safety Gates, Aluminium Platforms Stair units, Ringlock Steel Stairs and Access Barriers all built to exacting quality standards and individually checked for compliance and function.

The 10 Leg Steel Stairs are made from separate Steel Stringers and Treads so the system can be installed where access is tight, such as complex refinery installations where pipes and other obstructions prevent large pieces of scaffolding to be used. The landings are constructed from AT-PAC Steel Planks which provide a convenient and anti-slip platform. AT-PAC Ringlock Bay Braces are used as handrails for the stairs.

AT-PAC also offers its clients their newly designed Aluminium Platform Stair units. These are complete stair units with built-in landings. The use of lightweight structural Aluminium for the stair stringers, treads and landings make these units highly manageable and easy to install. They also allow the stair towers to have only 4 legs on plan, making the system very fast and easy to erect.

ACCESS & EGRESS

Steel Stair/Aluminium Ladder Deck

STEEL STAIR STRINGER

The Stair Stringer is the diagonal member of the 10 Leg Stair System. The Stringer must be used in pairs in order to support the Stair Treads. The Stringer is used for a typical 2.0m lift height.

STAIR STRINGER					
PRODUCT		BAY LENGTH	WEIGHT	PACKAGING	
CODE	DESCRIPTION	METRES	KG	QTY	TYPE
15.01.207.00	Stair Stringer—U Type	2.07	14.90	108	Rack
15.08.207.50	Stair Stringer Right — O Type	2.07	15.50	108	Rack
15.07.207.50	Stair Stringer Left — O Type	2.07	15.50	108	Rack



Note: The O-Type Stair Stringers are handed. (**Blue** = Powder coated ledge head left hand, **Yellow** = Powder coated ledge head right hand)

STEEL STAIR TREAD

The Stair Tread is designed as the horizontal member connecting to the Stair Stringers, providing the steps of the stair system. This fits into a 1.036m (1.04m) Bay width.

STAIR TREAD					
PRODUCT		WIDTH	WEIGHT	PACKAGING	
CODE	DESCRIPTION	METRES	KG	QTY	TYPE
15.02.089.00	Stair Tread	0.89	9.19	20	Cage



ALUMINIUM LADDER HATCH DECK

The aluminium frame with Ladder Hatch Deck acts as a lightweight, extra wide Scaffold Plank which incorporates a Ladder.

LADDER HATCH DECK					
PRODUCT		LENGTH	WEIGHT	PACKAGING	
CODE	DESCRIPTION	METRES	KG	QTY	TYPE
19.02.257.50	All Aluminium Ladder Hatch Deck 2.57m x 0.64m	2.57	33.40	25	Rack



ACCESS & EGRESS

Aluminium Platform Stair

ALUMINIUM PLATFORM STAIR O-TYPE

Aluminium Stairs are complete stair units with built in landings.

Aluminium PLATFORM STAIR W/LANDING O-TYPE						
PRODUCTS		LENGTH	WEIGHT	PACKAGING		
CODE	DESCRIPTION	METRES	KG	QTY	TYPE	
16.01.257.50	Alum. Stair Platform O-Type	2.0 x 2.57	29.50	12	PALLET	
16.01.307.50	Alum. Stair Platform O-Type	2.0 x 3.07	42.00	12	PALLET	



ALUMINIUM PLATFORM STAIR GUARDRAILS

The Aluminium Stair Guardrail is used to provide a handrail on the inner side and outer side of the Aluminium Stair Platform.

ALUMINIUM STAIR INNER GUARDRAIL						
PRODUCT		LENGTH	WEIGHT	PACKAGING		
CODE	DESCRIPTION	METRES	KG	QTY	TYPE	
16.08.000.50	Alum Stair Inner Guardrail UK	2.0 x 2.57	12.19	20	Rack	

ALUMINIUM STAIR INNER EXTENDED GUARDRAIL						
PRODUCT		LENGTH	WEIGHT	PACKAGING		
CODE	DESCRIPTION	METRES	KG	QTY	TYPE	
16.05.257.50	Alum Stair Inner Extended Guardrail 2m x 2.57m	2.57	13.00	20	Rack	
16.05.307.50	Alum Stair Inner Extended Guardrail 2m x 3.07m	3.07	14.50	20	Rack	

ALUMINIUM STAIR OUTER GUARDRAIL						
PRODUCT		LENGTH	WEIGHT	PACKAGING		
CODE	DESCRIPTION	METRES	KG	QTY	TYPE	
16.06.257.50	Alum Stair Outer Guardrail 2m x 2.57m	2.57	18.50	20	Rack	
16.06.307.50	Alum Stair Outer Guardrail 2m x 3.07m	3.07	18.00	20	Rack	



ACCESS & EGRESS

Guardrail/Edge Protection

GUARDRAIL STANDARD

The Guardrail Standards are used to create openings for access & egress and the ability to attach a Safety Gate.

GUARDRAIL STANDARD					
PRODUCT		HEIGHT	WEIGHT	PACKAGING	
CODE	DESCRIPTION	METRES	KG	QTY	TYPE
01.31.163.00	Guardrail Standard	1.5	8.32	70	Rack

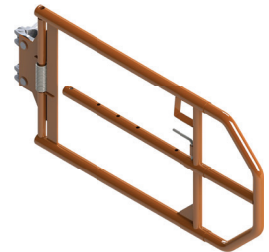


ADJUSTABLE SAFETY GATE

Adjustable Safety Gates are designed to secure an opening used for access & egress.

ADJUSTABLE SAFETY GATE					
PRODUCT		WIDTH	WEIGHT	PACKAGING	
CODE	DESCRIPTION	METRES	KG	QTY	TYPE
10.01.200.50	Adjustable Swing Gate 21mm Nut	1.0	8.20	34	Rack

***Product Available in a Nut Size of 21mm (UK), 22mm (N. America) and 23mm (AUS)*



ACCESS BARRIER

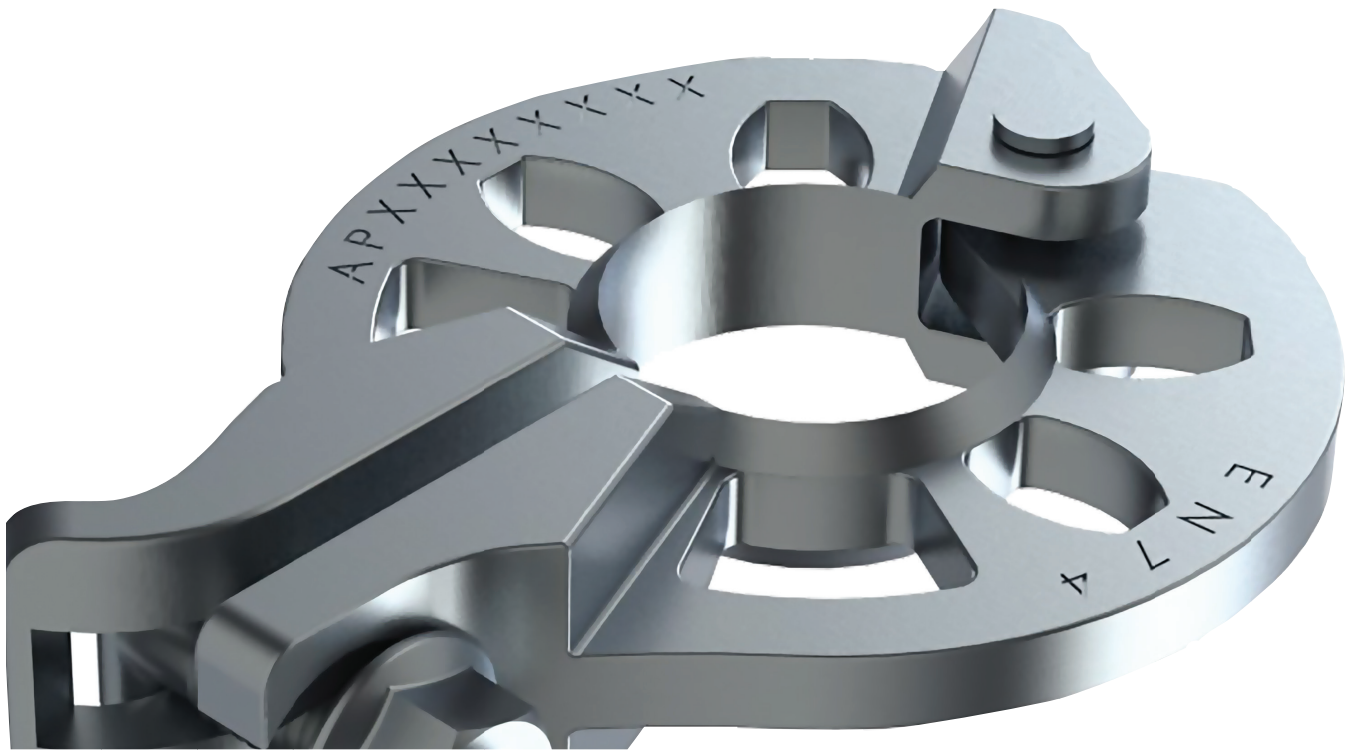
The Access Barriers are designed to be used as a guardrail at the top and bottom of the Aluminum 4 leg Platform Stairs and can also be used to provide barriers around gaps in platforms for ladder access.

ACCESS BARRIER					
PRODUCT		WIDTH	WEIGHT	PACKAGING	
CODE	DESCRIPTION	METRES	KG	QTY	TYPE
10.06.700.50	Access Barrier	0.7	11	26	Rack



ACCESSORIES

Introduction



INTRODUCTION

AT-PAC has a continually growing list of accessories for Ringlock System Scaffold. These accessories enhance Ringlock capabilities for simple or complicated scaffold structures. AT-PAC's Engineering department has a wealth of experience when it comes to designing and manufacturing components. On request from customers AT-PAC can also design, manufacture and supply special components.

These special components are taken from concept to completion in a timely manner to ensure customers are able to maintain productivity at all times. All components are analysed by Professional Engineers and tested via recognised test laboratories, globally.

The accessory range of products include Rosette Coupler, Adapter Clamps, Leg Locks and Loading Bays to name a few.

AT-PAC's Engineering department adopts the latest 3d design software and 3d printing capabilities in order to develop new products/ accessories. This strong emphasis on design, analysis and testing brings AT-PAC to the forefront of design development within the scaffolding industry.

ACCESSORIES

Clamps/Leg Lock

ROSETTE CLAMP

The Rosette Clamp is used to add a rosette at any point on a vertical Standard or tube.

ROSETTE CLAMP					
PRODUCT		WEIGHT	PACKAGING		
CODE	DESCRIPTION	KG	QTY	TYPE	
01.30.000.50	Rosette Clamp (T-Bolt)	1.19	750	Rack + Insert	

***Product Available in a Nut Size of 21mm (UK), 22mm (7/8" N. America) and 23mm (AUS)*

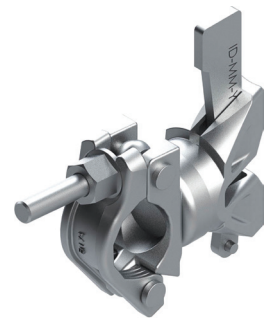


SWIVEL ADAPTER CLAMP

The Swivel Adapter Clamp is designed to easily join a scaffold tube to the rosette of a Ringlock Scaffold producing a variety of angles.

SWIVEL ADAPTER CLAMP					
PRODUCT		WEIGHT	PACKAGING		
CODE	DESCRIPTION	KG	QTY	TYPE	
05.02.200.50	Swivel Adapter Clamp	1.60	650	Rack + Insert	

***Product Available in a Nut Size of 21mm (UK), 22mm (7/8" N. America) and 23mm (AUS)*

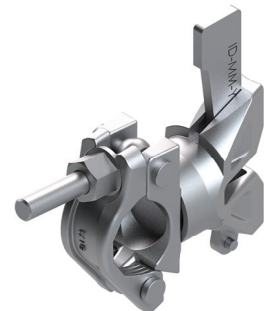


RIGHT ANGLE ADAPTER CLAMP

The Right Angle Adapter Clamp is designed to easily join a scaffold tube directly to the Ringlock standard creating 90 degree angles.

RIGHT ANGLE ADAPTER CLAMP					
PRODUCT		WEIGHT	PACKAGING		
CODE	DESCRIPTION	KG	QTY	TYPE	
05.01.200.50	Right Angle Adapter Clamp	1.56	650	Rack + Insert	

***Product Available in a Nut Size of 21mm (UK), 22mm (7/8" N. America) and 23mm (AUS)*



LEG LOCK (SUSPENDED SCAFFOLD)

The Leg Lock, used in pairs, are designed to attach to the bottom Rosette of the top Standard and to the top Rosette of the bottom Standard. This joins the standards together in preparation for suspended scaffold applications.

LEG LOCK (SUSPENDED SCAFFOLD)					
PRODUCT		HEIGHT	WEIGHT	PACKAGING	
CODE	DESCRIPTION	METRES	KG	QTY	TYPE
01.28.000.00	Leg Lock (Suspended Scaffold)	0.50	3.66	268	Rack



ACCESSORIES

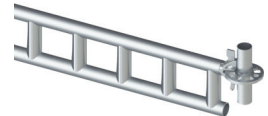
Loading Tower Components

LOADING TOWER TRANSOM O-TYPE

The Loading Tower Transom is designed to support very high loads that act on Loading Towers.

LOADING TOWER TRANSOM O-TYPE					
PRODUCT		LENGTH	WEIGHT	PACKAGING	
CODE	DESCRIPTION	METRES	KG	QTY	TYPE
01.38.307.50	Loading Tower Transom O-Type	3.07	32	55	Rack

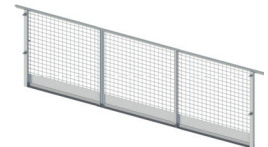
***Loading bay uses 2 of these transoms front and back with a maximum bay size of 3.072 • 2.072*



LOADING TOWER GATE

The Loading Tower Gate is the front of the Loading Bay which is supported using the Loading Tower Lifting Arms.

LOADING TOWER GATE					
PRODUCT		WIDTH	WEIGHT	PACKAGING	
CODE	DESCRIPTION	METRES	KG	QTY	TYPE
01.39.307.50	Loading Tower Gate	3.07	40	20	Rack



LOADING TOWER LIFTING ARM

The Loading Tower Lifting Arms are the supporting structure for the Loading Bay Gate and Rear Guardrail. The arms are attached using the Fulcrum Coupler.

LOADING TOWER LIFTING ARM					
PRODUCT		LENGTH	WEIGHT	PACKAGING	
CODE	DESCRIPTION	METRES	KG	QTY	TYPE
01.40.001.50	Loading Tower Lifting Arm	3.07	22.50	28	Rack
01.40.002.50	Loading Bay Fulcrum Coupler	0.30	3.00	300	Rack

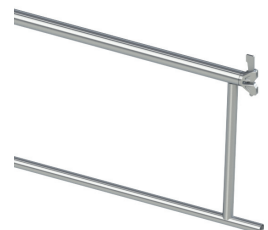
***Product Available in a Nut Size of 21mm (UK), 22mm (N. America) and 23mm (AUS)*



LOADING TOWER REAR GUARDRAIL

The Loading Tower Rear Guardrail connects to the Lifting arms and creates a Guardrail when the Loading Gate is open.

REAR GUARDRAIL					
PRODUCT		LENGTH	WEIGHT	PACKAGING	
CODE	DESCRIPTION	METRES	KG	QTY	TYPE
01.40.003.50	Rear Guardrail	3.07	16.91	23	Rack



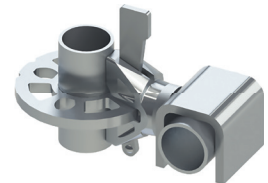
ACCESSORIES

Miscellaneous Items

RETURN LEDGER HOOK

The Return Ledger Hook is designed to connect to the Ringlock Rosette and Hook over anywhere along the length of a Ringlock Ledger.

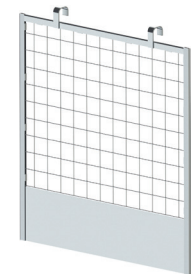
RETURN LEDGER HOOK					
PRODUCT		WEIGHT	PACKAGING		
CODE	DESCRIPTION	KG	QTY	TYPE	
01.41.000.50	Return Ledger Hook	1	950	Rack	



BRICKGUARD PANEL

Brickguard Panels secure to the top Guardrail Ledgers to provide protection from falling debris, the panel has a built-in Toeboard.

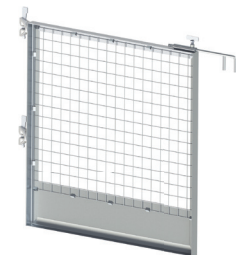
BRICKGUARD PANEL					
PRODUCT		LENGTH	WEIGHT	PACKAGING	
CODE	DESCRIPTION	METRES	KG	QTY	TYPE
01.42.970.50	Brickguard Panel	0.97m	9	14	Rack



RETURN GUARDRAIL FRAME

The Return Guardrail Frame secures to Ringlock Rosettes and Hooks onto Ringlock Ledgers, this is specifically useful when creating flypast return corners or creating edge protection for circular scaffolds.

RETURN GUARDRAIL FRAME					
PRODUCT		RANGE	WEIGHT	PACKAGING	
CODE	DESCRIPTION	METRES	KG	QTY	TYPE
10.05.109.50	Return Guardrail Frame	1.09-1.11	16.5	14	Rack



ACCESSORIES

Pins/Storage

PIG TAIL PIN

The Pig Tail Pin is designed to lock two Standards together to resist uplift.

PIG TAIL PIN					
PRODUCT		WEIGHT	PACKAGING		
CODE	DESCRIPTION	KG	QTY	TYPE	
35.02.000.00	Pig Tail Pin	0.11	500	Bag	



TOGGLE PIN

The Toggle Locking Pin is designed to lock two Standards together to resist uplift.

TOGGLE PIN					
PRODUCT		WEIGHT	PACKAGING		
CODE	DESCRIPTION	KG	QTY	TYPE	
35.03.000.00	Toggle Pin	0.06	1000	Bag	



SCAFFOLD RACK

The Scaffold Rack is designed for storage of larger items such as Standards, Ledgers, Steel Plank, etc.

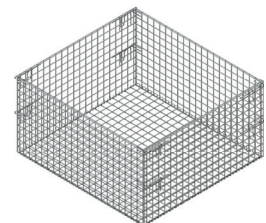
SCAFFOLD RACK					
PRODUCT		HEIGHT/DEPTH	WEIGHT	PACKAGING	
CODE	DESCRIPTION	METRES	KG	QTY	TYPE
99.02.000.00	Scaffold Rack	0.77 x 1.1	45.61	1	Rack



SCAFFOLD CAGE INSERT

The Scaffold Cage Insert is designed to fit into the storage rack, to create the Basket for storage of smaller scaffold items such as clamps and accessories.

SCAFFOLD CAGE INSERT					
PRODUCT		HEIGHT/DEPTH	WEIGHT	PACKAGING	
CODE	DESCRIPTION	METRES	KG	QTY	TYPE
99.01.000.00	Scaffold Cage Insert	0.55 x 1.0	29.96	1	Insert





DISCLAIMER

DISCLAIMER

Whilst AT-PAC and its suppliers have taken every reasonable effort to ensure the information contained within this publication is correct and complete at the time of printing, you should be aware that there will be periodical changes and AT-PAC does not accept any liability for any inconvenience, loss or damage caused as a result of any inaccuracy or omission within this publication.

Changes are periodically made to the information herein, and AT-PAC reserves the right to make improvements or changes to the content of this document at any time without notice.

Copyright © 2016 AT-PAC Ltd. All Rights Reserved. info@at-pac.com.



COMPLETE SCAFFOLDING SOLUTIONS



GLOBAL CORPORATE OFFICE:

10904 Crabapple Road | Roswell, GA | 30075 | USA
 Main: 678.505.3957 | Fax: 866.720.3307 | General Email: info@at-pac.com

ADDITIONAL LOCATIONS:

GLASGOW
 +44 (0)12 3628 0120

LEEDS
 +44 (0)19 7767 0510

LONDON
 +44 (0)20 8310 3559

Atlanta, GA, USA
 Baton Rouge, LA, USA
 Houston, TX, USA
 Los Angeles, CA, USA

Columbus, OH, USA
 Edmonton, AB, Canada
 Toronto, ON, Canada
 Antofagasta, CL

Concepcion, CL
 Santiago, CL
 Brisbane, QLD AUS
 Perth, West AUS



2016 AT-PAC RINGLOCK
PRODUCT CATALOGUE

UNITED KINGDOM

TABLE OF CONTENTS

INTRODUCTION	4
INTRODUCTION TO AT-PAC	4
RINGLOCK QUALITY FACTORS	5
OVERVIEW	5
PRODUCT TRACEABILITY	6
RINGLOCK NODE CONNECTION	7
COMPONENT IDENTIFICATION	8
COLOUR CODED COMPONENTS.....	9
RINGLOCK	10
BASE	
SCREWJACK / BASE JACK	10
SWIVELJACK	10
CASTOR 0.3M.....	10
STARTER / BASE COLLAR.....	11
ADAPTER FOR 0.3M CASTOR	11
STANDARDS	
STANDARD WITH CRIMPED SPIGOT.....	12
LEDGERS	
LEDGER O-TYPE	13
TRUSS LEDGER O-TYPE	13
LEDGER U-TYPE	14
TRANSOMS	
LEDGER TO PLANK TRANSOM O-TYPE	15
PLANK TO PLANK TRANSOM O-TYPE	15
MID TRANSOM O-TYPE	15
LEDGER TO PLANK TRANSOM U-TYPE	16
PLANK TO PLANK TRANSOM U-TYPE	16
BRACKETS	
SIDE/HOP-UP BRACKET O-TYPE	17
SIDE/CONSOLE BRACKET O-TYPE	17
SIDE/HOP UP BRACKET U-TYPE.....	17
SIDE/CONSOLE BRACKET U-TYPE	17
BRACES	
BAY BRACES	18
TELESCOPIC BRACES	19
GIRDERS/SPIGOT ADAPTERS	
LATTICE GIRDER, NO SPIGOT 0.5M	20
SPIGOT ADAPTER CLAMP FOR GIRDERS	20
SPIGOT ADAPTER CLAMP	20
WORK PLATFORMS	21
PLANKS	
STEEL PLANK O-TYPE 320MM.....	22
STEEL PLANK O-TYPE 190MM.....	22
STEEL PLANK U-TYPE.....	23
DECK LOCK.....	23
TOEBOARDS/INFILL	
INTERLOCKING TOEBOARD 24MM	24
TOE BOARD RETAINING CLAMP	24
INFILL PLANK 190MM.....	24
GAP FILLER PLANK.....	25
GAP FILLER PLATE	25

TABLE OF CONTENTS

ACCESS & EGRESS	26
STEEL STAIR	
STEEL STAIR STRINGER.....	27
STEEL STAIR TREAD.....	27
ALUMINIUM LADDER DECK	
ALUMINIUM LADDER HATCH DECK.....	27
ALUMINIUM PLATFORM STAIR O-TYPE.....	28
ALUMINIUM PLATFORM STAIR GUARDRAILS.....	28
STAIR/ACCESS	
GUARDRAIL STANDARD.....	29
ADJUSTABLE SAFETY GATE.....	29
ACCESS BARRIER.....	29
ACCESSORIES	30
CLAMPS	
ROSETTE CLAMP.....	31
SWIVEL ADAPTER CLAMP.....	31
RIGHT ANGLE ADAPTER CLAMP.....	31
LEG LOCK (SUSPENDED SCAFFOLD).....	31
LOADING TOWER COMPONENTS	
LOADING TOWER TRANSOM O-TYPE.....	32
LOADING TOWER GATE.....	32
LOADING TOWER LIFTING ARM.....	32
REAR GUARDRAIL.....	32
MISCELLANEOUS ITEMS	
RETURN LEDGER HOOK.....	33
BRICKGUARD PANEL.....	33
RETURN GUARDRAIL FRAME.....	33
PINS/STORAGE	
PIG TAIL PIN.....	34
TOGGLE PIN.....	34
SCAFFOLD CAGE INSERT.....	34
DISCLAIMER	35

INTRODUCTION

INTRODUCTION TO AT-PAC



Since 1995, AT-PAC has offered Complete Scaffolding Solutions to our strategic clients throughout the world, matching our expertise to the specific needs of our Customers. With our extensive experience in the industrial market, we specialize in Oil, Gas & Chemicals, Power & Energy and Mining & Refining projects. AT-PAC prides itself on building long term and sustainable relationships with both our customers and team members and distributes only the highest quality products by ensuring that our production process adheres to our rigorous quality assurance program and quality control.

AT-PAC has locations throughout the USA, Canada, UK, Australia and South America. We currently supply Asia-Pacific, Africa, the Middle East and beyond. Our unparalleled expertise and professionalism enables us to consistently deliver Complete Scaffolding Solutions. Our experienced customer driven team provides a seamless service from product development, supply chain management, production, quality control, delivery and local engineering support available for fast, effective solutions where required.

AT-PAC Ringlock is a modular system scaffold which enables users to quickly and efficiently erect, use and dismantle temporary work structures. The AT-PAC Ringlock system conforms to European standards BS EN12810 and BS EN12811. AT-PAC Ringlock is compliant with The National Access & Scaffolding Confederation (NASc) Code of Practice for System Scaffold.

**AT-PAC LTD. is a Non-Contracting Full Member of the
National Access & Scaffolding Confederation**



OVERVIEW

RINGLOCK QUALITY FACTORS



All of AT-PAC Euro range of Ringlock products are engineered to meet the highest quality standards based on three simple factors:

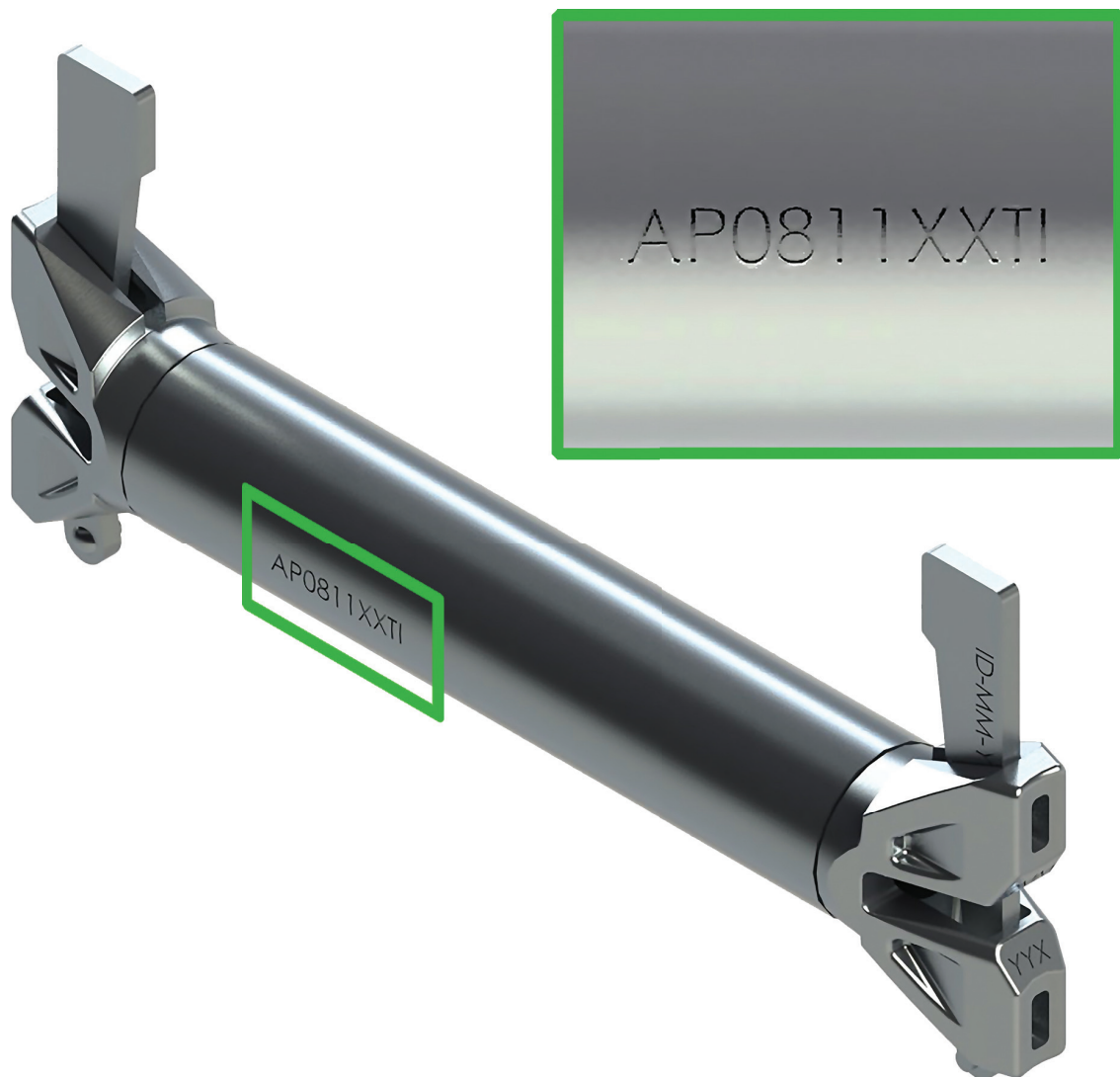
- MATERIAL*** We only use the highest quality steel in our products. Our steel is certified and tested, it conforms to or exceeds industry standards no matter the location or climate.
- FIT*** AT-PAC products are engineered with versatility and usability in mind. Our modified product designs increase efficiencies and productivity, saving your projects time and money.
- FINISH*** Where applicable, our products are finished and protected by hot-dipped zinc galvanizing. This method of finishing maximizes the utilization and extends the product life.

For additional information on Ringlock system components please consult your local AT-PAC representative.

OVERVIEW

PRODUCT TRACEABILITY

All AT-PAC components are stamped with traceability marks.



Key

Batch Number: AP 08 11 XX TI

AP = AT-PAC

08 = Month of Manufacture

11 = Year of Manufacture

XX = Order Number

TI = Reference Number

OVERVIEW

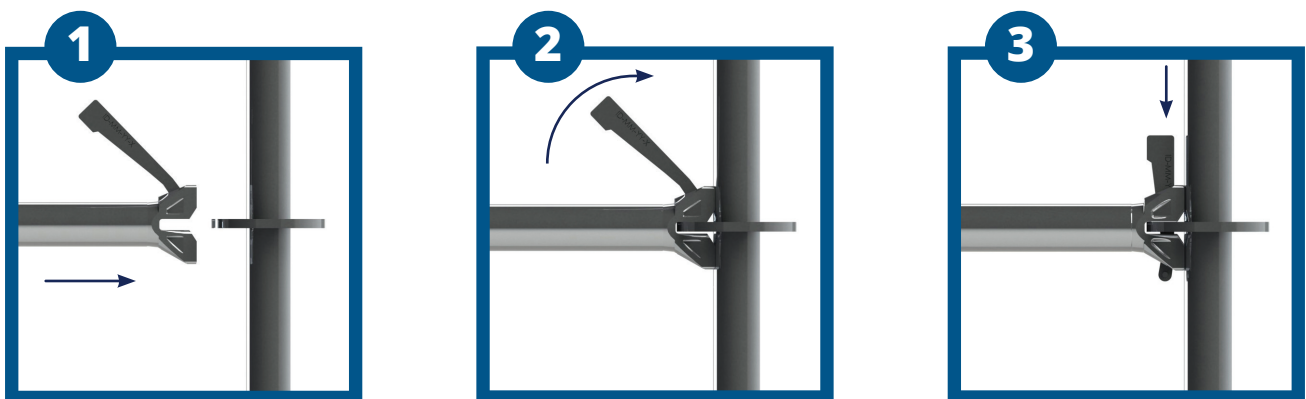
RINGLOCK NODE CONNECTION

Ringlock node connection consists of Standards with rosettes every 0.5m and horizontal members with a cast end captive wedge (Ledger and Transom). When connected together the Ledger ends and rosettes create a very strong connection. It is this connection that transmits forces throughout the scaffold structure.

The Ringlock rosette has a diameter of 123mm and has been manufactured to have 8 holes, 4 of which are small and 4 of which are large. The smaller holes represent the 90 degree angle at which Ledgers and Transoms are fitted. The larger holes accommodate the Diagonal Bay Braces.

The rosette also allows for the Ledgers to be connected into the larger holes. This gives up to 15 degrees of maneuverability in each direction. This provides the ability to move the Ledgers to clear obstacles.

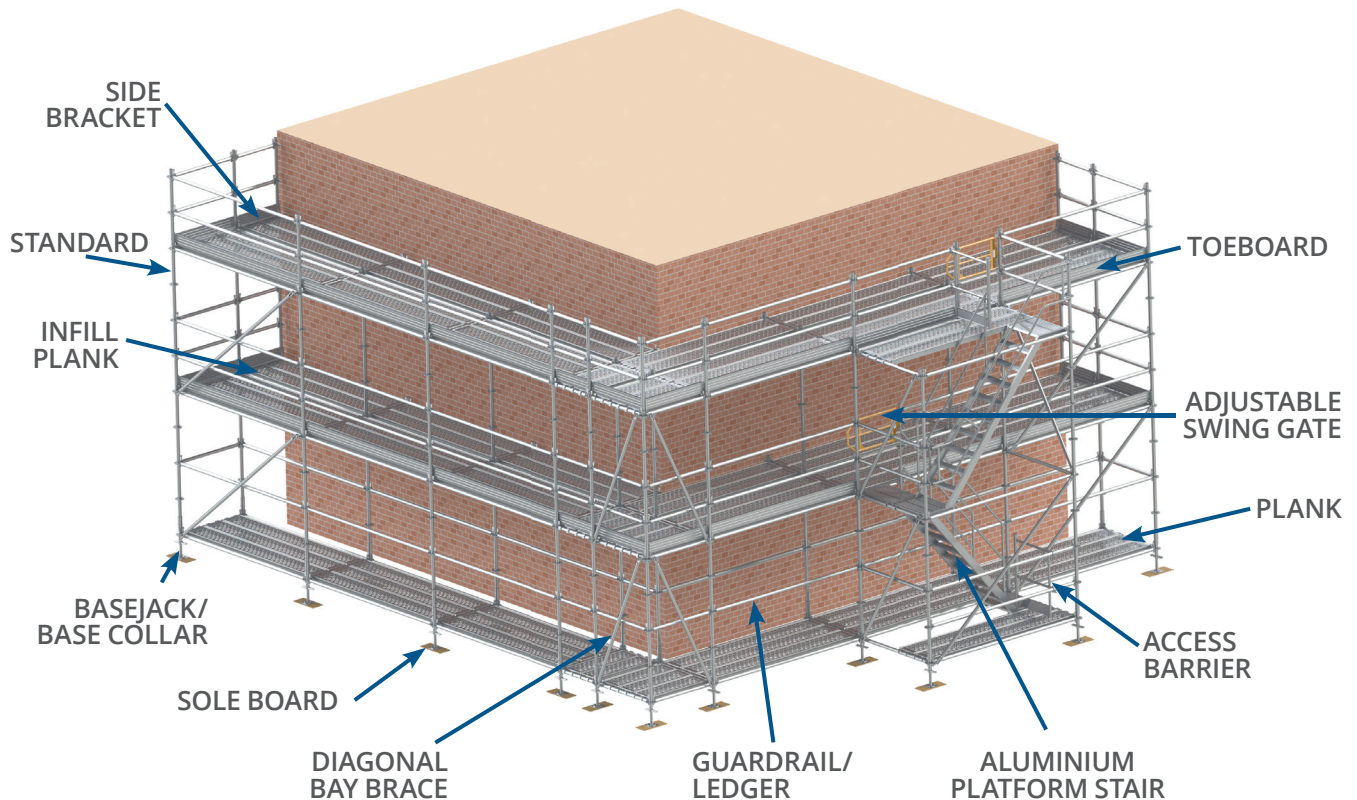
TO MAKE A CONNECTION



OVERVIEW

COMPONENT IDENTIFICATION

The following diagram represents the most common Ringlock components used. Most scaffold structures are made from these basic components yet the Ringlock system comes with a variety of accessories for all your scaffolding requirements.



The above layout provides a typical arrangement of the Ringlock system and we can provide you with a variety of means of access. These include:

- Ladder Access using Ledger to Plank and Plank to Plank Transoms
- Stair Treads and Stringers to form integral stairs or independent stair towers.
- Aluminium Platform Stairs in one bay.
- All Aluminium Decks with integral ladders.

OVERVIEW

COLOUR CODED COMPONENTS

A new feature offered by AT-PAC, are colour coded horizontal components manufactured with a coloured identification label. This process allows the scaffolder to easily match particular components for each size of bay to be erected. (For example: A Purple Ledger (1.09m) will work with a Purple Diagonal and a Purple Plank.)



RED- 0.39M COMPONENTS



MAGENTA- 1.40M COMPONENTS



WHITE- 0.45M COMPONENTS



ORANGE- 1.57M COMPONENTS



YELLOW- 0.73M COMPONENTS



CYAN- 2.07M COMPONENTS



BLACK- 1.036M COMPONENTS



GREEN- 2.57M COMPONENTS



PURPLE- 1.09M COMPONENTS



BROWN- 3.07M COMPONENTS



BLUE- ITEMS WITHOUT SPECIFIC SIZE

RINGLOCK

Base

SCREWJACK / BASE JACK

The Screwjack is used as a starting base for a scaffold. It is adjustable in height to allow for compensation on uneven surfaces so that a level scaffold is always attainable.

SCREWJACK / BASE JACK					
PRODUCT		HEIGHT	WEIGHT	PACKAGING	
CODE	DESCRIPTION	METRES	KG	QTY	TYPE
06.01.060.00	Screwjack / Base Jack	0.60	3.87	220	Rack



SWIVEL JACK

The Swivel Jack is used as a starting base for a scaffold. It is adjustable in height and angle to allow for compensation on uneven surfaces so that a level scaffold is always attainable.

Swivel Jack					
PRODUCT		HEIGHT	WEIGHT	PACKAGING	
CODE	DESCRIPTION	METRES	KG	QTY	TYPE
06.03.078.00	Swivel Jack	0.78	6.02	160	Rack



CASTOR 0.3m

The Castor 0.3m is designed to provide mobility to a medium to large size scaffold tower allowing the tower to roll across a flat surface.

CASTOR 0.3m					
PRODUCT		DIAMETER	WEIGHT	PACKAGING	
CODE	DESCRIPTION	METRES	KG	QTY	TYPE
07.02.030.00	Castor 0.3m	0.30	16.01	220	Rack



RINGLOCK

Base

STARTER/BASE COLLAR

The Base Collar is the beginning of the Ringlock Scaffolding system. It sits upon a fixed or Adjustable Base.

STARTER / BASE COLLAR					
PRODUCT		HEIGHT	WEIGHT	PACKAGING	
CODE	DESCRIPTION	METRES	KG	QTY	TYPE
01.27.000.00	Starter/Base Collar	0.301	2.43	385	Rack



ADAPTER FOR 0.3m CASTOR

The Adapter for 0.3m Castor is used as a base connection point to a 0.3m Castor and provides a base spigot to use with Standards or Base Collars to begin scaffold construction.

ADAPTER FOR 0.3m CASTOR					
PRODUCT		HEIGHT	WEIGHT	PACKAGING	
CODE	DESCRIPTION	METRES	KG	QTY	TYPE
01.33.030.00	Adapter for 12" Castor	0.249	4.24	144	Rack + Insert



RINGLOCK

Standards

STANDARD WITH CRIMPED SPIGOT

The Standard with Crimped Spigot is the vertical member of Ringlock scaffolding that utilises a crimped spigot. The Rosettes are located at fixed increments 0.5m for attaching horizontal Transom/Ledgers and Diagonal Braces.

STANDARD WITH CRIMPED SPIGOT					
PRODUCT		HEIGHT	WEIGHT	PACKAGING	
CODE	DESCRIPTION	METRES	KG	QTY	TYPE
01.01.050.00	Standard (1 Ring)	0.5	3.31	270	Rack
01.01.100.00	Standard (2 Ring)	1.0	5.62	180	Rack
01.01.150.00	Standard (3 Ring)	1.5	7.94	90	Rack
01.01.200.00	Standard (4 Ring)	2.0	10.32	90	Rack
01.01.250.00	Standard (5 Ring)	2.5	12.03	90	Rack
01.01.300.00	Standard (6 Ring)	3.0	14.99	90	Rack
01.01.400.00	Standard (8 Ring)	4.0	19.77	90	Rack



STANDARD WITH HANGING SPIGOT

The Standard with Hanging Spigot is a vertical member of Ringlock scaffolding. The Standard provides the vertical support for suspended scaffolding.

STANDARD WITH HANGING SPIGOT					
PRODUCT		HEIGHT	WEIGHT	PACKAGING	
CODE	DESCRIPTION	METRES	KG	QTY	TYPE
01.02.050.00	Standard (1 Ring)	0.5	2.24	270	Rack
01.02.100.00	Standard (2 Ring)	1.0	6.78	180	Rack
01.02.150.00	Standard (3 Ring)	1.5	8.76	90	Rack
01.02.200.00	Standard (4 Ring)	2.0	11.00	90	Rack
01.02.250.00	Standard (5 Ring)	2.5	13.90	90	Rack
01.02.300.00	Standard (6 Ring)	3.0	15.63	90	Rack
01.02.400.50	Standard (8 Ring)	4.0	19.96	90	Rack
35.01.000.00	Spigot for Hanging Scaffold	N/A	1.20	750	Rack + Insert



Note: Spigot supplied separately

RINGLOCK

Ledgers

LEDGER O-TYPE

The Ledger O-Type is the horizontal member of Ringlock scaffolding. They provide horizontal support for Ringlock planks. Ledgers can also be used as mid rail and top or hand Guardrail.

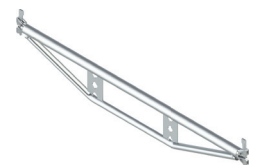
LEDGER O-TYPE					
PRODUCTS		LENGTH	WEIGHT	PACKAGING	
CODE	DESCRIPTION	METRES	KG	QTY	TYPE
01.03.015.00	Ledger O-Type	0.15	1.17	300	Rack
01.03.039.50	Ledger O-Type	0.39	2.14	300	Rack
01.03.073.50	Ledger O-Type	0.73	3.39	300	Rack
01.03.104.50	Ledger O-Type	1.04	4.31	200	Rack
01.03.109.00	Ledger O-Type	1.09	4.70	200	Rack
01.03.140.50	Ledger O-Type	1.40	5.54	200	Rack
01.03.157.00	Ledger O-Type	1.57	6.45	200	Rack
01.03.207.50	Ledger O-Type	2.07	8.19	150	Rack
01.03.257.50	Ledger O-Type	2.57	9.91	150	Rack
01.03.307.50	Ledger O-Type	3.07	11.67	150	Rack



TRUSS LEDGER O-TYPE

Truss Ledgers O-Type have been value engineered to enable higher service loads to the scaffold than could be applied using traditional Ledgers. The reinforcing tube and stiffener plates support the top tube and provide strength while maintaining lightness.

TRUSS LEDGER O-TYPE					
PRODUCT		LENGTH	WEIGHT	PACKAGING	
CODE	DESCRIPTION	METRES	KG	QTY	TYPE
01.18.140.00	Truss Ledger O-Type	1.40	9.38	63	Rack
01.18.157.00	Truss Ledger O-Type	1.57	10.10	63	Rack
01.18.207.50	Truss Ledger O-Type	2.07	13.91	63	Rack
01.18.257.50	Truss Ledger O-Type	2.57	16.68	63	Rack
01.18.307.50	Truss Ledger O-Type	3.07	21.26	63	Rack



RINGLOCK

Ledgers/Transoms U-Type

LEDGER U-TYPE

The Ledger U-Type is the horizontal member of Ringlock scaffolding. They provide horizontal support for Ringlock Planks.

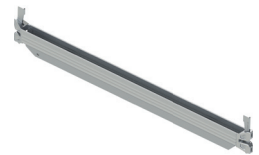
U LEDGER/TRANSOM					
PRODUCT		LENGTH	WEIGHT	PACKAGING	
CODE	DESCRIPTION	METRES	KG	QTY	TYPE
01.04.039.50	Ledger U-Type	0.39	1.99	300	Rack
01.04.073.50	Ledger U-Type	0.73	3.18	300	Rack



REINFORCED LEDGER/TRANSOM U-TYPE

The Reinforced Ledger is a reinforced horizontal member of the Ringlock Scaffolding. They provide support for Ringlock Planks at longer spans between verticals.

U REINFORCED LEDGER/TRANSOM					
PRODUCT		LENGTH	WEIGHT	PACKAGING	
CODE	DESCRIPTION	METRES	KG	QTY	TYPE
01.05.109.50	Ledger U-Type—Reinforced	1.09	6.48	110	Rack
01.05.140.50	Ledger U-Type—Reinforced	1.40	8.21	110	Rack
01.05.157.50	Ledger U-Type—Reinforced	1.57	9.30	110	Rack



TRUSS LEDGER/TRANSOM U-TYPE

Truss Ledgers U-Type have been value engineered to enable higher service loads to the scaffold than could be applied using traditional Ledgers.

U TRUSS LEDGER/TRANSOM					
PRODUCT		LENGTH	WEIGHT	PACKAGING	
CODE	DESCRIPTION	METRES	KG	QTY	TYPE
01.19.140.50	Truss Ledger U-Type	1.40	9.09	70	Rack
01.19.157.50	Truss Ledger U-Type	1.57	10.84	70	Rack
01.19.207.50	Truss Ledger U-Type	2.07	14.40	70	Rack
01.19.257.50	Truss Ledger U-Type	2.57	17.74	70	Rack
01.19.307.50	Truss Ledger U-Type	3.07	21.49	70	Rack



LEDGER TO PLANK TRANSOM O-TYPE

The Ledger to Plank Transom O-Type is used where a ladder access opening is required on one side of the access platform.

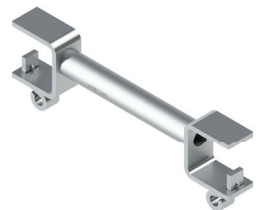
LEDGER TO PLANK TRANSOM					
PRODUCT		LENGTH	WEIGHT	PACKAGING	
CODE	DESCRIPTION	METRES	KG	QTY	TYPE
01.23.320.50	Ledger to Plank—1 Plank	0.32	3.46	200	Rack + Insert
01.23.640.50	Ledger to Plank—2 Plank	0.64	4.31	200	Rack
01.23.960.50	Ledger to Plank—3 Plank	0.96	5.62	200	Rack



PLANK TO PLANK TRANSOM O-TYPE

Plank to Plank Transoms O-Type are used when an opening is required in the middle of a platform, for example a column or pipework that may pass through the working platform.

PLANK TO PLANK TRANSOM					
PRODUCT		LENGTH	WEIGHT	PACKAGING	
CODE	DESCRIPTION	METRES	KG	QTY	TYPE
01.24.320.50	Plank to Plank—1 Plank	0.32	3.69	170	Rack + Insert
01.24.640.50	Plank to Plank—2 Plank	0.64	4.69	200	Rack
01.24.960.50	Plank to Plank—3 Plank	0.96	5.59	200	Rack



MID TRANSOM O-TYPE

The Mid Transom is designed to create a Transom at the plank level anywhere inside of a bay by straddling the outer Ledgers/ Transoms of a bay.

MID TRANSOM O-TYPE					
PRODUCT		LENGTH	WEIGHT	PACKAGING	
CODE	DESCRIPTION	METRES	KG	QTY	TYPE
01.20.039.50	Mid Transom	0.39	2.73	160	Rack
01.20.073.50	Mid Transom	0.73	3.91	160	Rack
01.20.104.50	Mid Transom	1.04	4.96	160	Rack
01.20.109.00	Mid Transom	1.09	5.14	160	Rack
01.20.140.50	Mid Transom	1.40	6.28	160	Rack
01.20.157.00	Mid Transom	1.57	6.82	160	Rack
01.20.207.50	Mid Transom	2.07	8.49	160	Rack
01.20.257.50	Mid Transom	2.57	10.15	160	Rack
01.20.307.50	Mid Transom	3.07	12.12	160	Rack



RINGLOCK

U Intermediate Transoms

LEDGER TO PLANK TRANSOM U-TYPE

The Ledger to Plank Transom U-Type is used where a ladder access opening is required on one side of the access platform.

U LEDGER TO PLANK TRANSOM

PRODUCT		LENGTH	WEIGHT	PACKAGING	
CODE	DESCRIPTION	METRES	KG	QTY	TYPE
01.25.320.50	U-Type (Ledger to Plank) —1 Plank	0.32	3.71	170	Cage
01.25.640.50	U-Type (Ledger to Plank) —2 Plank	0.64	4.71	200	Rack
01.25.960.50	U-Type (Ledger to Plank) —3 Plank	0.96	5.77	200	Rack



PLANK TO PLANK TRANSOM U-TYPE

Plank to Plank Transoms U-Type are used when an opening is required in the middle of a platform, for example a column or pipework that may pass through the working platform.

U PLANK TO PLANK TRANSOM

PRODUCT		LENGTH	WEIGHT	PACKAGING	
CODE	DESCRIPTION	METRES	KG	QTY	TYPE
01.26.320.50	U-Type (Plank to Plank) —1 Plank	0.32	3.96	170	Cage
01.26.640.50	U-Type (Plank to Plank) —2 Plank	0.64	5.13	200	Cage
01.26.960.50	U-Type (Plank to Plank) —3 Plank	0.96	6.37	200	Cage



RINGLOCK

Brackets

SIDE/HOP-UP BRACKET O-TYPE

Side/Hop-Up Brackets are used to extend the working platform closer to the building structure in cases where the main scaffold cannot be erected directly next to the working face.

SIDE BRACKET O-TYPE					
PRODUCT		WIDTH	WEIGHT	PACKAGING	
CODE	DESCRIPTION	METRES	KG	QTY	TYPE
01.11.039.50	Side Bracket O-Type	0.39	4.94	110	Rack + Insert
01.11.073.50	Side Bracket O-Type	0.73	7.46	50	Rack



SIDE/CONSOLE BRACKET O-TYPE

Side/Console Brackets are used at the edge of a scaffolding to extend the or widen the working platform.

SIDE/CONSOLE BRACKET O-TYPE					
PRODUCT		WIDTH	WEIGHT	PACKAGING	
CODE	DESCRIPTION	METRES	KG	QTY	TYPE
01.12.109.00	Side/Console Bracket O-Type	1.09	12.74	24	Rack



SIDE/HOP UP BRACKET U-TYPE

SIDE BRACKET U-TYPE					
PRODUCT		WIDTH	WEIGHT	PACKAGING	
CODE	DESCRIPTION	METRES	KG	QTY	TYPE
01.13.039.50	Side Bracket U-Type	0.39	4.83	100	Rack + Insert
01.13.073.50	Side Bracket U-Type	0.73	7.47	50	Rack



SIDE/CONSOLE BRACKET U-TYPE

SIDE/CONSOLE BRACKET U-TYPE					
PRODUCT		WIDTH	WEIGHT	PACKAGING	
CODE	DESCRIPTION	METRES	KG	QTY	TYPE
01.14.109.50	Side/Console Bracket U-Type	1.09	12.39	26	Rack



RINGLOCK

Bay Braces

BAY BRACES

Bay Braces are used for the lateral bracing of Ringlock scaffolds. They can also be used as compression and tension members for cantilevers/spurs, transmitting loads back into the main scaffold structure.

DIAGONAL BAY BRACE (FACADE BRACE FOR 2.0m LIFT HEIGHT)

PRODUCT		BAY LENGTH	WEIGHT	PACKAGING	
CODE	DESCRIPTION	METRES	KG	QTY	TYPE
01.06.073.50	Bay Brace 2.0m Lift	0.73	7.55	150	Rack
01.06.104.50	Bay Brace 2.0m Lift	1.04	7.83	150	Rack
01.06.109.00	Bay Brace 2.0m Lift	1.09	7.86	150	Rack
01.06.140.50	Bay Brace 2.0m Lift	1.40	8.31	150	Rack
01.06.157.00	Bay Brace 2.0m Lift	1.57	8.54	150	Rack
01.06.207.50	Bay Brace 2.0m Lift	2.07	9.45	150	Rack
01.06.257.50	Bay Brace 2.0m Lift	2.57	10.46	150	Rack
01.06.307.50	Bay Brace 2.0m Lift	3.07	11.57	150	Rack



DIAGONAL BAY BRACE (FACADE BRACE FOR 1.5m LIFT HEIGHT)

PRODUCT		BAY LENGTH	WEIGHT	PACKAGING	
CODE	DESCRIPTION	METRES	KG	QTY	TYPE
01.07.073.50	Bay Brace 1.5m Lift	0.73	5.90	150	Rack
01.07.104.50	Bay Brace 1.5m Lift	1.04	6.20	150	Rack
01.07.109.00	Bay Brace 1.5m Lift	1.09	6.85	150	Rack
01.07.140.50	Bay Brace 1.5m Lift	1.40	6.70	150	Rack
01.07.157.00	Bay Brace 1.5m Lift	1.57	7.68	150	Rack
01.07.207.50	Bay Brace 1.5m Lift	2.07	8.10	150	Rack
01.07.257.50	Bay Brace 1.5m Lift	2.57	9.20	150	Rack
01.07.307.50	Bay Brace 1.5m Lift	3.07	10.30	150	Rack



DIAGONAL BAY BRACE (FACADE BRACE FOR 1.0m LIFT HEIGHT)

PRODUCT		BAY LENGTH	WEIGHT	PACKAGING	
CODE	DESCRIPTION	METRES	KG	QTY	TYPE
01.08.073.50	Bay Brace 1.0m Lift	0.73	4.74	150	Rack
01.08.104.50	Bay Brace 1.0m Lift	1.04	5.21	150	Rack
01.08.109.00	Bay Brace 1.0m Lift	1.09	5.29	150	Rack
01.08.140.50	Bay Brace 1.0m Lift	1.40	5.21	150	Rack
01.08.157.00	Bay Brace 1.0m Lift	1.57	6.24	150	Rack
01.08.207.50	Bay Brace 1.0m Lift	2.07	7.39	150	Rack
01.08.257.50	Bay Brace 1.0m Lift	2.57	8.59	150	Rack
01.08.307.50	Bay Brace 1.0m Lift	3.07	9.82	150	Rack



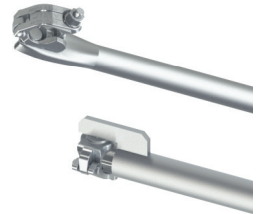
RINGLOCK

Telescopic Braces

TELESCOPIC BRACES

Telescopic Braces are used for the lateral bracing of Ringlock scaffolds. They can also be used as compression and tension members for cantilevers/spurs. Telescopic Braces are comprised of an inner and outer tube connected together using a drop-forged half coupler. Telescopic Braces connect to Ringlock Standards using Swivel Half Couplers.

TELESCOPIC BRACES						
PRODUCT		RANGE	WEIGHT	PACKAGING		
CODE	DESCRIPTION	METRES	KG	QTY	TYPE	
01.36.001.50	Telescopic Brace—Long	2.6-4.3	26.45	150	Rack	
01.36.002.50	Telescopic Brace—Medium	1.56-2.38	11.28	150	Rack	
01.36.003.50	Telescopic Brace—Short	0.94-1.27	7.20	150	Rack	



RINGLOCK

Girders/Spigot Adapters

LATTICE GIRDER, NO SPIGOT 0.5m

Lattice Girders are a horizontal member of Ringlock scaffolding that allow for bridging over large spans of 5.14m to 7.71m.

LATTICE GIRDER, NO SPIGOT 0.5m					
PRODUCT		LENGTH	WEIGHT	PACKAGING	
CODE	DESCRIPTION	METRES	KG	QTY	TYPE
01.16.257.50	Lattice Girder, No Spigot 0.5m	2.57	28.00	20	Bundle
01.16.307.50	Lattice Girder, No Spigot 0.5m	3.07	32.00	20	Bundle
01.16.514.50	Lattice Girder, No Spigot 0.5m	5.14	52.00	20	Bundle
01.16.614.50	Lattice Girder, No Spigot 0.5m	6.14	64.00	20	Bundle
01.16.771.50	Lattice Girder, No Spigot 0.5m	7.71	82.00	20	Bundle



SPIGOT ADAPTER CLAMP FOR GIRDERS

Spigot Adapter Clamps allow the connection of Ringlock Standards at intermediate locations along the length of O-Type Ledgers, Truss Ledgers and Girders.

LATTICE GIRDER SPIGOT ADAPTER CLAMP				
PRODUCT		WEIGHT	PACKAGING	
CODE	DESCRIPTION	KG	QTY	TYPE
05.08.200.50	Spigot Adaptor. Clamp for Girders	1.80	500	Rack + Insert

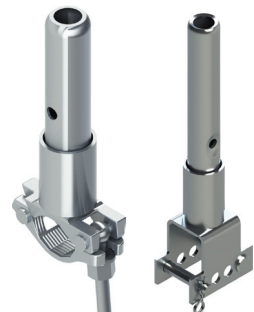
***Product Available in a Nut Size of 21mm (UK), 22mm (7/8" N. America) and 23mm (AUS)*



SPIGOT ADAPTER CLAMP

SPIGOT ADAPTER CLAMP				
PRODUCT		WEIGHT	PACKAGING	
CODE	DESCRIPTION	KG	QTY	TYPE
05.03.200.50	Spigot Adapter Clamp	1.86	650	Rack + Insert
05.09.200.50	U Spigot Adapter Clamp	1.80	500	Rack + Insert

***Product Available in a Nut Size of 21mm (UK), 22mm (7/8" N. America) and 23mm (AUS)*



WORK PLATFORMS

Introduction



WORK PLATFORMS

AT-PAC provides a range of work platform products for its Ringlock Scaffold. These include Modular Steel Planks 320mm and 190mm wide, Infill Planks 190mm wide, Gap Filler Planks 320mm wide and Gap Filler Plates 320mm wide. All work platform products are available in the typical Ringlock Ledger Lengths.

Customers and users can rest assured that, no matter which product they choose, all AT-PAC work platform products are manufactured to stringent quality specifications and go through rigorous testing and checking before being shipped.

AT-PAC work platforms provide a strong, safe working surface no matter what the application.

AT-PAC backs its products with its proprietary Quality Assurance System. This program is designed to ensure that each and every AT-PAC work platform product has been manufactured correctly and functions and performs as it should. This involves continual factory auditing, monitoring, testing, in-process inspections and pre-shipment inspections.

WORK PLATFORMS

Planks

STEEL PLANK O-TYPE 320mm

Steel Planks are used to form the working platform. The number of Steel Planks used determines the width of the platform. They span the length of the bay and hook onto the supporting Ledger/Transom. There is an anti-lift system to prevent uplift in adverse weather conditions.

STEEL PLANK O-TYPE 320mm						
PRODUCT		LENGTH	WEIGHT	PACKAGING		
CODE	DESCRIPTION	METRES	KG	QTY	TYPE	
08.03.073.50	Steel Plank 320mm	0.73	7.20	75	Rack	
08.03.109.50	Steel Plank 320mm	1.09	9.63	75	Rack	
08.03.140.50	Steel Plank 320mm	1.40	11.75	75	Rack	
08.03.157.50	Steel Plank 320mm	1.57	12.94	75	Rack	
08.03.207.50	Steel Plank 320mm	2.07	16.30	75	Rack	
08.03.257.50	Steel Plank 320mm	2.57	19.88	75	Rack	
08.03.307.50	Steel Plank 320mm	3.07	23.25	75	Rack	



STEEL PLANK O-TYPE 190mm

Steel Planks are used to form the working platform. The number of Steel Planks used determines the width of the platform. They span the length of the bay and hook onto the supporting Ledger/Transom. There is an anti-lift system to prevent uplift in adverse weather conditions.

STEEL PLANK O-TYPE 190mm						
PRODUCT		LENGTH	WEIGHT	PACKAGING		
CODE	DESCRIPTION	METRES	KG	QTY	TYPE	
08.01.073.50	Steel Plank 190mm	0.73	5.22	50	Rack	
08.01.109.50	Steel Plank 190mm	1.09	7.09	50	Rack	
08.01.140.50	Steel Plank 190mm	1.40	8.87	50	Rack	
08.01.157.50	Steel Plank 190mm	1.57	9.59	50	Rack	
08.01.207.50	Steel Plank 190mm	2.07	12.12	50	Rack	
08.01.257.50	Steel Plank 190mm	2.57	14.63	50	Rack	
08.01.307.50	Steel Plank 190mm	3.07	17.37	50	Rack	



WORK PLATFORMS

Planks

STEEL PLANK U-TYPE

U-Type Steel Plank connect to U-Ledgers/ Transoms instead of the O-Type.

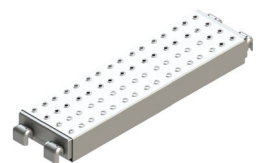
STEEL PLANK U-TYPE 320mm

PRODUCT		LENGTH	WEIGHT	PACKAGING	
CODE	DESCRIPTION	METRES	KG	QTY	TYPE
08.05.073.50	Steel Plank 320mm	0.73	6.78	75	Rack
08.05.109.50	Steel Plank 320mm	1.09	8.74	75	Rack
08.05.140.50	Steel Plank 320mm	1.40	10.86	75	Rack
08.05.157.50	Steel Plank 320mm	1.57	12.07	75	Rack
08.05.207.50	Steel Plank 320mm	2.07	15.25	75	Rack
08.05.257.50	Steel Plank 320mm	2.57	19.40	75	Rack
08.05.307.50	Steel Plank 320mm	3.07	22.17	75	Rack



STEEL PLANK U-TYPE 190mm

PRODUCT		LENGTH	WEIGHT	PACKAGING	
CODE	DESCRIPTION	METRES	KG	QTY	TYPE
08.04.073.50	Steel Plank 190mm	0.73	5.16	125	Rack
08.04.109.50	Steel Plank 190mm	1.09	6.88	125	Rack
08.04.140.50	Steel Plank 190mm	1.40	8.57	125	Rack
08.04.157.50	Steel Plank 190mm	1.57	9.88	125	Rack
08.04.207.50	Steel Plank 190mm	2.07	12.52	125	Rack
08.04.257.50	Steel Plank 190mm	2.57	15.58	125	Rack
08.04.307.50	Steel Plank 190mm	3.07	18.45	125	Rack



DECK LOCK

The Deck Locks are designed to prevent the U-Type Planks from uplift and connect into slots on the underside of the U Ledger/Transom.

DECK LOCK

PRODUCT		LENGTH	WEIGHT	PACKAGING	
CODE	DESCRIPTION	METRES	KG	QTY	TYPE
08.11.073.50	Deck Lock	0.73	1.32	250	Rack
08.11.109.50	Deck Lock	1.09	1.83	250	Rack
08.11.140.50	Deck Lock	1.40	2.69	250	Rack
08.11.157.50	Deck Lock	1.57	2.65	250	Rack
08.11.207.50	Deck Lock	2.07	3.48	250	Rack
08.11.257.50	Deck Lock	2.57	4.16	250	Rack
08.11.307.50	Deck Lock	3.07	5.20	250	Rack



WORK PLATFORMS

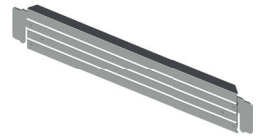
Toeboards/Infill

INTERLOCKING TOEBOARD 24mm

Interlocking Toeboards are designed to enclose the bay at the Plank level, preventing small tools, debris and other items from falling off the platform.

INTERLOCKING TOEBOARD 24mm

PRODUCT		LENGTH	WEIGHT	PACKAGING	
CODE	DESCRIPTION	METRES	KG	QTY	TYPE
08.09.073.50	Interlocking Toeboard	0.73	2.34	460	Rack
08.09.104.50	Interlocking Toeboard	1.04	3.08	230	Rack
08.09.109.50	Interlocking Toeboard	1.09	3.28	230	Rack
08.09.140.50	Interlocking Toeboard	1.40	3.97	230	Rack
08.09.157.50	Interlocking Toeboard	1.57	4.38	230	Rack
08.09.207.50	Interlocking Toeboard	2.07	5.54	230	Rack
08.09.257.50	Interlocking Toeboard	2.57	6.92	230	Rack
08.09.307.50	Interlocking Toeboard	3.07	8.22	230	Rack



TOE BOARD RETAINING CLAMP

The Toe Board Retaining Clamps are used to secure the toeboard from uplift in adverse weather conditions.

TOE BOARD RETAINING CLAMP

PRODUCTS		LENGTH	WEIGHT	PACKAGING	
CODE	DESCRIPTION	METRES	KG	QTY	TYPE
04.16.000.00	Toe Board Retaining Clamp	0.08	0.83	350	Rack+Insert

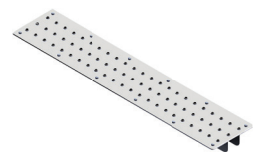


INFILL PLANK 190mm

Infill Planks are designed to fill any unwanted gaps between Planks or bays providing a continuous working platform.

INFILL PLANK 190mm

PRODUCTS		LENGTH	WEIGHT	PACKAGING	
CODE	DESCRIPTION	METRES	KG	QTY	TYPE
08.07.073.50	Infill Plank	0.73	3.37	270	Rack
08.07.109.00	Infill Plank	1.09	5.04	135	Rack
08.07.140.50	Infill Plank	1.40	6.47	135	Rack
08.07.157.00	Infill Plank	1.57	6.58	135	Rack
08.07.207.50	Infill Plank	2.07	9.13	135	Rack
08.07.257.50	Infill Plank	2.57	11.35	135	Rack
08.07.307.50	Infill Plank	3.07	13.60	135	Rack



WORK PLATFORMS

Infill

GAP FILLER PLANK

The Gap Filler Plank is designed to span small openings in the Ringlock platform or between bays.

GAP FILLER PLANK					
PRODUCT		LENGTH	WEIGHT	PACKAGING	
CODE	DESCRIPTION	METRES	KG	QTY	TYPE
08.13.075.50	320mm Gap Filler Plank	0.75	4.52	144	Rack
08.13.100.50	320mm Gap Filler Plank	1.00	5.50	72	Rack
08.13.125.50	320mm Gap Filler Plank	1.25	6.67	72	Rack
08.13.150.50	320mm Gap Filler Plank	1.50	7.74	72	Rack
08.13.175.50	320mm Gap Filler Plank	1.75	5.50	72	Rack
08.13.200.50	320mm Gap Filler Plank	2.00	10.52	72	Rack
08.14.075.50	190mm Gap Filler Plank	0.75	2.80	240	Rack
08.14.100.50	190mm Gap Filler Plank	1.00	3.50	120	Rack
08.14.125.50	190mm Gap Filler Plank	1.25	4.18	120	Rack
08.14.150.50	190mm Gap Filler Plank	1.50	4.87	120	Rack
08.14.175.50	190mm Gap Filler Plank	1.75	5.57	120	Rack
08.14.200.50	190mm Gap Filler Plank	2.00	6.27	120	Rack
35.05.000.00	Rubber Plug	N/A	0.02	N/A	

Supplied with Rubber Plug to secure platform.



GAP FILLER PLATE

The Gap Filler Plates are designed to fill any unwanted gaps between planks or bays creating continuous working platforms.

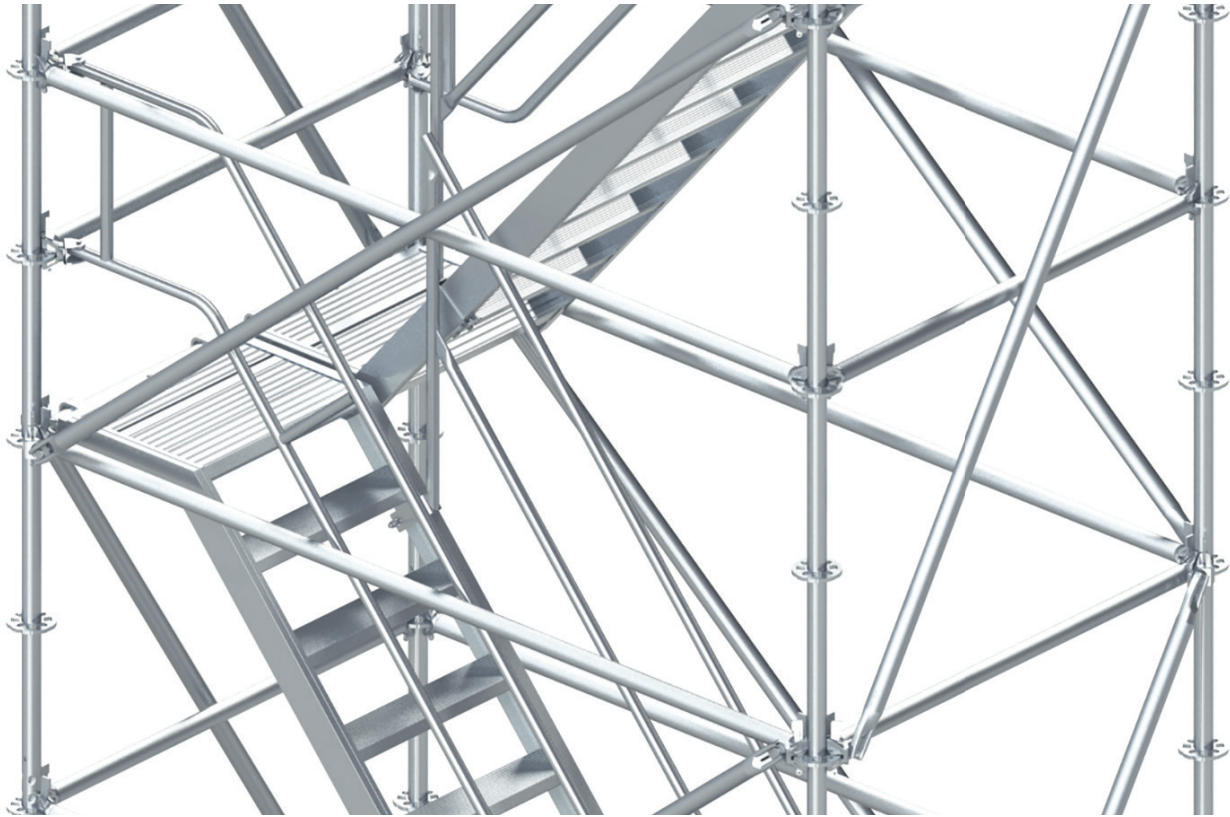
GAP FILLER PLATE					
PRODUCTS		LENGTH	WEIGHT	PACKAGING	
CODE	DESCRIPTION	METRES	KG	QTY	TYPE
08.15.073.50	Gap Filler Plate	0.73	2.20	320	Rack
08.15.104.50	Gap Filler Plate	1.04	3.28	160	Rack
08.15.109.50	Gap Filler Plate	1.09	3.47	160	Rack
08.15.140.50	Gap Filler Plate	1.40	4.58	160	Rack
08.15.157.50	Gap Filler Plate	1.57	5.19	160	Rack
08.15.207.50	Gap Filler Plate	2.07	6.97	400	TUBE Rack
08.15.257.50	Gap Filler Plate	2.57	8.44	400	TUBE Rack
08.15.307.50	Gap Filler Plate	3.07	10.55	400	TUBE Rack
35.05.000.00	Rubber Plug	N/A	0.02	N/A	

Supplied with Rubber Plug to secure platform.



ACCESS & EGRESS

Introduction



ACCESS & EGRESS

AT-PAC has developed a full complement of Access & Egress products for AT-PAC Ringlock and other applications. These products are designed and manufactured in accordance with all applicable standards and provide a level of safety that is unparalleled in the industry. This range of components include Self-closing Safety Gates, Aluminium Platforms Stair units, Ringlock Steel Stairs and Access Barriers all built to exacting quality standards and individually checked for compliance and function.

The 10 Leg Steel Stairs are made from separate Steel Stringers and Treads so the system can be installed where access is tight, such as complex refinery installations where pipes and other obstructions prevent large pieces of scaffolding to be used. The landings are constructed from AT-PAC Steel Planks which provide a convenient and anti-slip platform. AT-PAC Ringlock Bay Braces are used as handrails for the stairs.

AT-PAC also offers its clients their newly designed Aluminium Platform Stair units. These are complete stair units with built-in landings. The use of lightweight structural Aluminium for the stair stringers, treads and landings make these units highly manageable and easy to install. They also allow the stair towers to have only 4 legs on plan, making the system very fast and easy to erect.

ACCESS & EGRESS

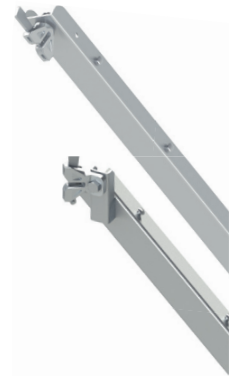
Steel Stair/Aluminium Ladder Deck

STEEL STAIR STRINGER

The Stair Stringer is the diagonal member of the 10 Leg Stair System. The Stringer must be used in pairs in order to support the Stair Treads. The Stringer is used for a typical 2.0m lift height.

STAIR STRINGER						
PRODUCT		BAY LENGTH	WEIGHT	PACKAGING		
CODE	DESCRIPTION	METRES	KG	QTY	TYPE	
15.01.207.00	Stair Stringer—U Type	2.07	14.90	108	Rack	
15.08.207.50	Stair Stringer Right —O Type	2.07	15.50	108	Rack	
15.07.207.50	Stair Stringer Left —O Type	2.07	15.50	108	Rack	

Note: The O-Type Stair Stringers are handed. (**Blue** = Powder coated ledger head left hand, **Yellow** = Powder coated ledger head right hand)



STEEL STAIR TREAD

The Stair Tread is designed as the horizontal member connecting to the Stair Stringers, providing the steps of the stair system. This fits into a 1.036m (1.04m) Bay width.

STAIR TREAD						
PRODUCT		WIDTH	WEIGHT	PACKAGING		
CODE	DESCRIPTION	METRES	KG	QTY	TYPE	
15.02.089.00	Stair Tread	0.89	9.19	20	Cage	



ALUMINIUM LADDER HATCH DECK

The aluminium frame with Ladder Hatch Deck acts as a lightweight, extra wide Scaffold Plank which incorporates a Ladder.

LADDER HATCH DECK						
PRODUCT		LENGTH	WEIGHT	PACKAGING		
CODE	DESCRIPTION	METRES	KG	QTY	TYPE	
19.02.257.50	All Aluminium Ladder Hatch Deck 2.57m x 0.64m	2.57	33.40	25	Rack	



ACCESS & EGRESS

Aluminium Platform Stair

ALUMINIUM PLATFORM STAIR O-TYPE

Aluminium Stairs are complete stair units with built in landings.

Aluminium PLATFORM STAIR W/LANDING O-TYPE					
PRODUCTS		LENGTH	WEIGHT	PACKAGING	
CODE	DESCRIPTION	METRES	KG	QTY	TYPE
16.01.257.50	Alum. Stair Platform O-Type	2.0 x 2.57	29.50	12	PALLET
16.01.307.50	Alum. Stair Platform O-Type	2.0 x 3.07	42.00	12	PALLET



ALUMINIUM PLATFORM STAIR GUARDRAILS

The Aluminium Stair Guardrail is used to provide a handrail on the inner side and outer side of the Aluminium Stair Platform.

ALUMINIUM STAIR INNER GUARDRAIL					
PRODUCT		LENGTH	WEIGHT	PACKAGING	
CODE	DESCRIPTION	METRES	KG	QTY	TYPE
16.08.000.50	Alum Stair Inner Guardrail UK	2.0 x 2.57	12.19	20	Rack

ALUMINIUM STAIR INNER EXTENDED GUARDRAIL					
PRODUCT		LENGTH	WEIGHT	PACKAGING	
CODE	DESCRIPTION	METRES	KG	QTY	TYPE
16.05.257.50	Alum Stair Inner Extended Guardrail 2m x 2.57m	2.57	13.00	20	Rack
16.05.307.50	Alum Stair Inner Extended Guardrail 2m x 3.07m	3.07	14.50	20	Rack

ALUMINIUM STAIR OUTER GUARDRAIL					
PRODUCT		LENGTH	WEIGHT	PACKAGING	
CODE	DESCRIPTION	METRES	KG	QTY	TYPE
16.06.257.50	Alum Stair Outer Guardrail 2m x 2.57m	2.57	18.50	20	Rack
16.06.307.50	Alum Stair Outer Guardrail 2m x 3.07m	3.07	18.00	20	Rack



ACCESS & EGRESS

Guardrail/Edge Protection

GUARDRAIL STANDARD

The Guardrail Standards are used to create openings for access & egress and the ability to attach a Safety Gate.

GUARDRAIL STANDARD					
PRODUCT		HEIGHT	WEIGHT	PACKAGING	
CODE	DESCRIPTION	METRES	KG	QTY	TYPE
01.31.163.00	Guardrail Standard	1.5	8.32	70	Rack

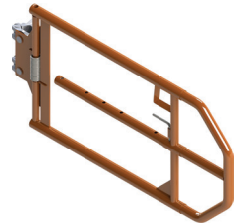


ADJUSTABLE SAFETY GATE

Adjustable Safety Gates are designed to secure an opening used for access & egress.

ADJUSTABLE SAFETY GATE					
PRODUCT		WIDTH	WEIGHT	PACKAGING	
CODE	DESCRIPTION	METRES	KG	QTY	TYPE
10.01.200.50	Adjustable Swing Gate 21mm Nut	1.0	8.20	34	Rack

***Product Available in a Nut Size of 21mm (UK), 22mm (N. America) and 23mm (AUS)*



ACCESS BARRIER

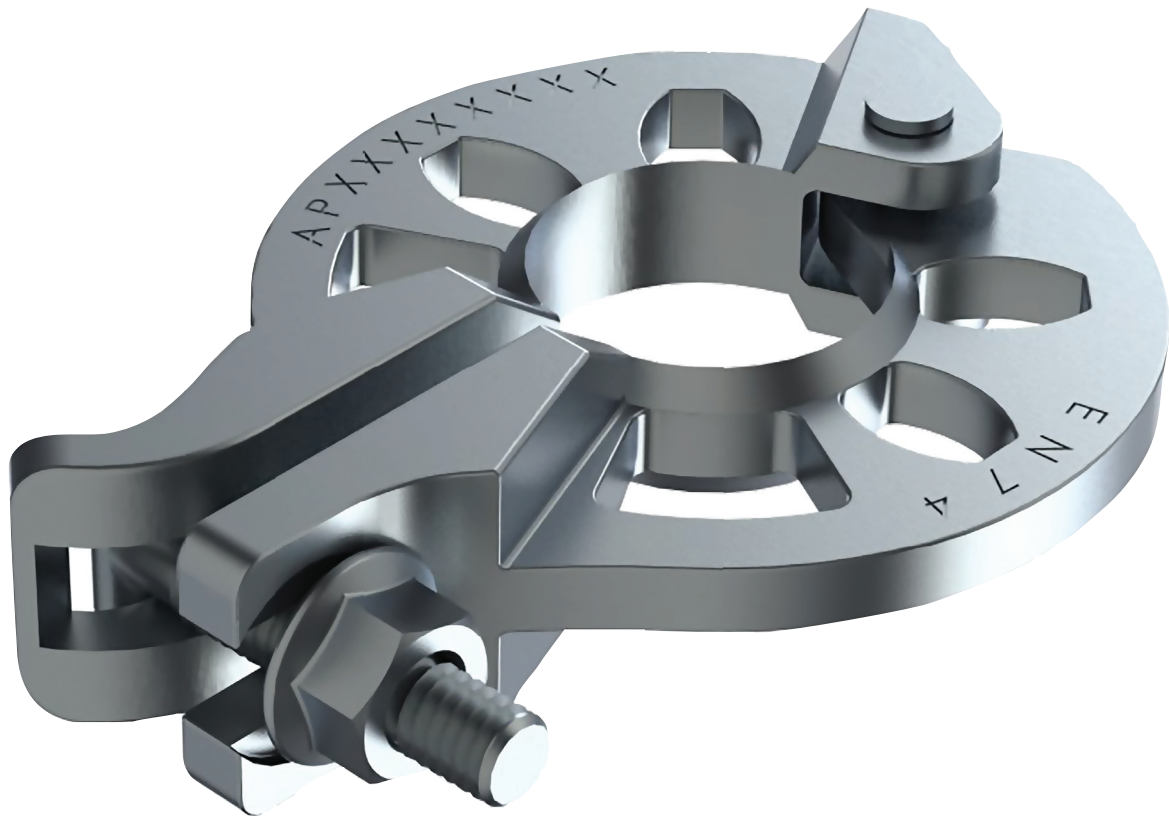
The Access Barriers are designed to be used as a guardrail at the top and bottom of the Aluminum 4 leg Platform Stairs and can also be used to provide barriers around gaps in platforms for ladder access.

ACCESS BARRIER					
PRODUCT		WIDTH	WEIGHT	PACKAGING	
CODE	DESCRIPTION	METRES	KG	QTY	TYPE
10.06.700.50	Access Barrier	0.7	11	26	Rack



ACCESSORIES

Introduction



INTRODUCTION

AT-PAC has a continually growing list of accessories for Ringlock System Scaffold. These accessories enhance Ringlock capabilities for simple or complicated scaffold structures. AT-PAC's Engineering department has a wealth of experience when it comes to designing and manufacturing components. On request from customers AT-PAC can also design, manufacture and supply special components.

These special components are taken from concept to completion in a timely manner to ensure customers are able to maintain productivity at all times. All components are analysed by Professional Engineers and tested via recognised test laboratories, globally.

The accessory range of products include Rosette Coupler, Adapter Clamps, Leg Locks and Loading Bays to name a few.

AT-PAC's Engineering department adopts the latest 3d design software and 3d printing capabilities in order to develop new products/ accessories. This strong emphasis on design, analysis and testing brings AT-PAC to the forefront of design development within the scaffolding industry.

ACCESSORIES

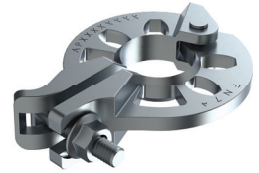
Clamps/Leg Lock

ROSETTE CLAMP

The Rosette Clamp is used to add a rosette at any point on a vertical Standard or tube.

ROSETTE CLAMP					
PRODUCT		WEIGHT	PACKAGING		
CODE	DESCRIPTION	KG	QTY	TYPE	
01.30.000.50	Rosette Clamp (T-Bolt)	1.19	750	Rack + Insert	

***Product Available in a Nut Size of 21mm (UK), 22mm (7/8" N. America) and 23mm (AUS)*



SWIVEL ADAPTER CLAMP

The Swivel Adapter Clamp is designed to easily join a scaffold tube to the rosette of a Ringlock Scaffold producing a variety of angles.

SWIVEL ADAPTER CLAMP					
PRODUCT		WEIGHT	PACKAGING		
CODE	DESCRIPTION	KG	QTY	TYPE	
05.02.200.50	Swivel Adapter Clamp	1.60	650	Rack + Insert	

***Product Available in a Nut Size of 21mm (UK), 22mm (7/8" N. America) and 23mm (AUS)*

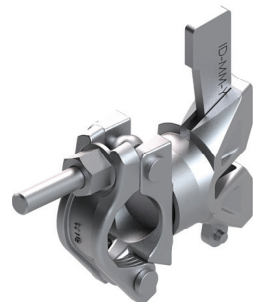


RIGHT ANGLE ADAPTER CLAMP

The Right Angle Adapter Clamp is designed to easily join a scaffold tube directly to the Ringlock standard creating 90 degree angles.

RIGHT ANGLE ADAPTER CLAMP					
PRODUCT		WEIGHT	PACKAGING		
CODE	DESCRIPTION	KG	QTY	TYPE	
05.01.200.50	Right Angle Adapter Clamp	1.56	650	Rack + Insert	

***Product Available in a Nut Size of 21mm (UK), 22mm (7/8" N. America) and 23mm (AUS)*



LEG LOCK (SUSPENDED SCAFFOLD)

The Leg Lock, used in pairs, are designed to attach to the bottom Rosette of the top Standard and to the top Rosette of the bottom Standard. This joins the standards together in preparation for suspended scaffold applications.

LEG LOCK (SUSPENDED SCAFFOLD)					
PRODUCT		HEIGHT	WEIGHT	PACKAGING	
CODE	DESCRIPTION	METRES	KG	QTY	TYPE
01.28.000.00	Leg Lock (Suspended Scaffold)	0.50	3.66	268	Rack



ACCESSORIES

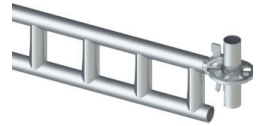
Loading Tower Components

LOADING TOWER TRANSOM O-TYPE

The Loading Tower Transom is designed to support very high loads that act on Loading Towers.

LOADING TOWER TRANSOM O-TYPE					
PRODUCT		LENGTH	WEIGHT	PACKAGING	
CODE	DESCRIPTION	METRES	KG	QTY	TYPE
01.38.307.50	Loading Tower Transom O-Type	3.07	32	55	Rack

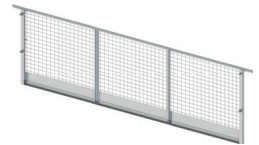
***Loading bay uses 2 of these transoms front and back with a maximum bay size of 3.072 • 2.072*



LOADING TOWER GATE

The Loading Tower Gate is the front of the Loading Bay which is supported using the Loading Tower Lifting Arms.

LOADING TOWER GATE					
PRODUCT		WIDTH	WEIGHT	PACKAGING	
CODE	DESCRIPTION	METRES	KG	QTY	TYPE
01.39.307.50	Loading Tower Gate	3.07	40	20	Rack



LOADING TOWER LIFTING ARM

The Loading Tower Lifting Arms are the supporting structure for the Loading Bay Gate and Rear Guardrail. The arms are attached using the Fulcrum Coupler.

LOADING TOWER LIFTING ARM					
PRODUCT		LENGTH	WEIGHT	PACKAGING	
CODE	DESCRIPTION	METRES	KG	QTY	TYPE
01.40.001.50	Loading Tower Lifting Arm	3.07	22.50	28	Rack
01.40.002.50	Loading Bay Fulcrum Coupler	0.30	3.00	300	Rack

***Product Available in a Nut Size of 21mm (UK), 22mm (N. America) and 23mm (AUS)*



LOADING TOWER REAR GUARDRAIL

The Loading Tower Rear Guardrail connects to the Lifting arms and creates a Guardrail when the Loading Gate is open.

REAR GUARDRAIL					
PRODUCT		LENGTH	WEIGHT	PACKAGING	
CODE	DESCRIPTION	METRES	KG	QTY	TYPE
01.40.003.50	Rear Guardrail	3.07	16.91	23	Rack



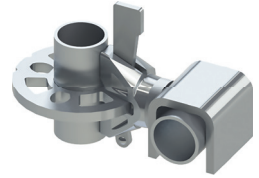
ACCESSORIES

Miscellaneous Items

RETURN LEDGER HOOK

The Return Ledger Hook is designed to connect to the Ringlock Rosette and Hook over anywhere along the length of a Ringlock Ledger.

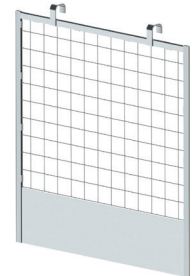
RETURN LEDGER HOOK					
PRODUCT		WEIGHT	PACKAGING		
CODE	DESCRIPTION	KG	QTY	TYPE	
01.41.000.50	Return Ledger Hook	1	950	Rack	



BRICKGUARD PANEL

Brickguard Panels secure to the top Guardrail Ledgers to provide protection from falling debris, the panel has a built in Toeboard.

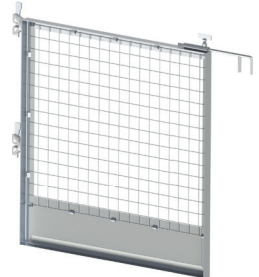
BRICKGUARD PANEL					
PRODUCT		LENGTH	WEIGHT	PACKAGING	
CODE	DESCRIPTION	METRES	KG	QTY	TYPE
01.42.970.50	Brickguard Panel	0.97m	9	14	Rack



RETURN GUARDRAIL FRAME

The Return Guardrail Frame secures to Ringlock Rosettes and Hooks onto Ringlock Ledgers, this is specifically useful when creating flypast return corners or creating edge protection for circular scaffolds.

RETURN GUARDRAIL FRAME					
PRODUCT		RANGE	WEIGHT	PACKAGING	
CODE	DESCRIPTION	METRES	KG	QTY	TYPE
10.05.109.50	Return Guardrail Frame	1.09-1.11	16.5	14	Rack



ACCESSORIES

Pins/Storage

PIG TAIL PIN

The Pig Tail Pin is designed to lock two Standards together to resist uplift.

PIG TAIL PIN					
PRODUCT			WEIGHT	PACKAGING	
CODE	DESCRIPTION		KG	QTY	TYPE
35.02.000.00	Pig Tail Pin		0.11	500	Bag



TOGGLE PIN

The Toggle Locking Pin is designed to lock two Standards together to resist uplift.

TOGGLE PIN					
PRODUCT			WEIGHT	PACKAGING	
CODE	DESCRIPTION		KG	QTY	TYPE
35.03.000.00	Toggle Pin		0.06	1000	Bag



SCAFFOLD RACK

The Scaffold Rack is designed for storage of larger items such as Standards, Ledgers, Steel Plank, etc.

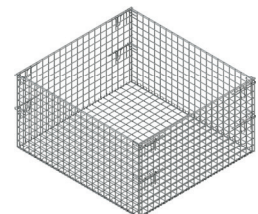
SCAFFOLD RACK					
PRODUCT		HEIGHT/DEPTH	WEIGHT	PACKAGING	
CODE	DESCRIPTION	METRES	KG	QTY	TYPE
99.02.000.00	Scaffold Rack	0.77 x 1.1	45.61	1	Rack



SCAFFOLD CAGE INSERT

The Scaffold Cage Insert is designed to fit into the storage rack, to create the Basket for storage of smaller scaffold items such as clamps and accessories.

SCAFFOLD CAGE INSERT					
PRODUCT		HEIGHT/DEPTH	WEIGHT	PACKAGING	
CODE	DESCRIPTION	METRES	KG	QTY	TYPE
99.01.000.00	Scaffold Cage Insert	0.55 x 1.0	29.96	1	Insert





DISCLAIMER

DISCLAIMER

Whilst AT-PAC and its suppliers have taken every reasonable effort to ensure the information contained within this publication is correct and complete at the time of printing, you should be aware that there will be periodical changes and AT-PAC does not accept any liability for any inconvenience, loss or damage caused as a result of any inaccuracy or omission within this publication.

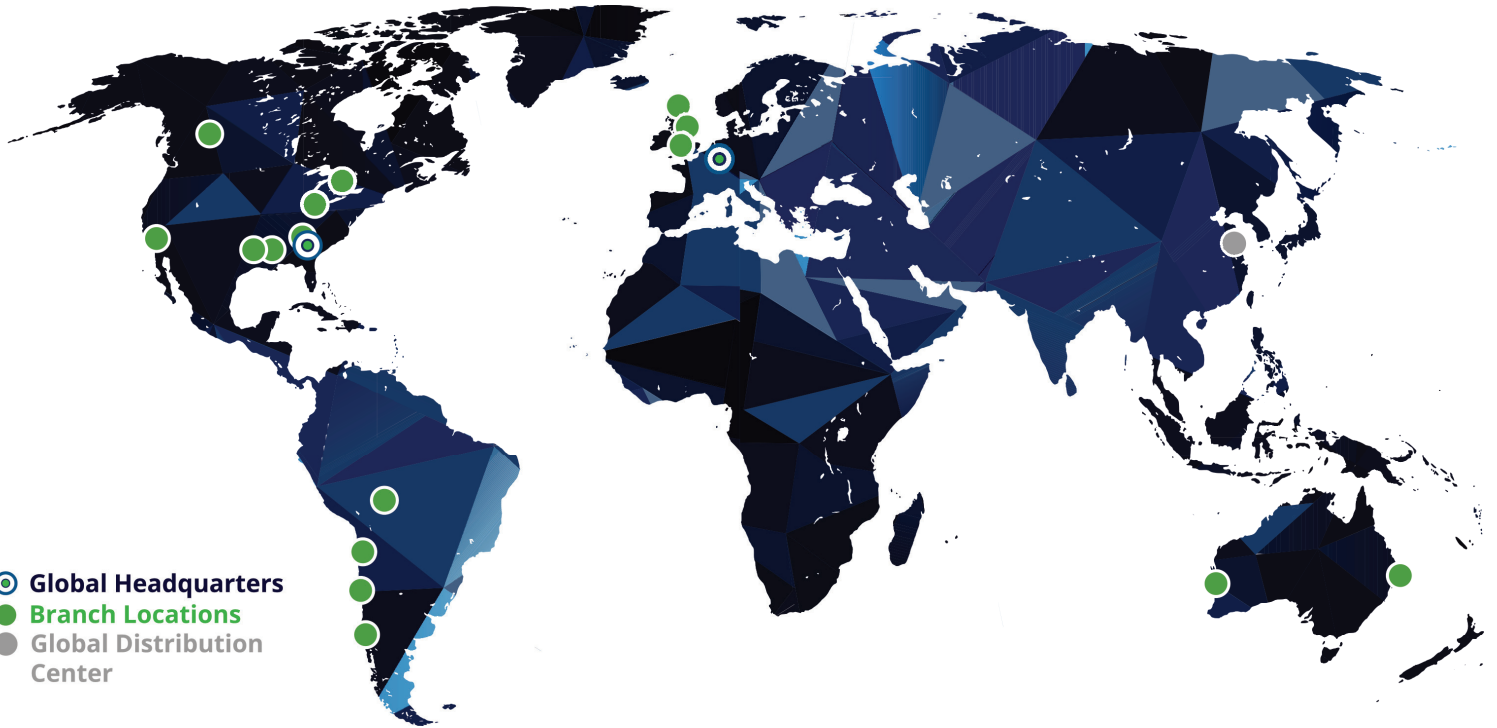
Changes are periodically made to the information herein, and AT-PAC reserves the right to make improvements or changes to the content of this document at any time without notice.

Copyright © 2016 AT-PAC Ltd. All Rights Reserved. info@at-pac.com.



ATPAC

COMPLETE SCAFFOLDING SOLUTIONS



GLOBAL CORPORATE OFFICE:

10904 Crabapple Road | Roswell, GA | 30075 | USA
Main: 678.505.3957 | Fax: 866.720.3307 | General Email: info@at-pac.com

ADDITIONAL LOCATIONS:

GLASGOW

+44 (0)12 3628 0120

LEEDS

+44 (0)19 7767 0510

LONDON

+44 20 8310 3559

BIRMINGHAM

+44 (0)19 0288 2781

Atlanta, GA, USA
Baton Rouge, LA, USA
Houston, TX, USA
Los Angeles, CA, USA
Columbus, OH, USA

Edmonton, AB, Canada
Toronto, ON, Canada
Antofagasta, CL
Concepcion, CL
Santiago, CL

Santa Cruz, BO
Brisbane, QLD AUS
Perth, West AUS